

TOUR CLUB LEISURE GUIDE

**Issue No. 24
2024 - 2025**



**tourclub@baytours.co.nz | 06 845 2736 (ext. 1)
www.baytours.co.nz**

Welcome to Bay Tours & Charters Leisure Guide



Welcome to Edition 24 of our **Leisure Guide**. I'm writing this in the wake of yet another storm event here on the east coast of the North Island. Once again, our people have been displaced and property damaged. On behalf of everyone here at Bay Tours we send out our aroha to any of our members that have been affected. This month – July – our youngest son, Alex, whom those who came on the last Christmas Mystery tour will recall meeting, is off on his O.E. basing himself in

London. This will mean that of our four sons only Callum, who is a winemaker in Central Otago, remains in New Zealand. Still, with the other three living in Utah, New York and London there's certainly the opportunity for Ken and I to reverse the usual parent/offspring hosting responsibilities – Haha! It's been another busy six months since we published the last edition back in December 2023. In February Ken and I led a very successful tour to Tasmania. It was a large group by international tour standards, but everyone got on very well and thoroughly enjoyed themselves. Since returning, requests for a second trip there have grown to the point where we are offering the new and updated **2025 tour to Tasmania** in this Guide. April past was a massive month which saw Ken lead a wonderful tour of *Whanganui River & the Forgotten Highway* and I led a very successful *Capital City & Country Luxury Dining* tour. In fact, April was so busy that we had the rare situation of two tours (*Exploring Blenheim to Christchurch* tour and *Molesworth Station* tour) enjoying dinner together in the same restaurant in Hanmer Springs, of all places. The *Molesworth & Rainbow Station* tour was the first with a new improved itinerary which offered more within the 5 days. It was very well received and we're certainly repeating it. Each new edition of the **Leisure Guide** poses the challenge to be better than the last. In my opinion we've achieved this with perhaps a broader range of both day trips and multi-day tours on offer. Our Winter Island Escape this year is to **Samoa** in September. We're so excited that our aim to create a tour to this serene, spectacular place has come to fruition. Also in the Pacific Islands vein, if cruises are of interest to you, look out for our **Pacific Island Cruise on Celebrity Edge** tour in February 2025. If you want to experience the new generation of cruise luxury, this is for you. Also in February, we have a brand-new tour called **Canterbury Homesteads & Country Gardens** and we're super-excited to be hosted at so many magnificent properties. Look out for another set of dates for our hugely popular **Great Barrier Island** tour in this edition. With our tours to the island in both October and November this year already booked out, the new **March 2025** dates will go fast so don't miss your chance if you've always wanted to visit this mystical place. We return to **Kapiti & Matiu/Somes Islands** in December for the first time in a couple of years and a new destination is added to our multi-day '*Luxury Dining*' series. And on that subject, we're so excited about a whole raft of **local lunches and dinners** on offer in this edition. Some fabulous familiar destinations, the rebirth of a couple of past favourites and some brand-new kids on the block as well. There really is plenty in here for everyone. On behalf of all the Bay Tours family, Ken and I wish you enriching, engaging, and rewarding touring and we look forward to seeing you on a tour with us soon.

Cover Photo (overleaf): Tasmania 2024

Kerren & Ken Withington

General Information

Payments:

Credit card: We accept credit card payments by Visa or MasterCard but there is a 5% credit card handling fee. To avoid incurring this bank cost you can pay by;

Cash or internet banking; Internet banking, please place the **tour number with the first 4 letters of your surname in the reference field e.g. 1014WITH**. If you are paying for more than one tour, please place the other tour number in the code field. If you are paying your patron fee in the same payment, please write PATRON in the particulars field.

This also applies if you visit a Kiwibank branch to make an over-the-counter deposit. You MUST highlight your reference details on your deposit slip to the teller to ensure they key them in for your transaction.

Our bank account number to pay into is: Kiwi Bank 38 9014 0316437 00.

Dietary Requirements:

If you have any dietary requirements, please bring this to our attention when you are booking your trip to enable us to accommodate your needs.

Accommodation Preferences:

If you wish to have a hotel room on a lower level or if you prefer two beds instead of a double, please let us know at the time of booking so we can accommodate your needs.



Mobility Checkpoint:

Some tours which have an aspect to them that will require a specific level of mobility will be flagged with this **RED MAN** sign: This DOESN'T necessarily mean you will be unable to participate. We simply ask that you call the office to discuss the specific requirement.

Kaye & Kayley - Your Tour Club Co-ordinators



All our tours include door to door transport from urban areas in Hawkes Bay. If you live rurally, we can discuss an alternative pick up point. For our members who live in CHB, if the tour is going through your hometown, we can pick you up on the way, otherwise you are welcome to park your car in our yard in Onekawa for the duration of the tour.

Please make sure you note down final payment due dates on your calendar or diary as we do not send payment reminders or invoices. This can be found in the details section of each tour.



Post to:

PO Box 12221, Ahuriri, Napier 4144

Phone us at:

(06) 845 2736 – EXT 1

E-Mail: Tour Co-ordinator Kayley at:

tourclub@baytours.co.nz

Visit us at our address:

26 Turner Place, Onekawa, Napier 4110

Tour Club Booking Form

Date	Tour	Tour Name	Patron	Member
Wed 31 July	731	Lunch at Craggy Range	\$195	\$220
Thu 8 Aug	808	Lunch at The Duke of Edinburgh – Pōrangahau	\$170	\$190
Thu 15 Aug	815	Patrons Lunch to Say Thanks – Jarks	\$55	N/A
Sun 18 – Mon 19 Aug	818	We Will Rock You Musical – Wellington	\$760	\$850
Thu 29 Aug	829	Winter Pub Lunch & Quiz	\$160	\$185
Tue 3 Sep	903	Mystery Country Day Out	\$125	\$165
Fri 6 Sep	906	Lunch at Off The Track	\$130	\$150
Sun 8 – Tue 17 Sep	908	The Tropical Wonders of Samoa	\$5,995	\$6,595
Tue 10 Sep	910	Smedley, Gwavas & Taniwha Daffodils	\$180	\$205
Thu 12 Sep	912	Evening Progressive Dinner	\$170	\$195
Tue 17 Sep	917	A Farmhouse BBQ Lunch	\$145	\$175
Fri 20 Sep	920	Manawatū Gardens & More	\$195	\$215
Thu 26 Sep	926	Fine Dining at Wallingford	\$295	\$335
Fri 27 – Sun 29 Sep	927	A Luxury Weekend at Treetops Estate	\$2,265	\$2,495
Sat 28 – Sun 29 Sep	928	WOW #1 – Wellington	\$735	\$810
Mon 30 Sep	930	Spring Progressive Lunch	\$165	\$185
Sat 5 – Sun 6 Oct	1005	WOW #2 – Wellington	\$735	\$810
Thu 10 Oct	1010	Jersey Boys – Dinner & Show	\$225	\$255
Tue 15 Oct	1015	Lunch at The Brantry Eatery	\$215	\$240
Wed 16 Oct	1016	A Visit to Timahanga Station	\$150	\$175
Thu 17 – Thu 24 Oct	1017	Coromandel Magic	\$4,245	\$4,675
Tue 22 Oct	1022	In Our Own Backyard	\$160	\$185
Thu 24 Oct	1024	Big Day Out- Christmas Barn & More	\$195	\$230
Wed 30 Oct – Sun 3 Nov	1030	Great Barrier Island Escape #1	\$3,630	\$3,995
Wed 30 Oct	1030A	A Visit to the National Army Museum	\$170	\$205
Tue 5 – Sun 10 Nov	1105	Taranaki Garden Festival	\$2,770	\$2,965
Thu 7 Nov	1107	Big Day Out – Orakei Korako	\$225	\$260
Wed 13 – Sun 17 Nov	1113	Great Barrier Island Escape #2	\$3,630	\$3,995
Sat 16 Nov	1116	Cross Hills Gardens Country Fair	\$195	\$225
Tue 19 Nov	1119	A Visit to Waihua Station	\$155	\$180
Thu 21 – Fri 29 Nov	1121	Hidden Gems of the Southern Coast	\$5,895	\$6,475
Tue 26 Nov	1126	Notable Homes of Hawkes Bay	\$200	\$225
Thu 28 Nov	1128	Spring Pub Lunch & Quiz	\$155	\$185
Sat 30 Nov – Mon 2 Dec	1130	Kaimanawa Heritage Horses	\$1,425	\$1,570
Tue 3 – Fri 6 Dec	1203	Kapiti & Matiu/Somes Islands	\$2,225	\$2,485
Thu 5 – Thu 12 Dec	1205	Lodges Of The Marlborough Sounds	\$4,895	\$4,950
Mon 9 Dec	1209	Tukituki Cycle Trail & Lunch	\$185	\$210
Thu 12 Dec	1212	A Day On The Back Country Roads	\$125	\$160
Tue 24 – Sat 28 Dec	1224	Christmas Mystery	\$3,225	\$3,615
Wed 15 – Wed 29 Jan	115	Exploring Tasmania	\$10,595	\$11,655
Thu 16 – Fri 23 Jan	116	Chatham Islands	\$6,585	\$7,250
Fri 31 Jan	131	A Local Guides Us Through Mahia	\$180	\$210
Mon 3 – Wed 5 Feb	203	Taupō Luxury Dining	\$1,875	\$2,155

Thu 6 – Wed 19 Feb	206	A Pacific Island Cruise on Celebrity Edge	\$9,555	\$10,510
Thu 20 Feb	220	Dinner at High St Bistro Dannevirke	\$175	\$210
Mon 24 Feb – Tue 4 Mar	224	Canterbury Homesteads & Gardens	\$3,955	\$4,350
Wed 26 Feb	226	Lake Waikaremoana	\$165	\$195
Sat 1 Mar	301	Martinborough Fair	\$140	\$160
Fri 28 Mar – Tue 1 Apr	328	Great Barrier Island Escape	\$3,785	\$4,165
Mon 7 – Fri 11 Apr	407	Molesworth & Rainbow Stations & More	\$3,365	\$3,720
Mon 7 – Wed 16 Apr	407A	Otago’s Old Gold Road	\$7,755	\$8,595
Fri 23 – Mon 26 May	523	Bluff Oyster & Food Festival	\$2,695	\$2,995
Tue 17 – Mon 23 June	617	TranzAlpine	\$3,955	\$4,355
Tue 15 – Thu 24 Jul	715	A Winter Escape to Rarotonga	\$7,825	\$8,595
Sun 3 – Sun 10 Aug	803	Exploring Fiordland’s Finest	\$10,375	\$11,425

Tour Club

Conditions & Important Booking Information

1. Reservations & Payments

Generally, the price of day trips should be made in one payment, with the exception of those where a deposit is requested in the Leisure Guide.

For all overnight or longer tours, a deposit as stated in the Leisure Guide is payable to secure the booking. The balance must be paid in full by the declared date in the Leisure Guide.

Any customer who has booked a package with Bay Tours shall not assign, purport to assign, or attempt to re-sell the package (whether whole or in part), rights or interests under these Terms without prior consent from Bay Tours.

Any reservation made within six (6) weeks of the tour departure must be paid in full.

2. Medical

Please notify us of significant medical issues when you are considering making a booking so that we can inform you of any potential risks that may present themselves as part of the tour. Bay Tours reserves the right to decline/refuse a booking because of medical concerns.

3. Health & Fitness

At Bay Tours we pride ourselves on giving personal service to our customers. However, our guides are not qualified to provide individuals, who are not of reasonable, able-bodied health, the special time and attention they may need to make their tour a memorable experience. We’re very happy for you to join us if you have a caregiver that can accompany you and provide help to you along the way.

4. Behaviour

Bay Tours & Charters Ltd is not a common carrier and therefore reserves the right to refuse to carry or admit a person whose behaviour is considered detrimental to the enjoyment of the group. By travelling with Bay Tours & Charters Ltd the traveller agrees to accept the authority of Bay Tours staff leading the tour and accept their decisions. Our staff are entitled to a safe working environment and our passengers to a great holiday. Any threats to safety, either physical or verbal, or inappropriate behaviour by a passenger may result in their removal from the tour. If staff require a passenger to leave a tour, no refunds will be given and the passenger will be responsible for their own travel costs from that point.

5. Travel Insurance – ask us for a quote with CoverMore

In association with Cover-More Travel Insurance we now offer to members insurance against unforeseen events which may necessitate you cancelling your travel with Bay Tours. This is part of a comprehensive cover policy. It will secure your refund in the event of you having to withdraw from a booking. **We just need your date of birth in order to provide you with a quote.** There is a \$25 excess, payable for each claimable event.

- Should you decide to make use of this insurance, it must be purchased at the time you make your booking and paid in full with your tour deposit.
- Insurance Terms and Conditions apply and will be attached to your Cover-More Travel Insurance schedule which will be forwarded to you following purchase. Please ensure you take time to read through the policy wording and make yourself familiar with the cover it offers.
- Activation of your Policy by way of claim is between you as the policy holder and Cover-More NZ Ltd.

6. Cancellations and Refunds

With Travel Insurance

Should you be forced to cancel your travel with us due to a claimable unforeseen event, Bay Tours will calculate the level of direct refund we are able to make to you. You then simply complete a Cover-More claim form for the difference between the Bay Tours refund and the amount you paid for the tour. Once approved, Cover-More will reimburse you less the \$25 excess.

Without Travel Insurance

Cancellation fees without Travel Insurance with us are as follows;

Multi-Day Tours

45 Days or more prior to commencement of the tour:

Full refund, less any non-recoverable payments to suppliers of the tour.

44 to 22 Days prior to the commencement of the tour:

100% loss of deposit paid.

21 Days or less prior to the commencement of a tour:

100% loss of tour price paid.

If you cancel at any time, and following discussion with Kaye or Kerren, you are able to get someone to take your place, you will receive a refund of the amount paid, less an admin fee of \$250 and any non-transferable payments to suppliers e.g., flights

We strongly encourage the purchase of Travel Insurance in order to provide peace of mind that the full amount paid is protected (as per Item 4 above).

Day Trips

4 Days or more prior to the Day Trip:

Refund in full

3 Days or less prior to the Day Trip:

No refund

7. Itinerary Variations

Bay Tours & Charters Ltd reserves the right to alter the tour package (including the itinerary) and substitute accommodation facilities and/or activities to those advertised should unforeseen circumstances beyond our control make changes necessary. The company will always endeavour, at their discretion, to select appropriate alternatives.

8. Tour Cancellations

Bay Tours & Charters Ltd reserves the right to cancel or withdraw any tour or any booking made for a traveller. In this event we will refund the total tour price, but will not have any further liability.

9. Liability

Bay Tours & Charters Ltd are not liable for and deny all responsibility for personal injury or property damage arising out of these activities.

The arrangement providers, namely the carriers providing land, sea or air travel, the operators providing transfers, accommodation, tours, meals and other services, all do so according to their conditions. The traveller accepts the arrangements subject to those conditions and accepts that their rights may be limited to those conditions as found in tickets, vouchers, signs, forms, contracts and the like.

The traveller has no right to claim against Bay Tours & Charters Ltd for any loss, damage, delay or injury caused to the traveller or their baggage whilst under the care or control of an arrangement provider. A traveller's baggage and personal effects shall be carried at owner's risk as provided for under the Carriage of Goods Act.

Bay Tours & Charters Ltd is not responsible for any losses or additional expenses due to delays or alterations in air, land or sea travel due to inclement weather, acts of God, strikes, breakdowns, civil unrest, quarantine, or other circumstances beyond its control.

10. International Tours

It is a condition of participation in any of our international tours that New Zealand residents purchase comprehensive travel insurance from the time of booking until the completion of the tour. The insurance must include cover for lost or damaged luggage, accident or sickness, loss or theft of personal belongings and documents and the need to cancel or curtail your holiday. Please note that special conditions apply for pre-existing medical conditions with all travel insurance policies.

You may wish to consider insuring with Cover-More NZ Ltd through Bay Tours. Ask us about it.

The traveller has full responsibility for ensuring they hold a valid passport and all visas, permits and certificates required for the selected tour as well as any necessary vaccinations to comply with applicable regulations.

11. Brochure Pricing

The prices that appear in the Leisure Guide are valid at the time of publication. The Company reserves the right to change pricing at any time after publication should this be forced upon us. Should changes occur you will be notified at the time of booking.

12. Photographs

The photographs reproduced depict typical scenes experienced, but the subject matter may not necessarily be seen or experienced whilst visiting that destination on any given day. Whilst away with Bay Tours you may be included in some photographs and/or video taken by our guides and drivers that will be used for future promotional advertising purposes and by booking on to this tour you authorise the use of any images you are captured in to be used without any further consent or payment.

13. Acknowledgement and Acceptance

In booking a tour with Bay Tours & Charters the participant(s) acknowledge that they have read, understood and accept these conditions.

Bring a Friend Promotion!



If you **introduce a friend to Tour Club** who isn't already on our database, once they take their first trip with us, we will hold a credit for you to use towards any Bay Tours and Charters tour. If their 1st trip is a day trip you will receive a **credit of \$50**. If it's an overnight or longer tour you will receive a **credit of \$100**. Make sure they say that you referred them when they register so we can keep track for you.

Credit amounts effective from Leisure Guide Issue No. 18

Tour No. 731

Lunch at Craggy Range

Date	Wednesday 31 st July
Times	All collected by 11.50am
Cost	Patron: \$195.00 Member: \$220.00
Payment	Full payment upon booking please
Price includes	Door to door transport, 3 course lunch incl a glass of wine



Craggy Range Restaurant has always been one of the finest in Hawke's Bay. Recipient of 2 Hats (NZ's equivalent to Michelin Stars in France) in the most recent Cuisine Magazine Awards, Craggy Range continues to be the standard-bearer for winery restaurants. We're delighted to invite you to join us for a very special lunch at this superb venue. **Head Chef Casey McDonald** will pay homage to perhaps the ultimate Kiwi lunch dish – **Roasted Hawke's Bay Lamb**.

We'll enjoy a magnificent **3 course lunch** centred around Casey's personal version of this iconic centrepiece of family occasions and accompanied by a complimentary glass of Craggy Range wine. This is one of our culinary highlights of the year and perhaps the epitome of supporting local producers. Numbers are strictly limited so book immediately to secure your place at the table.

Tour No. 808

Lunch at The Duke of Edinburgh - Pōrangahau

Date	Thursday 8 th August
Times	All collected by 9.25am
Cost	Patron: \$170.00 Member: \$190.00
Payment	Full payment upon booking please
Price includes	Door to door transport, 3 course lunch

One of the prettiest parts of our region in winter is that area of Central Hawke's Bay between State Highway 2 and the coast. The bare silvery trees look magical against the rolling green hillsides and the shadows cast by the low winter sun into the valleys add another dimension to stunning vistas. It's been a long time since we drove the charming Wanstead road out to **Pōrangahau** and **The Duke of Edinburgh Hotel** for lunch. With the



roaring fire warming us, we'll enjoy **3 courses** of wonderful home cooking and the atmosphere of one of Hawke's Bays iconic country pubs. And if the weather allows, we'll enjoy time to wander on beautiful Pōrangahau Beach. The scenic backroads continue on our return journey through Elsthorpe as we follow the Tuki tuki River valley northwards. Join us for a fabulous winter day out and a classic country lunch.

Tour No. 815

Patrons Lunch To Say Thanks - Jarks

Date	Thursday 15 th August
Times	All collected by 11.45am
Cost	Patron: \$55.00
Payment	Full payment upon booking please
Price includes	Door to door transport, 2 course lunch



Another special 'Patron Only' lunch, this time at the wonderful **Jarks of Hastings**. Join us for a delicious **2-course lunch**. The fire will be roaring and the welcome will be just as warm. Last time Jarks hosted one of these lunches there was a huge turnout so don't miss this one. A great chance for us to say thanks to you and for you to catch up with Tour Club friends.

Tour No. 818

We Will Rock You Musical - Wellington

Date	Sunday 18 th – Monday 19 th August
Times	All collected by 7.45am
Cost	Patron: \$760.00 Twin Share \$860.00 Single Room Member: \$850.00 Twin Share \$945.00 Single Room
Payment	Full payment upon booking
Price includes	Door to door transport, morning tea, accommodation, premium ticket to show, dinner, breakfast

Since its 2002 world premiere in London, 16 million theatregoers in 28 countries have been thrilled by this awe-inspiring musical production based on the songs of Queen with the book by Ben Elton. And now it's Wellington's turn as the musical heads exclusively to the magnificent **St James Theatre**.

Elton has fashioned this hilarious futurist comedy around more than 24 of Queen's biggest hit songs including 'We Are The Champions', 'Radio Ga Ga', 'I Want To Break Free', 'Somebody To Love', 'Killer Queen', 'Don't Stop Me Now', 'Under Pressure', 'Bohemian Rhapsody', 'Another One Bites The Dust' and of course, 'We Will Rock You'.

The musical takes place in a future age on a planet once called Earth that is now controlled by a mighty corporation. Rock music (or any other kind) is never heard and all musical instruments are banned. The hope of breaking free rests with an unlikely resistance - an alliance of rebel Bohemians. The show is live, dangerous and more than anything else: it rocks!

We'll overnight at our favourite **Copthorne Oriental Bay Hotel** and enjoy dinner in the theatre district before the show. With a leisurely start the following morning, come and give in to your inner Rock God(ess) and enjoy an epic performance with guilty pleasure. Brought to you by the producers of the recent Wellington seasons of *WICKED* and *Les Misérables*, this is sure to be the hit of the year!



Tour No. 829

Winter Pub Lunch & Quiz

Date	Thursday 29 th August
Times	All collected by 11.30am
Cost	Patron: \$160.00 Member: \$185.00
Payment	Full payment upon booking please
Price includes	Door to door transport, lunch



This latest edition of our popular series will see us return to the warm hospitality of Aaron & Rhonda Bartlett at the **Patangata Tavern**. It's always a picturesque drive out there. Remember, this is a team event with each table forming a team to participate in the **Pub Quiz** through the **2 course Lunch**. The format is pretty simple. There will be 8 rounds of questions arranged around the lunch courses with each round having a broad category such as 'Geography' or 'Television & Movies'. Peter, our Quizmaster, will ask 10 questions in each round and each team writes down their answers on the sheet provided. Ken collects each team's completed answer sheet

at the end of the round and replaces it with a blank sheet for the next round whilst Kerren tallies the scores. Every few rounds Peter will read out the correct answers for the rounds just gone and Kerren will update us on the team scores so that everyone has an idea of how they're going. It's huge fun and everyone contributes something to their team at some stage. Prizes and prestige for the winners are up for grabs and there's also spot prizes so everyone's in with a chance.

Join us for a great lunch and lots of laughs as the teams battle it out to be **Bay Tours Pub Quiz Champions**.

Tour No. 903

Mystery Country Day Out

Date	Tuesday 3 rd September
Times	All collected by 9.15am
Cost	Patron Special : \$125.00 Member: \$165.00
Payment	Full payment upon booking please
Price includes	Door to door transport, morning tea, lunch

It's more than two years since our last Mystery Day Out. And well, not much else to be said about this one. The clue is in the title. Although it's not an entire mystery, we can tell you that it takes place, err, during the day...and that you'll be, um, 'out', whatever that means. Other than that, our lips are sealed. But be warned, these are very popular. Must be the way we talk them up! Come find out for yourself.



Tour No. 906

Lunch at Off The Track

Date	Friday 6 th September
Times	All collected by 12pm
Cost	Patron: \$130.00 Member: \$150.00
Payment	Full payment upon booking please
Price includes	Door to door transport, 3 course lunch



Following the devastating fire in July 2023 that closed ever-popular **Off The Track** restaurant, on the outskirts of Havelock North, the relatively new owners wondered if they'd ever get their space back together. Re-construction of the restaurant would take a while, they were told. Then a brilliant idea – open a 'pop-up' eatery in the Heretaunga St space in Hastings formally occupied by the wonderful Cornucopia Café. This temporary change in venue and food style worked a treat.

But now the main event is ready to re-open. So as part of our 'Support Local' philosophy we invite you to join us at the shiny new **Off The Track** restaurant, back at their original venue on Havelock Road, for a **3-course lunch** to celebrate another Hawke's Bay business survival story. We can't wait to see how the new place looks and feels.

Tour No. 908

The Tropical Wonders of Samoa

Date	Sunday 8 th – Tuesday 17 th September
Times	All collected by 1.15pm
Cost	Patron: \$5,995.00 Twin Share \$7,540.00 Single Room Member: \$6,595.00 Twin Share \$8,295.00 Single Room
Payment	\$500.00 upon booking, balance due Tuesday 25 th June
Price includes	Door to door transport, flights, accommodation x9, dinner x8, breakfast x9, lunch x2

As the cold continues to bite, Bay Tour's antidote to the trials of winter will take us where we've never taken a group before. Sometimes referred to as '*The Treasured Islands*', our destination is the beating heart of Polynesia – **Samoa**.

Serene but spirited, wild yet well-manicured, hushed but born of volcanic eruption, stunning **Samoa** is a paradoxical paradise.

Comprising two main islands surrounded by numerous smaller islands, **Samoa** sits like a treasured jewel of unparalleled natural riches with iridescent seas, jade jungles and crystal waterfalls. This humble place, devoid of mega-resorts and flashy attractions, awaits us with a welcome as warm as the island sun.

Our **7 Night** stay will comprise a wonderful mixture of discovery and decompression. Be awed at the natural beauty and surprising history of this place. And yet enjoy the



unhurried, unpressured atmosphere of a genuine South Pacific wonderland, with plenty of time to simply kick back and relax.

Day 1: We have a leisurely afternoon start to the tour as we take an afternoon flight to Auckland for our overnight stay at **Novotel Auckland Airport Hotel**. Ready for our early morning airport check-in – literally just across the road – tomorrow.



Day 2: Our morning flight to Samoa’s capital, **Apia**, sees us arrive in the early afternoon of the same day. Then we settle into our Oceanview Rooms at our home-away-from-home, the stunning **Taumeasina Island Resort**, joined to the main island of Upolu by a causeway and only a 10-minute drive from the capital, **Apia**.

Day 3: This morning we meet Tai, our main guide around this island of Upolu during our stay. Tai is a Samoan High Chief and will help us orientate ourselves to Apia with a guided tour of the town’s landmarks, markets and traditional Cultural Village centre. We’ll also visit **Villa Vailima**, the home of renowned Scottish writer Robert Louis Stevenson.

Day 4: The day is **FREE TIME** for you to settle in and explore the resort. Enjoy swimming in the tropical waters of the reef-protected lagoon and utilize the complimentary snorkeling gear, kayaks and catamarans. Relax on the balcony of your room or by one of the resorts’ two pools with a cool something to sip on. You’ll never go hungry with all-day restaurant or poolside dining available. Tonight, we join Tai and head into the farming countryside for a barbeque dinner hosted by a local farmer and his family.

Day 5: Today we go exploring the natural wonders on the eastern side of the main Upolu Island we’re on. Samoa is famous throughout the Pacific for its spectacular waterfalls and we’ll cross over the **Le Mafa** mountain pass to visit one of the finest, **Sopoaga**. Over roads bordered by tropical jungle, we’ll drive to a natural wonder that’s one of the most iconic images of Samoa, the truly awesome **To Sua Ocean Trench**. We’ll have lunch at magnificent **Lalomanu Beach** – regularly listed by Lonely Planet Travel Guides amongst the *Top 100 Beaches In The World*. Tonight we dine in Apia at the elegant colonial **Lava Hotel**.

Day 6: No time spent in Samoa is complete without a visit to one of the smaller outer islands. Today we’ll visit beautiful **Manono Island** where our island hosts will show us around this very traditional Samoan community. In years gone by, this was where the highest chiefs lived. **Manono** is completely surrounded by coral reef and the colours of the crystal-clear waters are stunning. There are no vehicles, no noise and no dogs. We’ll enjoy a traditional Umu lunch with the residents before making our way back to **Upolu** in the afternoon.



Day 7: This morning we’re hosted at a plantation where various tropical fruits are commercially grown. Our hosts will explain and demonstrate some of the many uses the humble coconut is put to in Samoa and we’ll taste some of the fruit and preserves they produce. This afternoon you are free to relax back at the resort before we attend a traditional **Fiafia evening** filled with traditional dance and song and feasting.

Day 8: As today is Sunday there will be the option to visit the magnificent **Catholic Cathedral** in Apia for an English language church service. The splendid sight of the locals

in their best Sunday whites will live long in the memory. Alternatively, the morning is yours to relax before we all come together for a traditional **To'onai Lunch** in the early afternoon.

Day 9: This morning we have a leisurely start to our day before we must say farewell to our hosts and the beautiful people of **Samoa** as we head to the airport for our flight back to Auckland later in the afternoon. We overnight back in **Auckland** tonight.

Day 10: A late checkout at our hotel allows a sleep in before we head to Auckland Domestic Terminal for our flight home to Hawke's Bay around the middle of the day.

With plenty of interaction with locals and expert guidance throughout, coupled with stunning tropical warmth & beaches, this tour promises to enrich the mind, body and soul. This hugely impressive, yet unpolished place awaits us, along with its dignified, humble people whose grace and passion show in everything they do. Samoa is serene, spectacular and very, very special.

For more information and a detailed itinerary contact Kaye or Kerren here at Bay Tours on 06 845 2736 ext 1 or email Support@baytours.co.nz

Tour No. 910 Smedley, Gwavas & Taniwha Daffodils

Date	Tuesday 10 th September
Times	All collected by 9.10am
Cost	Patron: \$180.00 Member: \$205.00
Payment	Full payment upon booking please
Price includes	Door to door transport, morning tea, lunch, bunch of daffodils



This day out combines three of our most popular springtime destinations. The day centers around one of the great drives through Hawke's Bay, especially in Spring. **State Highway 50** runs through the Maraekakaho, Tikokino and Ashley Clinton districts.

Our first destination is **Smedley Station & Cadet Training Farm** at the base of the Ruahine Ranges. Legendary for the quality of its graduates,

Smedley is an agricultural training farm of nearly 14,000 acres that winters nearly 30,000 head of stock. Each year they select 13 new entrants into the 2-year cadet course. And such is the reputation of Smedley, that upon graduation participants are in very high demand in the industry. Station Manager, and Smedley graduate, Rob Evans and his wife Jen will host us. They'll tell us about the latest happenings at the station and show us around. Then we return to SH50 and head to one of Hawke's Bay's most historically significant properties – **Gwavas Homestead & Garden**. Since the middle of the 19th century, five generations of the Carlyon family have lived and worked at Gwavas. Today Phyllida and Stuart will be our hosts and show us around the magnificent woodland garden that Gwavas is internationally renowned for before we join them for lunch in the grand Victorian homestead. After lunch we continue down SH50 to **Taniwha Daffodils** where the Mabin family have, for 25 years, planted their 20-acre home paddock with daffodils and raised funds for local charities. We can all pick a bunch of 'daffs' to take home.

This is always a wonderful day out full of typical CHB hospitality and a tangible connection at each destination to the region's history. Come and join us in CHB for Spring.

Tour No. 912

Evening Progressive Dinner

Date	Thursday 12 th September
Times	All collected by 6pm
Cost	Patron: \$170.00 Member: \$195.00
Payment	Full payment upon booking please
Price includes	Door to door transport, 3 course dinner

Once again, we've expanded our ever-popular Progressive Lunch concept into the evening. It's simple, a **3-course dinner** with each course at a different restaurant. And where better to begin than the elegant surroundings of **Mangapapa Boutique Hotel** outside Havelock North. The **Entrée** here will reflect their '*Paddock to Plate*' philosophy and is bound to be something stunning and exciting. From here we'll carry



on into the centre of Havelock North to **Malo** restaurant. Long time Head Chef, Bert van de Steeg, has a style that creates elevated flavours from simple quality ingredients with a focus on local produce. His **Main** course creation for us is bound to impress. Then it's off to Hastings and the comfortable fire-side surroundings of **Jarks** for our **Dessert**. Classic winter puddings are their thing and what a great way to round out a memorable evening's dining. Come and join us for dinner with a difference.

Tour No. 917

A Farmhouse BBQ Lunch

Date	Tuesday 17 th September
Times	All collected by 10am
Cost	Patron: \$145.00 Member: \$175.00
Payment	Full payment upon booking please
Price includes	Door to door transport, 2 course lunch



It's been a couple of years since we last visited our friends Greg and Rachel Hart at **Māngārara Station**. Bay Tours have been regular visitors to their 1,500 acre hill country farm at Elsthorpe over the years. Their stunning **Eco-Lodge**, clad entirely in macrocarpa milled on the property, looks across **Horseshoe Lake & Wetland** that borders the farm and is the venue for today's barbeque lunch. Featuring their own beef, pork and lamb grown right there on their farm, their lunches

are always delicious and abundant. Having enjoyed their superb fare and hospitality, there may be an opportunity to buy their meat and free-range eggs to take home.

After lunch we'll head further on to **Kairakau Beach** to enjoy this stunning stretch of sandy coastline before turning homeward and enjoying the scenery along the **Kahuranaki** road east of the Tukituki River. This is a day out that takes us to the very heart (or should that be 'Hart') of what we love about Hawke's Bay.

Quality people producing quality food in a quality environment. Not to be missed!

Tour No. 920

Manawatū Gardens & More

Date	Friday 20 th September
Times	All collected by 7.45am
Cost	Patron: \$195.00 Member: \$215.00
Payment	Full payment upon booking please
Price includes	Door to door transport, morning tea, garden tour x2, lunch, afternoon tea

The Manawatū region has long been an area well known for its gardens. Early colonial settlement, multi-generational family properties, and favourable soils and climate have all contributed to the evolution of many stunning gardens in the area. This is the first of a number of day trips we propose taking, over the next 12 months, to visit some of these gardens. On this day we visit two very different properties. Caroline Van der Haas and her partner Eddy moved to their Aokautere property, tucked in between Palmerston



North city and the Manawatū Gorge, nearly 40 years ago. The 100yo homestead was dilapidated and surrounded by grazing sheep. In the years since, they have not only developed the beautiful gardens and restored the homestead, but built up a home interiors business and recently opened '*Design & Desire*', a space displaying a fabulous collection of light fittings, furnishings and furniture, on the property. They'll introduce us to what the locals know simply as '**Caroline's Garden**' and we'll enjoy lunch here as well. Our second destination is a 120yo property, these days hidden away amongst the modern buildings of the Massey University campus. Historic '**Wharerata**' has very strong connections to Hawke's Bay. In 1900 Arthur Russell, brother of Andrew Russell of '*Tunanui*' and a prominent sheep farmer at Ashurst, and his wife Ethel (nee Williams from Te Aute)

commissioned architect C.T. Natusch of Napier to design them a house for their retirement in Palmerston North. Upon Mrs Russell's death in 1951, the property was taken over by the neighbouring Massey Agricultural College and has been maintained by the university ever since. The university heritage staff will host us and tell us all about the property, show us around the restored homestead and we'll enjoy a cuppa with them before looking around the beautifully maintained garden.



This promises to be a wonderful day looking at two very different properties - some of the less explored jewels of Manawatū.

Tour No. 926

Fine Dining at Wallingford

Date	Thursday 26 th September
Times	All collected by 10am
Cost	Patron: \$295.00 Member: \$335.00
Payment	Full payment upon booking please
Price includes	Door to door transport, lunch

It's over three years since we last visited wonderful **Wallingford** south of Waipukurau. One of the great houses of Hawke's Bay, Wallingford homestead was the centre of a farming enterprise that was established by John Davies Ormond in the 1850s. Over the years the block was divided among family members and when the fourth J.D. Ormond, known as Johnny, died in 2017 it was purchased by Gareth Dunkerley who had played at Wallingford as a child. Gareth has converted the sprawling house and grounds into a luxury retreat with award-winning Sydney restaurateur **Chris Stockdale** as Executive Chef. Chris grew up in Eketāhuna and has returned home to NZ with his business & life partner, Jeanette. They are now working their magic at **Wallingford**, and we will join them for an afternoon of fine food and exploring this impressive property. Enjoy a complimentary drink on arrival as we relax in the lounge before lunch and hear more about the history of the property. A superb **3 course lunch** follows with Chris creating dishes especially for our visit. An opportunity to visit this historic private haven at any time is rare. And the chance to see it in its spring splendor and to experience a Chris Stockdale culinary tour-de-force, even rarer. Treat yourself to a day to remember with fine dining in gracious, glorious surroundings.



Tour No. 928 & 1005

WOW #1 & #2 - Wellington

Date	Saturday 28 th – Sunday 29 th September & Saturday 5 th – Sunday 6 th October
Times	All collected by 8.45am
Cost	Patron: \$735.00 Twin Share \$895.00 Single Room Member: \$810.00 Twin Share \$965.00 Single Room
Payment	Full payment upon booking please
Price includes	Door to door transport, accommodation, breakfast, morning tea, dinner, premium ticket to show



What can we say about the **World of Wearable Art** show that hasn't already been said? It is simply this, a truly world-class exhibition show, created entirely in and by New Zealanders, which combines theatre, music, dance and even circus to showcase stunning pieces of 'art-to-be-worn' by designers from around the world.

Bay Tours have been securing premium viewing seats and taking local Hawke's Bay people to the show in Wellington for years now. Get together with friends or make new ones on the journey to this experience that will dazzle the senses.

Tour No. 930

Spring Progressive Lunch

Date	Monday 30 th September
Times	All collected by 11.15am
Cost	Patron: \$165.00 Member: \$185.00
Payment	Full payment upon booking please
Price includes	Door to door transport, 3 course lunch



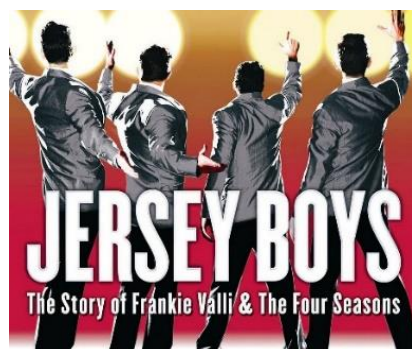
This latest edition of our hugely popular lunch series is entitled 'Return of the Titans' as it features two restaurants that are back after having been closed for some time and a third which is one of our all-time favourites. First up we head to the newly re-opened restaurant at **Elephant Hill** winery at Te Āwanga. Closed to A la Carte dining since the Covid lockdowns of 2020, we are delighted to be able to enjoy our **Entrée** at a restaurant with one of the greatest vistas in all of Hawke's Bay. Next, we head to the outskirts of Havelock North and another re-opened favourite – **Off The Track**. Following a fire in July 2023 that caused extensive damage, a year later this perennially popular restaurant has re-launched, and we want to show our support by having our **Main** course here. We're excited to see the new fit out and taste from the new menu. And for **Dessert** we're off to one of the best sweet treat restaurants around, **Market St** in.....well, Market Street, Napier. Come and celebrate these three awesome venues with us.

Tour No. 1010

Jersey Boys – Dinner & Show

Date	Thursday 10 th October
Times	All collected by 5.15pm
Cost	Patron: \$225.00 Member: \$255.00
Payment	Full payment upon booking please (ticket cost is non-refundable)
Price includes	Door to door transport, dinner, premium ticket to show

Bay Tours are delighted to invite you to experience another awesome production by our friends at **Napier Operatic Society**. After the runaway success of *Fiddler On The Roof* earlier this year, we can't wait to see **JERSEY BOYS** performed at Napier's **Municipal Theatre**. From the mean streets of New Jersey to American Bandstand, this is the thrilling story of four young men from the wrong side of the tracks who became the biggest doo-wop sensation of all time: **The Four Seasons**. Winner of Best Musical at both the Tony Awards® and Olivier Awards®, **JERSEY BOYS** takes you behind the music of **Frankie Valli** and **The Four Seasons** to discover the secret of a 40-year friendship. Chart-topping hits include "Sherry", "Big Girls Don't Cry", "Can't Take My Eyes Off You", "Walk Like A Man", and "My Eyes Adored You" which brought **The Four Seasons** the highest honour: induction into the Rock 'n' Roll Hall of Fame. We'll enjoy dinner at **Shed 2** in Ahuriri before the show and premium seats in the theatre, as always. This promises to be toe-tappin', finger-snappin' entertainment at its best. Book your seat now!



Tour No. 1015

Lunch at The Brantry Eatery

Date	Tuesday 15 th October
Times	All collected by 9.30am
Cost	Patron: \$215.00 Member: \$240.00
Payment	Full payment upon booking please
Price includes	Door to door transport, 3 course lunch, 1x beverage



For many years the secret of superb dining in Taupō that only the locals know about has been **The Brantry**. Set in a character house quietly tucked away in a suburban street, **The Brantry** is one of those places you needn't bother wandering along to without a booking, because you'll be disappointed. It's often booked out weeks in advance. Such is the local support for this wonderful restaurant. Run by renowned local sisters

Prue & Felicity Campbell, who ensure their award-winning eatery maintains the highest standards of cuisine and service, **The Brantry** is a culinary destination everyone should try to make pilgrimage to at least once in their lives. Here's your chance, come with us.

Tour No. 1016

A Visit to Timahanga Station

Date	Wednesday 16 th October
Times	All collected by 9.20am
Cost	Patron: \$150.00 Member: \$175.00
Payment	Full payment upon booking please
Price includes	Door to door transport, morning tea, lunch

Established in the first wave of pastoral land purchases in the 1850s, **Timahanga Station**, off the Taihape Road, has been in Alan Roberts' family for 3 generations.

On nearly 27,000 acres, **Timahanga Station** shears 28,000 Corriedale sheep and carries over 1,000 Angus/Hereford cross cattle and is one of the last remaining 'big farms' in the Hawke's Bay region.



Alan and his family will be our hosts and during the three years since our last visit we've had plenty of requests to return to **Timahanga** once again.

So, join us as we travel over 'The Annie' to enjoy a day in the high country with picturesque river and mountain views around every turn on a farm where scale still matters.

Tour No. 1017 Coromandel Magic

Date	Thursday 17 th – Thursday 24 th October
Times	All collected by 7.15am
Cost	Patron: \$4,245.00 Twin Share \$5,135.00 Single Room Member: \$4,675.00 Twin Share \$5,650.00 Single Room
Payment	\$1000.00 upon booking, balance due by Friday 30 th August
Price includes	Door to door transport, accommodation x7, breakfast x7, morning tea x3, lunch x7, dinner x7



With its pristine beaches, misty forests and laid-back atmosphere, the **Coromandel Peninsula** evokes the feel of easy living and slightly other-worldly mystery. Containing some of New Zealand's most beautiful scenery, from deserted beaches with barely a footprint in sight, to awesome mountains and native bush ringing with birdsong, this region is packed into a narrow strip of peninsula leading ultimately to the warm, balmy breezes of the Hauraki Gulf. We'll explore beyond the

commonly beaten track whilst still enjoying the destinations and activities for which this precious paradise is so beloved. Here's a brief indication of the itinerary highlights;

Day 1: We leave home and head north towards the Bay Of Plenty, stopping at beautiful **Papamoa Beach** for lunch on the way to our overnight stop in **Tauranga**.

Day 2: Today we get our first taste of that special **Coromandel** vibe as we drive up the peninsula's east coast stopping to enjoy the golden sands of **Whangamatā** and **Hot Water Beach**. After lunch we visit our friends at **Cathedral Cove Macadamias** and enjoy the fruits of their efforts, before continuing on to our accommodation in the popular seaside town of **Whitianga**.

Day 3: This morning we take to the water and cruise the peninsula's east coast with sights such as **Orua Sea Cave**, **Cathedral Cove** itself (only accessible by sea) and a number of spectacular blowholes. This afternoon we indulge ourselves with a soak in the legendary, and magnificent, **Lost Spring**.



Day 4: We leave Whitianga this morning and cross the peninsula to the west. With first a stop at stunning **Whangapoua Beach** before a complete change of scenery as we arrive into **Coromandel** town itself for lunch. Afterwards we head into the hills along 'The 309 Road' with waterfalls, Kauri groves and possibly even a piglet encounter in our sights, before arriving at our accommodation back in the town.

Day 5: Today our first stop is the wonderful mountain railway built into the bush by the renowned potter, the late Barry Brickell. This amazing rail journey zig zags up to the 'Eyeful Tower' lookout with views right across the **Firth of Thames** to the Hunua Ranges on the other side. Then we head northeast, crossing the peninsula again, through **Kennedy Bay** and **Tuateawa** to remote and sheltered **Little Bay** for a picnic lunch and wander on the untouched beach. We loop over to **Colville**, back on the west coast where we find ourselves in Hereford country. We'll enjoy an ice cream and pick up some supplies

at the *Hereford 'n' a Pickle Café* before following the Pohutukawa-laden west coast back to **Coromandel** for the night.

Day 6: The direction is south today and the regions largest town, **Thames**. After a morning cuppa and a tour of the stunning **Rapaura Watergardens**, it's into town and a truly unique destination. **'The Aviator'** is our lunch venue with a difference. This year marks the 80th anniversary of the D-Day landings of WWII. And today, right in the middle of Thames, you'll get the chance to pilot a Spitfire over the fields and towns of France without even leaving town. Intrigued? Well, buckle in and prepare to be amazed! This afternoon we'll visit a working 19th century gold stamper battery and learn about the history of gold mining on The Coromandel. Continuing south across the **Hauraki Plains** we spend tonight in beautiful **Cambridge**.



Day 7: Beginning our journey homeward, we stop at **Mamaku Blue**, the country's biggest producer of mega-healthy blueberry juice – and you'll enjoy possibly the best blueberry muffin you've ever tasted. A visit to the **National Bird Of Prey Centre** to experience the live *'Flight Of The Falcon'* and a rail journey with a difference rounds out our day in the Mamaku Valley before we continue on to **Rotorua** for our final night of the tour.

Day 8: After the heartiest of breakfasts, we continue our journey back to the Bay, stopping for lunch, and plenty of time to wander, in **Taupō** on the way.

Largely hidden from international visitors, because of its isolation, and so reminiscent of times past, 'The Coromandel' remains as it always has for Kiwis. A part of our country retaining its unique qualities and relaxed, simple pleasures where you can connect with the natural world and enjoy a slower pace. Come with us and discover a little of the magic of this incredible region. Please Note: The same logistical limitations that keep the heaps of international tourists away mean this tour is limited in its size. Don't miss out on booking your place.

Tour No. 1022 In Our Own Backyard

Date	Tuesday 22 nd October
Times	All collected by 8.15am
Cost	Patron: \$160.00 Member: \$185.00
Payment	Full payment upon booking please
Price includes	Door to door transport, morning tea, lunch

We have a real treat in store today as we visit two recently completed pieces of major public construction in Hastings and then visit the subject of a recent episode of *'Country Calendar'* (2024, Episode 15).

The **Toitoti Hawke's Bay Arts & Event Centre**, to use its full name, is the recently completed major renovation of what was formally the Hastings Opera House and the Municipal Building next door. Not only has the area



around the main auditorium and other performance spaces been upgraded, but the service alleys and backrooms have been linked up and re-configured to create new spaces welcoming new tenants. Our guided behind-the-scenes tour will take us backstage in the

main **Opera House** auditorium and through into the new laneways and old council meeting rooms and the grand Assembly Room of the **Municipal Building** as well, concluding with a cuppa from **Long Island Deli**. From here we head just one block over to the new **Waiaroha Water Discovery Centre**. Here we'll have a guided tour of the



centre which tells the story of Hawke's Bay's water use '*From the Mountains to the Sea*'.

After lunch, with thoughts of our natural resources front of mind, we leave Hastings and head out into the Tukituki Valley to **Matangi Station** where Jamie Gaddum and his wife Nicky are breeding and finishing Angus cattle and bringing a new approach to how the farm is run. They market the meat from their operation themselves as **Matangi Angus Beef** and have their own butchers, a shop in Hastings and offer online purchasing as well. We'll learn about what's different about this farm before taking a look at the actual butcher shop as well.

This is a superb day experiencing some of what's going on in our own backyard.

Tour No. 1024

Big Day Out – Christmas Barn & More

Date	Thursday 24 th October
Times	All collected by 7.30am
Cost	Patron Special: \$195.00 Member: \$230.00
Payment	Full payment upon booking please
Price includes	Door to door transport, morning tea, lunch

In 2024 we're once again offering the opportunity to enjoy a visit to a Christmas shop with a difference. In Kairanga, outside Palmerston North, is **The Christmas Barn**. As the name suggests, a rural barn has been transformed into a magical treasure trove of gifts and decorations including over 20 individually themed decorated Christmas trees. But before all this, we visit **Villa Candotti** - a little piece of Tuscany hidden away in Colyton - for a garden tour with the owner before we have lunch at **The Herb Garden Cafe**. Then it's '*Jingle all the way*' to **The Christmas Barn**.

With one-off items sourced exclusively for them, there's inspiration and imagination aplenty. We'll meet the owners who will talk about the barn's transformation and there'll be plenty of time to pick up the odd Christmas gift or that special, unique Christmas decoration for you to add to the family tree. This will be a day out with a difference. Be the envy of your friends with something a little different at Christmas this year. Join us for a wonderful day.



Tour No. I030A

A Visit to the National Army Museum

Date	Wednesday 30 th October
Times	All collected by 8.50am
Cost	Patron Special: \$170.00 Member: \$205.00
Payment	Full payment upon booking please
Price includes	Door to door transport, morning tea, lunch, museum entry



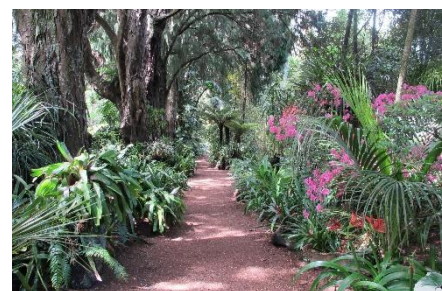
It's been a couple of years since our last day trip to visit our National Army Museum at **Waiouru**. It has housed the memorabilia of our military history since it opened in 1978. It's an amazing collection, superbly displayed to tell our stories. You're in for a wonderful day which starts with a drive over the 'Gentle Annie', stopping beforehand at **Kuripapango** for a cuppa. A delicious lunch on our arrival at the museum in the **Mess Tent Cafe** is followed by plenty of time to wander the museum itself. Our return journey on the same road always provides such stunning vistas. This is a fabulous day out visiting a very special place.

Tour No. I105

Taranaki Garden Festival

Date	Tuesday 5 th – Sunday 10 th November
Times	All collected by 8.30am
Cost	Patron: \$2,770.00 Twin Share \$3,335.00 Single Room Member: \$2,965.00 Twin Share \$3,510.00 Single Room
Payment	\$750.00 upon booking, balance due by Tuesday 10 th September
Price includes	Door to door transport, accommodation x5, breakfast x5, dinner x5, lunch x6, all garden entry fees

Every year, at the end of October, the eyes of New Zealand's gardening enthusiasts turn to the annual **Taranaki Garden Festival**. A collection of gardens, both public and private, are selected to be viewed by visitors from around the country and further afield. The selection of gardens won't be available until after we go to print, but rest assured we'll be incorporating the very best into our itinerary, and with **4 days** to visit these gardens, we won't be rushed. You may even like to have a day off garden visits, it's entirely your choice. Once again, we'll be staying at the wonderful **Devon Hotel** and, as always, we can't wait to again experience the hospitality from Peter and his team. Oh, and as an added bonus, we will call in to say "Hello!" to Richard & Vicki Rowe at magnificent **Merchiston**, near Marton, on our way home. Five generations of Richard's family have lived there and we'll have a tour of the truly stunning homestead (designed by Christchurch architect J.C. Maddison of Mona Vale fame) which was built in 1906, and a wander around the stunning gardens.



Don't miss an opportunity to spend a few days amongst some of this country's finest gardens as well as enjoying springtime in the beautiful Taranaki.

Tour No. 1107

Big Day Out – Orakei Korako

Date	Thursday 7 th November
Times	All collected by 7.30am
Cost	Patron: \$225.00 Member: \$260.00
Payment	Full payment upon booking please
Price includes	Door to door transport, morning tea, lunch

In the second of our **Big Day Out** series we're heading to the spectacular **Orakei Korako Geothermal Park** a little north of Taupo. This hidden valley not only contains some of the largest and most amazing silica terraces in the world, but also boasts the most active geysers of any geothermal park in New Zealand. Up to 23 natural geysers play freely through the area, which is constantly changing. We'll marvel at the vibrant colours all around



us and have the option to take a native bush walk through the untouched geothermal paradise. After a morning cuppa on the shores of Lake Taupo, we'll arrive at **Orakei Korako** around midday. After lunch in the Mudcake Café you're free to explore the park by taking the short ferry ride across the lake from the Visitor Centre. The boats don't run to a timetable. You simply summons one on either side by pushing a button. This gives each person the flexibility to wander for as long or as little as they feel like.

Before we head home, we'll stop in at **Huka Honey Hive** at Wairakei for a look around.

Orakei Korako is often overlooked when people think of geothermal experiences but this hidden valley is simply stunning. Come and join us for a special day.

Tour No. 1116

Cross Hills Gardens Country Fair

Date	Saturday 16 th November
Times	All collected by 7.20am
Cost	Patron: \$195.00 Member: \$225.00
Payment	Full payment upon booking please
Price includes	Door to door transport, morning tea, lunch, garden & fair entry



It has been a very long time since we went to **Cross Hills Gardens Country Fair**. Just north of Kimbolton in the Rangitikei district is a garden whose reputation has spread far and wide. **Cross Hills** has developed into not only a sequence of themed gardens, but also a renowned nursery – all set over 18 acres. Still in the Wilson family and now run by the second and third generations, **Cross Hills** remains a magnificent destination guaranteed to excite all the visitors' senses. And each November more

than 200 artists, makers, creators and growers travel from all corners of New Zealand to be part of a pre-Christmas fair like no other. With delicious food and live music all adding to the fun-filled atmosphere, **Cross Hills Garden Country Fair** is a day to experience one of the great gardens of the Manawatū/Rangitikei area and pick up a few special Christmas gifts as well. Don't miss this 'Mother' of all country fairs. Book your seat now.

Bay Tours invites you to become a

Patron Member

We invite all members to consider becoming a **Patron Member** which, for the payment of a modest annual subscription of \$49pp, or \$85 for couples, will give you access to specially discounted prices on each and every Trip and Tour you book. The more you travel with us, the more you'll save.

Becoming a **Patron Member** will also gain you access to exclusive offers of heavily discounted Patron Only Lunches at various restaurants and cafes throughout the year. You'll see one of these listed in this Leisure Guide.

And if these opportunities weren't enough reason to join, there's more...

We've partnered with a number of prominent retail and hospitality outlets who will grant you exclusive discounts when you present your **Patron Member** Card in their establishment (See more about this on the next page).

So, to summarise, here's why becoming a **Patron Member** makes sense;

- A discounted price on every Trip and Tour we offer.
- Access to Patron Only Lunches through the year at specially discounted prices.
- Special discounts at partner retail and hospitality establishments.
- All this for a modest inaugural subscription of \$49pp or \$85 for couples.

Invest in your touring year by simply emailing tourclub@baytours.co.nz or calling our office on 06 845 2736 ext. 1 and becoming a **Patron Member** today.

PATRON PARTNER BENEFITS

The businesses below have partnered with us to offer additional benefits to Tour Club Patrons. Sign up now to enjoy these exclusive discounts.



Lone Star - Napier

You and your guests enjoy 10% off the bill when you dine together at Lone Star.



Ahuriri Pharmacy

Get 10% off all your health and beauty needs or gifts for your family and friends.



Silky Oak Chocolate

Indulge in some gourmet treats and get 10% off retail and food (including café)*.



Bay Plaza Pharmacy

Shop for all your beauty and healthcare needs and get a 10% discount.



Birdwoods

Treat yourself to a coffee or stay for lunch and get a 10% discount on all café items.



We sow, you grow

10% off all locally grown herbs, vegetables and plants for your garden.

To get your offer, you will need to show your current membership card
*Discount not available on already price reduced items.

Tour No. 1119

A Visit to Waihua Station

Date	Tuesday 19 th November
Times	All collected by 9.20am
Cost	Patron: \$155.00 Member: \$180.00
Payment	Full payment upon booking please
Price includes	Door to door transport, morning tea, lunch

Twenty minutes south of Wairoa you turn off the highway onto Glendining Road which meanders along beside the Waihua River. When you run out of road you've arrived at **Waihua Station**. Rose Haynes is the fifth generation of the Glendining family to live and work on Waihua, a sheep and beef operation, and her daughters, Saba and Jess, are the sixth. The history of this property, over the more than 140 years the family has farmed here, features a series of resourceful women through the generations on whom responsibility for running the station has landed. Taking over the day-to-day running of the station from her parents Bob and Jill, Rose converted her beloved grandmother's cottage on the property into holiday accommodation. Constant requests from guests to sample the farm's meat prompted Rose to start selling the station meat under their own labels, 'Hawke's Bay Heifer' and 'The Black Sheep'. Grans' old garage has been converted into a farm shop that opens every Sunday and also sells cakes, coffee and pizzas from their own Italian pizza oven and even homewares. Join us in visiting Rose and her parents at **Waihua Station** for lunch and to hear all about the station and its history.



Tour No. 1121

Hidden Gems of the Southern Coast

Date	Thursday 21 st – Friday 29 th November
Times	All collected by 8.10am
Cost	Patron: \$5,895.00 Twin Share \$6,875.00 Single Room Member: \$6,475.00 Twin Share \$7,450.00 Single Room
Payment	\$1000.00 upon booking, balance due Thursday 26 th September
Price includes	Door to door transport, flights, lunch x6, dinner x8, accommodation x8, breakfast x8, morning tea x2

Over the years Bay Tours has taken many trips into the South Island hinterland. Spectacular inland destinations have lured us away from the coast. As a consequence we have often sped past, or stayed only briefly in, towns and districts from Mid-Canterbury to North Otago that deserve more attention. Places such as **Geraldine, Temuka, Waimate, Duntroon and Oamaru** are gems hiding in plain sight. These places possess rich, storied histories and conjure up images of iconic scenes and characters. On this tour, we will stop in off the southern highway and experience some of them.

Over the course of **8 days**, we'll visit some of the great farming estates such as coastal **Longbeach** and **Coniston** - home of 'The Ashburton Run'. **Station Peak** homestead at Hakataramea and historic **Totara Estate**, south of Oamaru. We'll visit iconic food producers like **Barkers of Geraldine** and **Whitestone Cheese** in Oamaru. Marvel at



natural wonders as we walk amongst the '**Elephant Rocks**' at Duntroon and the famous **Boulders at Moeraki**. We'll visit spectacular gardens like the private **Broadfields** at Rolleston and the **Trevor Griffiths Rose Garden** in Timaru. Local industrial and technological landmarks are on full view too. From 19th century working wonders like **Nicol's Blacksmith Forge** and the belt-driven **Clark's Flourmill** to the roar and thunder of steam locomotives and one of the last remaining RNZAF Skyhawk fighter aircraft. We'll celebrate locals who conquered the world like runner **Jack Lovelock** and champion racehorse, **Phar Lap**. And we'll visit the quirkiest of buildings, from '**Dot's Castle**'

at Riverstone to the visual curiosity that is the **Kurow Pub**. And if you think Napier has the best Art Deco example of a hotel called Masonic, you're in for a surprise. We'll get up close to wallabies at wonderful **Waimate** and even plant a Totara tree with the community there, to mark our visit. All this and more as we scratch below the surface of these remarkable places off the southern highway. This will be one of the highlight tours of 2024.



Tour No. 1126 Notable Homes of Hawkes Bay

Date	Tuesday 26 th November
Times	All collected by 9.20am
Cost	Patron: \$200.00 Member: \$225.00
Payment	Full payment upon booking please
Price includes	Door to door transport, morning tea, lunch

On this wonderful day out in late Spring we visit three notable homes that have each been part of our region's history for over 120 years. Our first visit is to **Greenhill Lodge** in the Raukawa Valley. The house was built for Archibald McLean in the 1890s. He had purchased 3,300 acres from the giant Maraekakaho Station and commissioned prominent Christchurch landscape gardener, Alfred Buxton, to design the gardens around the house. We'll enjoy morning tea with the current owners and take a tour of the house. From Raukawa we take the



beautiful scenic drive up SH50 to the Ashley Clinton district and the house known as **Ashcott**. In the A'Deane family for more than 100 years, Ashcott has played host to many dignitaries over the years from prime ministers to Princes of Wales. The current owners will take us on a tour of the property. Our third and final visit is to **Woburn** at Hatuma, a house built for Thomas Purvis Russell in 1893. It was at the centre of a property that was originally nearly 27,000 acres but this, along with neighbouring sheep runs Oruawhoro and Mt Herbert, was broken up into smaller holdings and sold off less than a decade after the homestead was built. We'll enjoy High Tea here together with a tour of the house with the owner. These three homes connect us strongly with the formative years of colonial settlement of our region and it's a privilege to be able to enjoy them still today.

Tour No. 1128

Spring Pub Lunch & Quiz

Date	Thursday 28 th November
Times	All collected by 11.30am
Cost	Patron: \$155.00 Member: \$185.00
Payment	Full payment upon booking please
Price includes	Door to door transport, lunch



This latest edition of our popular series will see us return to the bright and spacious surroundings of The Filter Room in Meeanee with Otis and his team. Remember, this is a team event with each table forming a team to participate in the **Pub Quiz** through **Lunch**. The format is pretty simple. There will be 8 rounds of questions arranged around the lunch courses with each round

having a broad category such as 'Geography' or 'Television & Movies'. Peter, our Quizmaster, will ask 10 questions in each round and each team writes down their answers on the sheet provided. Ken collects each team's completed answer sheet at the end of the round and replaces it with a blank sheet for the next round whilst Kerren tallies the scores. Every few rounds Peter will read out the correct answers for the rounds just gone and Kerren will update us on the team scores so that everyone has an idea of how they're going. It's huge fun and everyone contributes something to their team at some stage. Prizes and prestige for the winners are up for grabs and there's also spot prizes so everyone's in with a chance. Join us for a great lunch and lots of laughs as the teams battle it out to be **Bay Tours Pub Quiz Champions**.

Tour No. 1130

Kaimanawa Heritage Horses

Date	Saturday 30 th November – Monday 2 nd December
Times	All collected by 8am
Cost	Patron: \$1,425.00 Twin Share \$1,715.00 Single Room Member: \$1,570.00 Twin Share \$1,890.00 Single Room
Payment	\$500.00 upon booking, balance due by Friday 4 th October
Price includes	Door to door transport, accommodation x2, breakfast x2, morning tea, lunch x2, dinner x2

An expertly guided trip into the land of the **Kaimanawa Horses** is a rare and wondrous experience. In fact, it's five years since we last had this opportunity.

From the first arrival of Europeans into the central North Island in the mid-19th Century there are records of horses of various breeds escaping from the large inland Hawke's Bay stations into the vast 'desert' area of the Central Plateau. The dominant 'origins' of the **Kaimanawa** breed are believed to be Exmoor and Welsh Mountain ponies released in the 1870s. These hardy and sure-footed breeds were a huge part of pioneer life in early European settlements.

And over the last 150 years there's been a few deliberate releases of unwanted horses into the area as well - from the old army cavalry units, farms and even the odd 'Desert



Road drop-off'. The first recorded sighting of groups of wild horses around the Kaimanawa Ranges was as far back as 1876.

Since 1993 there has been an annual muster in order to keep numbers down to around 300 horses which is the figure believed to allow the herd to remain viable whilst also preserving the delicate and unique environment they live in. Initially, all horses mustered were culled. In 2003 the **Kaimanawa Heritage Horse Trust** (KHHT) was established to work with the **Department of Conservation** and other interested groups to find homes for as many of the mustered horses as possible and some 600 mares and younger males have been homed in the years since.

Hosted by the KHHT and the **NZ Army**, we will be guided into the heart of the territory of this unique breed of horse – much of which is NZ Army land. With experts aboard our coach from both D.O.C. and KHHT, we'll set out from the NZ Army camp at **Waiouru** and make our way to the actual muster area by lunchtime with time to stop and observe the family groups of horses we come across along the way. After lunch, we'll head into the other side of the reserve to spot more roaming horses and experience the unique landscape of this part of the country. Due to the relative isolation of the area in which the breed live, we will overnight either side of our big day with the horses.

Join us as we step into the world of New Zealand's only wild horse breed and see them in their breath-taking natural surroundings. An experience not to be missed.

Tour No. 1203

Kapiti & Matiu/Somes Islands

Date	Tuesday 3 rd – Friday 6 th December
Times	All collected by 9.15am
Cost	Patron: \$2,225.00 Twin Share \$2,615.00 Single Room Member: \$2,485.00 Twin Share \$2,755.00 Single Room
Payment	\$500.00 upon booking, balance due by Monday 7 th October
Price includes	Door to door transport, accommodation x3, breakfast x3, dinner x3, morning tea x2



It's been a while since Bay Tours visited either magnificent **Kapiti Island** or mysterious **Matiu/Somes Island**. Historically notable as the stronghold of Ngati Toa warrior chief Te Rauparaha, since 1897 conservationists have worked to gradually return Kapiti Island to its original splendour. Today the island is one of New Zealand's most valuable nature reserves and bird sanctuaries. Burgeoning numbers of smaller birds like kakariki (red-crowned parakeet), robin, bellbird, saddleback and stitchbird join kokako, takahe, kereru (NZ wood pigeon), kaka and weka in abundance. In contrast to Kapiti, Matiu/Somes Island, which is the largest island in Wellington Harbour, has spent much of the last 140 years trying to keep its inhabitants ON the island rather than stopping them from coming ashore. Its harbour location made it an ideal position for the country's first inner harbour lighthouse, a human quarantine station, an internment camp, military defence position and animal quarantine station. Basing ourselves at lovely **Raumati South**, our tour will include a full day spent on Kapiti Island hosted and guided by local experts, as well as an exploration of the many historical sites of Matiu/Somes Island. Here's a summary of the tour;

Day 1: Departing Hawke's Bay we enjoy a cuppa at Waipawa and make our way to **Palmerston North** and lunch at the splendid **Elm Café**. After lunch we make our way to the Kapiti Coast and our home for the next 3 nights, the lovely **Raumati Sands Resort**.

Day 2: Today we will spend the day on **Kapiti Island**, beginning with biosecurity checks at Paraparaumu Beach before we take the boat across to the island itself. Our visit will include guided walks that focus on the history of the island before the arrival of humans and will point out the unique flora and fauna that thrives there. We'll enjoy a hosted lunch with the only family permitted to live on Kapiti Island plus there'll be plenty of free time to explore the island at your leisure. This evening we enjoy a special dinner at the renowned **50/50 Restaurant** in Paraparaumu Beach.



Day 3: We make our way to Wellington and spend the morning exploring **Matiu/Somes Island** in Wellington Harbour. Check out the historic quarantine stations and WWII gun emplacements as well as the lighthouse – still in operation – together with the stunning views all around the harbour and up the Hutt Valley. We reboard the East By West ferry at lunchtime and carry on across the harbour to beautiful **Days Bay**. After a leisurely lunch at **The Pavilion** we make our way back to Raumati via Petone and the picturesque Pauatahanui Inlet.



Day 4: A special treat awaits us this morning. We depart Raumati and travel back into the Hutt Valley over Hayward's Hill. In Silverstream we'll visit a special 'Garden Of National Significance', the private **Gillies family garden**, where Pete Gillies will guide us around his ¾ acre garden before we have morning tea in their stunning Arts & Crafts style house designed and built by

James Chapman-Taylor. We make our way through the lovely Wairarapa, stopping for lunch in Greytown, before we head homeward.

The islands and gardens we'll visit on this tour are unique treasures of our country, preserving flora and fauna of all kinds and much of the social history of settlement in the Wellington region too. It is a privilege to have access to these sites – some private, some difficult to get to. Join us on a pilgrimage to a few of our country's most special places.

Tour No. 1205

Lodges Of The Marlborough Sounds

Date	Thursday 5 th - Thursday 12 th December
Times	All collected by 8.30am
Cost	Patron: \$4,895.00 Twin Share \$6,425.00 Single Room Member: \$4,950.00 Twin Share \$6,595.00 Single Room
Payment	\$1,500.00 upon booking, balance due by Thursday 17 th November
Price includes	Door to door transport, accommodation x7, breakfast x7, lunch x3, dinner x6

Last Decembers' experience on the **Lodges Of The Marlborough Sounds** tour was such a success that we're offering a similar exciting experience this year. 'The Sounds' are home to several exclusive lodges and resorts. Names such as **The Portage**, **Furieux Lodge** and **Punga Cove** conjure up images of waters-edged retreats nestled in bush-clad corners that lead down to a beautiful sandy beach and a jetty for the boat.

Day 1: We begin our journey heading south where we'll have lunch in Palmerston North before making our way to catch our ferry across **Te Moana-o-Raukawa** (Cook Strait). Tonight, we stay at the **Picton Beachcomber**.

Day 2: This morning you'll have free time to explore Picton. We then take the first of what will be a number of water taxi trips and say goodbye to our coach for a few days. At the outer reaches of the **Queen Charlotte Sound** lies **Endeavour Inlet** and, in the upper reaches of the inlet sits **Furneaux Lodge**, our home for the next two nights. The beautiful historic homestead, which is at the centre of activities at the Lodge, was originally the hub of an estate that stretched over 3,500 acres and is today surrounded by our chalets.



Day 3: Today is a **FREE DAY** to relax or explore around the Lodge. Perhaps a short walk along part of the Queen Charlotte Track, a soak in the spa pool, take a fishing rod down to the jetty and try your luck, grab a book from the library and relax on the deck of your chalet...or maybe all these things. We'll re-convene over dinner to swap stories of the day.

Day 4: We cross **Endeavour Inlet** today. Those more active can walk part of the famous **Queen Charlotte Track** while the rest of us go by boat across the Inlet to **Punga Cove Resort**. Set amongst stunning native bush, **Punga Cove** has long been a sought-after



destination for international travellers wanting to relax in style. And their signature **Punga Fern restaurant** is situated to give breath-taking views across the entire inlet. We'll enjoy lunch here before checking in to our rooms with time to explore the resort this afternoon.

Day 5: After a slow 'Sounds time' start we depart on the water taxi heading towards **Torea Bay**. Here we'll be met by staff of our next destination, **The**

Portage, based over the hill in **Kenepuru Sound**. This afternoon there's time to explore our new surroundings before dinner in their highly acclaimed restaurant.

Day 6: Again, let the tranquil tides of the Sounds help you relax here at **The Portage** today. Enjoy a game of croquet on the lawn, try snorkelling in the crystal-clear waters of the Sound or simply relax in the library with a good book as we have only one activity planned for today. A cruise into the remote **Kenepuru Sound** with local boat guide, Adrian. These turquoise waters have a fascinating history and we'll also harvest mussels straight from the water to bring to the chef back at the lodge to cook for us tonight.

Day 7: Another superbly slow start to today as, mid-morning, we say farewell to **Kenepuru Sound** and **The Portage** and head back to 'the mainland' where we swap our water taxi for an Interislander ferry and head back across Cook Strait and spend our final night at the **Copthorne Oriental Bay Hotel**.

Day 8: This morning we head homeward via **Palmerston North** where there's time for a bit of shopping before we arrive back in the Bay with many memories of a wonderful week together in 'the Sounds'.

It's in summer that we find the **Marlborough Sounds** at their sparkling best, when the water glistens and the sun warms the bush. Come and let the locals show you around whilst enjoying the care and standards of touring Bay Tours is known for.

We can't think of a better way to relax and treat yourself before Christmas.

Tour No. 1209

Tukituki Cycle Trail & Lunch

Date	Monday 9 th December
Times	All collected by 9.30am
Cost	Patron: \$185.00 Member: \$210.00
Payment	Full payment upon booking please
Price includes	Door to door transport, morning tea, lunch

Since Cyclone Gabrielle knocked out a couple of small bridges on the **Tukituki Cycle Trail** in CHB, the council have done a great job re-surfacing the lime trails around **Waipukurau** and we think it's about time we enjoyed a group ride around it again. In fact, we haven't ridden the trail since it was extended westward to the Ongaonga road and a concrete trail was laid next to the highway taking the trail all the way to **Waipawa**. For some years we've been taking an annual multi-day tour to a different



one of the great New Zealand Cycle Trails each year with people able to take their own bikes. For those not familiar with the process, we have a brilliant racking system, devised by Ken, that fits perfectly into our little furniture truck. We can transport your bike in safety and security to anywhere we wish. This ride, which is only about **30kms**, will largely follow the banks of the river around and between **Waipawa** and **Waipukurau**. We'll ride in the morning – breaking it up with a cuppa - and finish with a wonderful picnic lunch. We'd love to see those who enjoy a bike ride and who haven't been on our cycle tours before. This could be your perfect starting point – as well as our regular biking crew. Because of logistics, numbers are limited so don't miss out - book now.

Tour No. 1212

A Day on The Back Country Roads

Date	Thursday 12 th December
Times	All collected by 9.10am
Cost	Patron Special: \$125.00 Member: \$160.00
Payment	Full payment upon booking please
Price includes	Door to door transport, morning tea, lunch



Late Spring is a great time to enjoy a drive on Hawke's Bay's country roads. Today we'll spend time meandering the back roads of **Central Hawke's Bay** in a more or less clockwise direction from Hastings. First out along the Tukituki Valley to **Otane** where we have morning tea at the new **Henry's Family Pies** in the old library building. Then it's out to the **Flemington** area south of Waipukurau, over through **Hatuma** to the **Ashley Clinton** district for a picnic lunch at **A'Deane's Bush**. From here we drive through **Argyll** and **Te Onepu** to **Maraekakaho**, then back towards **Hastings** via Bridge Pa. These districts will be bursting with late Spring colour and growth and on a drive like ours there's no better place to be – sitting high up in the coach with a very different view than from a car. Book now to come along for the ride.

Tour No. 1224 Christmas Mystery

Date	Tuesday 24 th – Saturday 28 th December
Times	All collected by 8.30am
Cost	Patron: \$3,225.00 Twin Share \$3,815.00 Single Room Member: \$3,615.00 Twin Share \$4,200.00 Single Room
Payment	\$800.00 upon booking, balance due by Wednesday 23 rd October
Price includes	Door to door transport, accommodation x4, breakfast x4, lunch x3, dinner x4, morning tea x2

The ongoing popularity of our Christmas ‘mystery’ getaway format means we have to try and keep another secret again this year. Christmas Eve will again find us heading somewhere different and taking in the sights, sounds and flavours of another ‘not Hawke’s Bay’ destination. If you’ve always quite liked the idea of being whisked away for Christmas, then perhaps this is the year. Our Christmas regulars will tell you that once you try it, you’re hooked!

Kerren and Ken, owners of Bay Tours, have everything planned (and Kerren reckons this year will be one of the best – ever!) and can’t wait to take you on our own annual ‘Magical Mystery Tour’.

What we can tell you is that you’ll enjoy yourself with like-minded people and memorable experiences.



Tour No. 115 Exploring Tasmania

Date	Wednesday 15 th – Wednesday 29 th January
Times	All collected by 12pm
Cost	Patron: \$10,595.00 Twin Share \$13,150.00 Single Room Member: \$11,655.00 Twin Share \$14,465.00 Single Room
Payment	\$3000.00 upon booking, balance due by Wednesday 11 th December
Price includes	Door to door transport, accommodation x14, breakfast x14, morning tea, lunch x5, dinner x14



Across the Tasman Sea from us lies an island bursting with gorgeous scenery and an extensive array of unique wildlife, conveniently fitted into a heart shaped land mass less than a quarter of the size of New Zealand. This incredible island is **Tasmania**. In **January 2025** Bay Tours will spend **13 Days** exploring this incredibly diverse place with all four points of the compass covered and loads in between. Here’s just a taste of what our

exciting itinerary has to offer;

Day 1: Our tour begins with an afternoon flight to **Auckland** where we overnight ready for our flight to **Tasmania** in the morning.

Day 2: This morning we take our direct flight from Auckland to Tasmania’s capital city, **Hobart**. And after an orientation tour of the city, we settle into our base for the next four

nights, the centrally situated and exciting new **Crowne Plaza Hotel** with stunning views of the city and harbour and rooftop restaurants & bar.

Day 3: We spend today at historic **Port Arthur Convict Settlement**, site of one of Australia's most notorious penal colonies. A guided tour and short harbour cruise provide different perspectives on the convict past. We also visit picturesque **Eaglehawk Neck** and **Pirates Bay**.



Day 4: A **FREE DAY** to explore **Hobart**, Australia's second oldest city, at your own pace. You may want to join your Tour Hosts at **Salamanca Markets** in the morning.

Day 5: Today we head south of Hobart, following the D'Entrecasteaux Channel, through the beautiful **Huon Valley** to visit the seaside town of **Margate** which offers shopping with a real difference. Then it's on for lunch at **Crawleighwood**, a private garden renowned for its maple woodlands and ancient Gondwanaland plantings. Later we visit Hobart's historic **Shot Tower**.

Day 6: We say "Farewell" to Hobart, for now, and head northwest climbing onto the **Central Plateau**. Amaze at '**The Wall In The Wilderness**', an astonishing work of art depicting the history of Tasmania's Central Highlands. Notice the changing landscape as we descend the Chamouni Valley to the copper mining town of **Queenstown**. Finally, we arrive at **Strahan Village** on the west coast, our home for the next two nights.

Day 7: Today we board the giant '*Spirit Of The Wild*' catamaran to cruise across **Macquarie Harbour** and up the **Gordon River** into the heart of Tasmania's wilderness.



Ancient sassafras and myrtle rainforest lead us to **Heritage Landing** where we can go ashore amidst this incredible environment. After a delicious lunch onboard we voyage to **Hell's Gates** past **Sarah Island** – the worst convict settlement of them all. A full day's cruising concludes back at **Strahan** where we attend the long standing play – **The Ship That Never Was**, followed by a delicious buffet dinner back at the hotel.

Day 8: Continuing north we arrive at **Cradle Mountain National Park** and enjoy a guided 4WD tour including **Dove Lake** and **Waldheim Chalet** before we resume our journey towards the northern coast through mountains and grass plains to our hotel in the coastal town of **Burnie**.

Day 9: This morning we visit the historic village of **Stanley** nestled at the foot of an ancient volcano. Time to explore the town here & perhaps take the chairlift to the summit. Now we begin to head eastward across the northern coast of the island and through the region known as the **Great Western Tiers** towards **Launceston**, Tasmania's second city. With its elegant Victorian architecture and century-old parks, the city has one of Australia's best preserved early cityscapes. Tonight, we stay at the elegant **Country Club of Tasmania**.

Day 10: We spend this morning exploring the awesome natural wonder that is the **Cataract Gorge**. It's incredible to be in such a rugged, spectacular environment and yet be only a few minutes from the middle of **Launceston**. Later in the morning we continue our journey eastward, stopping in the town of **Legerwood** to admire their famous **Carved Trees Anzac Memorial**. We stop for lunch today in the timber town of Branhholm. This marks the halfway point of a march, known as '*The Trail of the Tin Dragon*' that Chinese tin miners made in the 1870s from Launceston to our destination, St Helens. This afternoon our drive drops down to the east coast and our overnight accommodation at

pretty **St Helens** with perhaps time for a walk amongst the giant Peron Sand Dunes before dinner.

Day 11: Following the white-sand beaches of the east coast we head south visiting **East Coast Natureworld Wildlife Sanctuary** at **Bicheno** where we'll encounter the famous Tasmanian Devil, Wombats, Echidnas, Kangaroos & Wallabies as well as native birds and reptiles. After lunch at the **Lobster Shack** we can walk the easy Bicheno Foreshore Footway to view the spectacular blowholes then we're back on the road and finally crossing the **Derwent River** back into **Hobart** from the east, checking back into the **Crowne Plaza Hotel**.



Day 12: No visit to Hobart would be complete without a ferry trip up the Derwent River to **Berriedale** and the amazing **MONA** (Museum of Old and New Art). This complex of breathtaking architecture combines museum, art gallery, restaurants, music venues and open spaces that will captivate and engage you.

Day 13: Today you get to relax with a **FREE DAY** in Hobart.

Day 14: We say our final farewells to Tasmania and fly back to **Auckland** where we spend one more night before heading home to **Hawke's Bay** the following morning.

This tour is the ultimate opportunity for visitors to this island jewel to connect with what matters and as the locals put it 'Come up for Air'. Couple this exciting itinerary with the reassuring level of care, service and attention to detail that our members have come to expect from Bay Tours and '**Exploring Tasmania**' is a must-do experience.

Tour No. 116 Chatham Islands

Date	Thursday 16 th – Friday 23 rd January
Times	All collected by 9.20am
Cost	Patron: Twin Share \$6,585.00 Single shared facilities \$6,225.00 Single Room \$9,665.00 Member: Twin Share \$7,250.00 Single shared facilities \$6,850.00 Single Room \$10,635.00
Payment	\$1,500.00 upon booking, balance due by Friday 29 th November
Price includes	Door to door transport, accommodation x7, breakfast x7, morning tea x4, lunch x4, afternoon tea x4, dinner x7, flights



Join our small group tour and experience the absolute uniqueness that is '**The Chathams**'. Trees that lean one way, rugged landscapes containing an array of volcanic formations, ancient forest remnants, rolling farmland, sandy beaches, abundant oceans and spectacular ever-changing scenery. The isolation, moody climate and history that includes Moriori, Māori, sealers, whalers, missionaries, farmers and settlers gives them a strong community spirit. From Hawke's Bay we'll fly, via **Wellington**, into the **Chatham Islands** where our home for the next **7 nights** will be **Hotel Chatham**. During our visit, we'll explore the whole island. Highlights will include the views from the 200m high **Rangi Ika Cliffs**, the life size statue of **Tommy Solomon**, the last known full blooded Moriori, visit **Blind Jim's Creek** and search the coastline for **fossilized shark's teeth**. Also, the beautiful **Hapupu National Reserve Moriori Tree Cravings**, enormous **Basalt Columns**, **Port Munning Seal Colony**, **Kaingaroa Fishing Village** and much, much more. The warmth of the local hospitality is legendary and the quality of the seafood will astound you. This is a bucket-list trip for many and we can't wait to show you around.

Tour No. 131

A Local Guides Us Through Mahia

Date	Friday 31 st January
Times	All collected by 8.20am
Cost	Patron: \$180.00 Member: \$210.00
Payment	Full payment upon booking please
Price includes	Door to door transport, morning tea, lunch

A summers' day spent in Northern Hawke's Bay is always a day well spent. And the drive to **Wairoa** is always a scenic one. But today will be something special. After a slap-up morning tea in **Wairoa**, beside the river, we'll continue north to collect our special guest at **Nūhaka**. Local identity **Arthur Bowen** has lived in this part of Hawke's Bay forever. What he doesn't know about the history and goings-on of the local area isn't worth knowing. Arthur will come aboard the coach and regale us with fun facts and stories about **Nūhaka** and **Mahia** as we head towards our lunch destination, the **Rocket Café** in **Mahia** (which just happens to be run by Arthur's sister, Janey). After lunch we'll head for the beach, slip our shoes off, and feel the warm sand between our toes as we enjoy a gentle wander. We begin our journey homeward stopping by the legendary **Riverview Dairy** in Wairoa for an ice cream to keep us going. Book your place now for a hazy, lazy summers' day of fun in the country.



Tour No. 203

Taupō Luxury Dining

Date	Monday 3 rd – Wednesday 5 th February
Times	All collected by 5.40am
Cost	Patron: \$1,875.00 Twin Share \$2,350.00 Single Room Member: \$2,155.00 Twin Share \$2,585.00 Single Room
Payment	\$500.00 upon booking, balance due by Monday 9 th December
Price includes	Door to door transport, accommodation x2, breakfast x2, lunch x3, dinner x2



Following on from our very popular *Capital & Country Luxury Dining* tour in April we've created another fabulous dining experience. This time a little closer to home. Hats are not the first thing you think about when selecting a dining destination (although it would be fun to have everyone wear a hat to the table). Highly esteemed foodie magazine CUISINE publishes an annual 'Good Food Guide' which lists the very best restaurants from around the country as judged by their restaurant reviewers following anonymous visits throughout the year. The Best of the Best are awarded 'Hats' ranging from one to three, similar to the French Michelin Star system. Taupo has two 'Hatted' restaurants and in February 2025 we're planning group dinners at both plus a number of other outstanding culinary experiences all rolled up into one tour. Here's a summary;

Day 1: This morning we trundle to **Taupo** and head to our favourite lakeside picnic spot at Four Mile Bay where we'll enjoy a delicious summer lunch catered by **Prue Campbell** of **The Brantry** restaurant. From here we head to one of Taupo's best kept secrets – a private garden at the foot of **Mount Tauhara** that's rated as 'A Garden of National Significance' by the NZ Gardens Trust. Owner, Lorna Henry, will welcome us and show us around her 1.5 acre beauty. We then head to our accommodation for the next two nights, the luxurious **Hilton Hotel Taupo**. Our day culminates with a 4-course dinner at Hat recipient **The Bistro**. Cuisine's Good Food Guide says: "There's a very simple secret to this great Taupo success story – Keep it simple, but superb."

Day 2: After a leisurely start to the day and one of the Hilton Hotel's breakfasts we head north to **Lake Rotoiti** where we'll enjoy a **private cruise on the lake** to hot water shorelines where you can have a paddle. If it's a really hot summer's day our skipper will find a little cove and tie up where we can enjoy another al fresco lunch by **Prue Campbell**. There are some great swimming spots at the northern end of the lake too. What a great way to spend a day in high Summer. We return to the **Hilton Hotel**



Taupo mid-afternoon where you can lounge by the pool with a cocktail or enjoy some time relaxing on your balcony. Tonight is something special. A 5-course degustation dinner at **Embra**, recipient of 2 Hats from Cuisine Good Food Guide. They say: "They take great pride in their dishes which combine incredible French and British cooking techniques with modern local cuisine." Nuff said.

Day 3: There's time for a refreshing dip in the pool this morning before we have to checkout of our hotel. There'll be time in town to wander the lakefront, indulge in a little retail therapy or sit and watch the world go by before we make our way around through to Acacia Bay to **L'Arte Café & Gallery** where owner Jo Brennan will create a special lunch menu for us before we begin our journey back to the Bay.

Taupo's unrivalled central position gives it access to the best produce from half a dozen regions. Perhaps this is one of the reasons for the rise of so many great food establishments, of all kinds, in the town. On this tour we're trying our fair share of them and having plenty of fun along the way.

Come join us and treat your senses to some of the best culinary experiences around.



Doubtful Sound – see tour #803 on page 49

Tour No. 206

A Pacific Island Cruise on Celebrity Edge

Date	Thursday 6 th – Wednesday 19 th February
Times	All collected by 9am
Cost	Patron: \$9,555.00 Twin Share \$15,665.00 Single Room Member: \$10,510.00 Twin Share \$17,230.00 Single Room
Payment	\$1500 initial deposit, \$4000 2nd deposit due 17th September, final balance due by 2nd December
Price includes	Door to door transport, accommodation x1, dinner x1, breakfast x1, 12 night cruise package including all meals whilst on board



International cruises have been a regular part of the Bay Tours offering to Tour Club members over the years. The concept of a *'floating hotel delivering us to new destinations'* is a compelling one, and the fact you only unpack once while you travel is a definite plus.

We think it's time cruising returned to the Tour Club portfolio of tours. We're mindful of selecting an itinerary close-to-home for starters and also of

choosing a new generation of cruise liner to reflect a new era of travel. So, to re-launch cruising as part of the Tour Club family we've selected what many experts rate as the finest and most revolutionary cruise ship launched in a decade. From the wonderful **Celebrity Cruise Line** – so beloved by our past cruisers – comes perhaps the most advanced cruise liner to ever enter Australasian waters. Introducing **CELEBRITY EDGE**. Amongst many firsts, **CELEBRITY EDGE** is the first resort at sea to receive a **Recommended Rating from Forbes Travel Guide**.

The Ship

Known in the tourism and travel industries simply as *'The EDGE'*, Australasia has never seen a ship like this before. Named *'One of the World's Greatest Places'* by Time Magazine, **The EDGE** is widely acclaimed for its revolutionary 'Outward-facing' design matched with onboard experiences that stand apart from anything else at sea. From the incredible **Magic Carpet** exterior elevating deck, which rises and lowers to different levels of the ship for a variety of activities, to the new concept of the **Infinite Veranda** making your stateroom 23% larger than those on the Solstice Class ships, innovation and world-first design will enhance every aspect of your cruise. Imagine a theatre whose main stage extends out to be surrounded by seating and eight giant projection backdrops. All aimed at an immersive experience for the theatre-goer. Then there's the transformative three storey **Grand Plaza** that will amaze you. Very much the epicentre of the ship, three decks open up to create an airy interior space reminiscent of a piazza you might find in the centre of an Italian town. And perhaps the ultimate manifestation of the outward-facing philosophy of **The EDGE** is to be found in **Eden**, three levels of relaxing, eating and entertaining spaces wrapped in glass, at the stern of the vessel that acts as a *'window to the world'* and which also includes al fresco



seating for taking in those refreshing sea breezes. The sense of discovery and connectedness with the world couldn't be more acute. And all this is before we consider the many favourite and familiar Celebrity Line relaxation spaces like the adults-only **Sanctuary** and the gorgeous **Rooftop Garden**. **The EDGE** will make you feel more connected to the Pacific around you and the island destinations you visit that ever before.

The Itinerary

For **12 nights** we'll cruise into the magnificent **South Pacific** departing from, and returning to, **Auckland**. So, no international flights or airports to contend with. Those who



who joined us on our 2019 Pacific cruise will be familiar with a number of the island destinations and this time we reckon we know a lot more about where to head for at each.

Beautiful **Bay Of Islands** is the first port of call as we tender into the jetty at Waitangi. The lovely waterfront and historic sites of both **Paihia** and **Russell** will lure you in. **Tour Tip:**

Either the Mövenpick ice cream or Cellini gelato stores on Williams Rd in Paihia for a delicious mid-afternoon treat.

Suva, Fiji is the next port after a couple of days settling into your resort at sea. Beyond the Municipal Markets, out the front of where our ship is berthed, on the southern side of the city are the tranquil **Thurston Gardens** and excellent **Fiji Museum**. **Colo-i-Suva Forest Park** is a 10-minute taxi ride into the hills. Laced with walking trails, picnic spots and crystal-clear streams, this is a relaxing, cool connection with nature.

Tour Tip: If heading to Colo-i-Suva, take your togs. There are a couple of superb water holes where you can cool off.

Lautoka, Fiji in the North west of Viti Levu island is Fiji's second largest town and has always been the centre of Fiji's huge sugar cane industry. Take a historical tour of the district, visit one of the great Pacific gardens called **Gardens of the Sleeping Giant** which includes a superb orchid garden or enjoy a Mud Treatment at **Sabeto Hot Springs**.

Tour Tip: Take a taxi to **Vuda Point Marina**, south of Lautoka, and enjoy a waterfront lunch at The Boatshed restaurant.

Apia, Samoa is our next stop after we've enjoyed another relaxing day onboard **The EDGE**. 3,000 years of Samoan culture blends with its 19th century colonial past in this pretty and friendly capital. Wander into town and meet the locals at the wonderful **Fugalei Market**. This large undercover venue has dozens of stall holders selling everything from handicrafts & jewellery to tropical fruits and traditional Samoan meals. Gasp at the astonishing interior of the **Cathedral Of The Immaculate Conception**, enjoy a free guided tour of the **Museum Of Samoa** or check out **Villa Vailima**, the residence of author Robert Louis Stevenson.



Tour Tip: Call in to the **Samoan Cultural Village**, tucked in behind the Tourist Information Centre on Beach Road, for an immersive cultural experience.

Pago Pago, American Samoa is, in fact, a series of villages along one of the South Pacific's best deepwater harbours. The 'town centre' is in the village of **Fagatogo**, just a few minutes walk from where our ship is docked. If you just want a wander, your first

place to visit should be the **Jean P. Haydon Museum** for a great insight into this U.S. territory. Another couple of minutes walk along Route 001 is **Fagatogo Square**, an indoor shopping complex which also houses the Visitor Bureau.



Tour Tip: Get on one of the brightly decorated 'Aiga' buses, or grab a cab, and take the 20-minute drive to **Two Dollar Beach** for great swimming and snorkelling on this spectacular golden sand beach.

After a busy couple of days of port-hopping, we enjoy a few days cruising back to Auckland and enjoying everything our wonderous floating resort has to offer.

We believe that this combination of itinerary and ship selection offers an ideal opportunity for past cruisers and those who haven't cruised before to experience the new era of cruising with what is a simple New Zealand based round trip. Join us and enjoy some of the glories of our own Pacific back yard and the wonder that is **CELEBRITY EDGE**. Bay Tours owners, Kerren & Ken Withington will be hosting this tour. For more information and a complete itinerary, call Kerren in the office or email her: kerren@baytours.co.nz

Tour No. 220

Dinner at High St Bistro - Dannevirke

Date	Thursday 20 th February
Times	All collected by 4.20pm
Cost	Patron Special: \$175.00 Member: \$210.00
Payment	Full payment upon booking please
Price includes	Door to door transport, dinner

It has always been the way of things that people in the regions are often forced to gravitate towards the bigger cities for work. The bright lights are an added incentive for the younger ones. Well, here's a story about the reverse happening. Back in 2017, Auckland residents Campbell and Nicole Sprague bought an old villa in Dannevirke that they fell in love with. It wasn't long after that they made the permanent move from Mt Eden to the Tararua town. Three years later mega-experienced chef Campbell enticed their son,



Brock, a veteran of the Auckland hospitality industry for over a decade, to also migrate south with his family. The workload in Auckland was getting on top of him and with a wife and kids Brock decided he needed a change. They leapt upon an opportunity to lease part of the old Public Trust Building on Dannevirke's main drag that had been The Vault and **High Street Bistro** was born. Since then, their reputation has spread far and wide with diners coming from as far away as Wellington to heap further acclaim upon the enterprise. So, on a warm winters' evening why not enjoy a group ride down there for dinner?

We'll enjoy a **3-course dinner** in this fabulous space and discover what all the fuss is about. We're very excited to be able to showcase and support a dining venue in a provincial town that's successfully holding its own. Come and be part of the magic.

Tour No. 224

Canterbury Homesteads & Gardens

Date	Monday 24 th February – Tuesday 4 th March
Times	All collected by 8.20am
Cost	Patron: \$3,955.00 Twin Share \$4,795.00 Single Room Member: \$4,350.00 Twin Share \$5,275.00 Single Room
Payment	\$800.00 upon booking, balance due by Monday 13 th January
Price includes	Door to door transport, accommodation x8, breakfast x8, morning tea x4, lunch x6, afternoon tea, dinner x8, ferry crossing



There are many parallels between the European settlement of Canterbury and that of Hawke's Bay with significant numbers of settlers starting to arrive into both areas in the 1850s. And whilst Hawke's Bay's early settlement was, like much of the North Island at this time, a rather haphazard affair, the settlement of Canterbury was a much more planned enterprise. Fortunes were made

and, as a consequence, grand houses were built and gardens created. On this tour we will visit a number of these properties, most of which are now much reduced in acreage, with some still in the hands of the same settler families and others benefiting from the enthusiastic care of new owners. Our visits over this **9 Day** tour will span from the Hurunui district in the very north of the province, to Geraldine at the southern end of the great plains. Most of these properties will be first-time visits for **Bay Tours** and we're very excited to be given access to them. Here's a summary of the itinerary;

Day 1: We depart Hawke's Bay and head to Wellington where we overnight at our favourite **Copthorne Oriental Bay Hotel** before our Interislander ferry to Picton the following morning.

Day 2: After our morning ferry we head south on SH1 to **Kaikoura** where we overnight in the new, sparkly **Sudima Hotel** with dinner at the newly refurbished Pier Hotel.

Day 3: Today we take the Inland Road through Mt Lyford to the town of **Waiau** and our first historic property – **Lyndon**. Begun in 1880, Lyndon homestead was the centre of a 70,000 acre sheep run. In 2018 Jude Flintoft and Steve Smith purchased the derelict homestead and set about restoring the house, and in doing so honouring the original craftsmanship achieving detailed work using hand tools only. Today Jude will host us for a cuppa and show us around the homestead and the progress made on the gardens to date. We then head to another property just down the road in **Rotherham** where Doreen and Mike Dryden have created one of the great gardens of North Canterbury at **Loch Leven**. Doreen will put on lunch for us and show us around this stunning garden. In the afternoon we continue south into the **Hororata** area to one of the oldest homesteads still remaining in Canterbury – **Terrace Station**. Kate Foster, great grand-daughter of the station founder John Hall, will meet us and tell us all about the homestead and gardens which she and her late husband have put into a charitable trust. Tonight we stay in **Methven**.

Day 4: The story of the Hall family continues this morning as we visit another homestead built by the family in 1912 as part of the huge



Terrace Station – **Gunyah**. We'll have morning tea here whilst the owners tell us about its own history before showing us around. From here we head south into the foothills around Mt Somers where our first stop is **Rangiatea**, a hill country farm where Sara & Blair Gallagher have a stunning garden and Sara has created a range of jewellery featuring Agate quartz mined on the property. Sara will show us around the property and we'll be able to look through her gallery. Just down the road we visit another Sara, this time it's Sara Grigg at **Surrey Hills Station**. The Grigg family have a huge farming history in Mid-Canterbury and Sara will tell us all about it as we wander the beautiful woodland garden. For the next 3 nights we stay in **Ashburton**.

Day 5: Today is special as we get to visit with Rose & John Acland at **Mount Peel Station** up the Rangitata River. Not only is there the 1865 homestead and beautiful gardens, but the exquisite family stone church is another must see. Rose is originally a Nelson from Hawke's Bay and John's grandmother was an Ormond from Wallingford. So, lots to talk about here. After lunch we travel south across the Orari River to **Orari Gorge Station**. Wintering 25,000 head of stock, the station has been in the same family for 170 years and is currently home to the 4th, 5th & 6th generations. Our host, Rosa Peacock's great-grandfather settled the property in 1856. Rosa will tell us all about the history and guide us around the many restored 19th century farm buildings, the homestead and gardens.

Day 6: This morning we'll head to **Geraldine** for a little free time to wander the excellent



Farmer's Market in the churchyard, maybe check out the wonderful rose garden in the Domain or just settle down with a cuppa in a café. In the late morning we turn towards the coastal plains and **Akaunui**, a homestead and farm that was originally part of the massive Longbeach Estate owned by the Grigg family, but has long been in the family of our hosts today, Di and Ian MacKenzie. They will host us for a classic farm lunch created largely from produce on the property before

showing us around parts of their magnificent 30 (yes, that's right) acre garden. Our last destination of the day is a property that was originally part of the enormous Ashburton Run but, since 1877 has been called **Coniston**. The 1918 homestead is surrounded by 6 acres of woodland, lake & formal gardens and our hosts, Carol and Donald Williamson, will welcome us and show us around.

Day 7: We begin our homeward journey today, but we couldn't leave Canterbury without a visit to the original seat of the pre-eminent Deans family, **Riccarton House**. Built in stages from 1856, the house is truly magnificent and we'll enjoy a guided tour of the house and grounds before we have lunch here. Then we're on the road in the afternoon and return to **Kaikoura** for the night.

Day 8: We wend our way up the Marlborough coast to the outskirts of **Blenheim** to **Welton House** where owner Wendy Palmer and her garden designer brother, Ross, have created something special. Wendy lives in the 1901 homestead with her daughter Maia and will show us around and give us lunch before we head to Picton and our afternoon ferry. We overnight in **Wellington** tonight.

Day 9: We make our way back to Hawke's Bay today, via **Palmerston North** where there will be time for lunch and no doubt shopping, before we head home.

This tour encompasses 12 properties and more importantly we'll meet some amazing people. Some are custodians of their familys' rich history in Canterbury, others having lovingly restored landmark properties to their former glory. And all with a strong desire to preserve a physical presence of past generations. Come and be part of this wonderful exploration of some of Canterbury's finest heritage properties.

Tour No. 226 Lake Waikaremoana

Date	Wednesday 26 th February
Times	All collected by 7.50am
Cost	Patron: \$165.00 Member: \$195.00
Payment	Full payment upon booking please
Price includes	Door to door transport, morning tea, lunch

There's something magical about **Lake Waikaremoana**. It seems at the same time familiar and inaccessible. One of the wonderful playgrounds for generations of Hawke's Bay people, recent climatic and other events have made it less visited than in the past. On this trip we'll take a picnic lunch, pack up the chairs and head for beautiful



Onepoto Bay on the lake. And what better time of the year to visit than high summer. On the way we'll enjoy a morning cuppa – and the views – at the spectacular **Mohaka Viaduct** and stop off for a photo stop at the isolated **Tuai Power Station** as well. Come and enjoy a day in the northern Hawke's Bay back country.

Tour No. 301 Martinborough Fair

Date	Saturday 1 st March
Times	All collected by 6.45am
Cost	Patron: \$140.00 Member: \$160.00
Payment	Full payment upon booking please
Price includes	Door to door transport, morning tea



The Rotary **Martinborough Fair** is held in the picturesque Martinborough Square. This iconic fair, reportedly the largest in Australasia, comprises over **480 stalls** selling artwork, crafts, clothing, food and other quality products. This day trip is one of our most popular year after year and as usual, it'll be an early start in order to provide as much time in **Martinborough** as possible. We'll stop for morning tea on the way and plan to **arrive around 11.30am**. There'll be

plenty of time to wander at your leisure (and plenty of space on the coach to stash your goodies). We'll **depart by 3.00pm** and head home, stopping at Woodville Domain to eat what you have purchased from the fair for dinner before the last leg of the journey. This is the fair everyone talks about so come and experience it for yourself.

Tour No. 328

Great Barrier Island Escape

Date	Friday 28 th March – Tuesday 1 st April
Times	All collected by 7.15am
Cost	Patron: \$3,785.00 Twin Share \$4,485.00 Single Room Member: \$4,165.00 Twin Share \$4,935.00 Single Room
Payment	\$1000.00 upon booking, balance due by Thursday 30 th January
Price includes	Door to door transport, accommodation x4, breakfast x4, morning tea x3, lunch x4, afternoon tea x2, dinner x4, all flights

Without a doubt the jewel in the crown of the beautiful Hauraki Gulf is **Great Barrier Island**. This almost mystical place, 100km northeast of central Auckland, has always seemed so far away and 'other-worldly' and yet, always part of the New Zealand idyll.



These days it's easier to get there than ever before. So, we're returning to 'the Barrier' to spend time, over **5 Days**, with the locals to experience one of New Zealand's last untouched paradises. This time will allow us to enjoy everything at 'Island pace'.

Here's a glimpse at what's in store;

We fly first to **Auckland** and then on to **Great Barrier Island** itself. Enjoying spectacular views of the Hauraki Gulf and Waiheke Island before landing at **Claris** and being met by our host, Leigh, who'll be showing us around.

Over the next few days we'll enjoy a wonderful series of spectacular, scenic destinations like **Medlands Beach**, **The Windy Canyon**, **Pacific Ocean Panoramas** and the 'Forgotten Wharf' at **Blind Bay**. We'll meet the locals and hear the stories at community spots such as **Tryphena Wharf**, **Shoal Bay Estate**, **The Barrier Social Club** and **Jacque's Haven**.



We'll take a cruise aboard the launch '**Sundancer**' up the island's west coast past old Kauri sawmills and deserted whaling stations, then head through the spectacular **Broken Isles** and **Man-O'-War Passage**. At **Port Fitzroy** we'll disembark and visit the amazing **Glenfern Sanctuary**, a predator-free forest, where we'll be guided around their native plant and bird reintroduction facilities and up to **Sunset Rock** for jaw-dropping panoramic views of **Port Fitzroy Harbour** itself.

How about a walk along a gentle forest track bound by ancient **Nikau Palms** to **Hot Springs**

for a soak? Visit **Okupu Beach** to see some truly ancient Pohutakawa trees and take a look around an organic farm known as **Okiwi Passion**. Sharing a meal with friends is an occasion to be revered and enjoyed on 'the Barrier' too. Orla at **Currach Irish Pub** and Steve at **Mulberry Grove Store & Café** are examples of locals whose larger-than-life personalities are reflected in their hospitality. All this whilst staying at Leigh's own **Sunset Waterfront Lodge**, just a few metres from the water's edge in Shoal Bay.

For many, a trip to **Great Barrier Island** is a 'bucket-list' item. The opportunity to visit this iconic maritime region of New Zealand is rare. This is the chance you've been waiting for, encompassing all the levels of Bay Tours service you've come to expect.

Join us for an unforgettable odyssey around this island wonderland.

We're also running this tour on Wed 30th Oct – Sun 3rd Nov AND Wed 13th – Sun 17th Nov 2024. Both of these dates are currently fully booked; however if either of these dates work better for you, we recommend putting your name on the waitlist in case a spot becomes available.

Tour No. 407

Molesworth & Rainbow Stations & More

Date	Monday 7 th – Friday 11 th April
Times	All collected by 8am
Cost	Patron: \$3,365.00 Twin Share \$3,725.00 Single Room Member: \$3,720.00 Twin Share \$4,110.00 Single Room
Payment	\$800.00 upon booking, balance due by Monday 3 rd February
Price includes	Door to door transport, accommodation x4, breakfast x4, morning tea x4, lunch x3, dinner x4, flights

The experience of driving through New Zealand's largest farm – nearly 450,000 acres spanning a good part of the upper South Island – is a kiwi rite of passage. The stunning scale and rugged beauty of **Molesworth Station** together with another neighbouring giant, **Rainbow Station** with its latticework of pristine lakes, is contrasted by the alpine tranquillity of the village of **Hanmer Springs** where we'll be based. Here's a summary;



Day 1: We depart Hawke's Bay Airport this morning and head for **Christchurch**. There we'll be met by our local guide, who will collect us from the airport, and we'll drive north to **Woodchester Station**, near the epicentre of the 2016 'Kaikoura' earthquake. Here the Kelly family will host us for lunch and show us some astonishing evidence of nature's power which has transformed their lives forever. Later in the afternoon we make our way to **Hanmer Springs** and our superb centrally located base, the cozy **Drifter's Inn**.



Day 2: Today we're collected by our guide in a special 4WD mini-coach and we head into **Molesworth Station**. We'll visit iconic points on the massive station with its 150yo cob buildings and thousands of acres of rippling clover and tussock grass. Cattle share the sides of the sparkling rivers with Canada Geese and Paradise Ducks. It's difficult to prepare yourself for the sheer vastness and beauty of the place. A day heavy with memorable moments.

Day 3: After a big day yesterday, time to relax with a **FREE DAY** in Hanmer Springs today.

Day 4: Today we head west up through the former **St James Station** and into the Spenser Range to **Lake Tennyson**. We'll drive over **Island Pass**, the highest in the country at 1300 metres, before descending into **Rainbow Station** itself – wintering both cattle & sheep - remarkable for its transitioning alpine landscapes and climate. What a contrast.

Day 5: We depart Hanmer Springs this morning and make our way back to **Christchurch Airport** but not before a visit to **Iron Ridge Sculpture Park**, a former limestone quarry, transformed into a huge stunning outdoor exhibition space like no other. Then it is on to the airport where, after a late lunch, we catch our flight back to 'the Bay'.

Molesworth, Rainbow and **Woodchester Stations** make up a land truly alive with the evocative atmosphere of stockmen and shepherds, dogs and drovers, slough hats and well-worn saddles. It's a landscape of extremes and of the real cowboy, even today, and what an adventure it is to get a glimpse of their way of life and to meet some of the people continuing the legacy.

Places on this tour are extremely limited so do not hesitate in securing your spot.

Tour No. 407A Otago's Old Gold Road

Date	Monday 7 th – Wednesday 16 th April
Times	All collected by 10.45am
Cost	Patron: \$7,755.00 Twin Share \$9,235.00 Single Room Member: \$8,595.00 Twin Share \$9,455.00 Single Room
Payment	\$1,000.00 upon booking, balance due by Monday 10 th February
Price includes	Door to door transport, accommodation x8, breakfast x8, morning tea x4, lunch x3, dinner x8, flights

New Zealand experienced its first gold rush after Gabriel Reid made his discovery near what is now the town of Lawrence in Central Otago in 1861. Two years later there were 22,000 people living in the gold fields strewn from Arrowtown to Dunedin. William Rees had barely established his sheep farm on the shores of Lake Wakatipu when gold was found in the Arrow River and within a few months the area around his homestead became the thriving town of Queenstown. Because of gold Dunedin was, by then, the largest and wealthiest city in the country. Places like St Bathans, Naseby, Middlemarch and Lawrence owe their foundations to the rush to find the shiny stuff. These days gold has been replaced by agriculture, horticulture and tourism. In April 2025 we'll spend **9 days** travelling these roads and experiencing these places for what they are today. A route that will broadly take us from the mountain peaks that surround the resort town of **Queenstown** to the university city of **Dunedin** on the coast and so many places in between. Here's a summary of the plan;



Day 1: We fly from Hawke's Bay to **Queenstown**, where we'll be met by our Bay Tours coach, and settle into the **Novotel Queenstown Lakeside Hotel**, our home for the next 4 nights.

Day 2: This morning we take the infamous Cardrona Road to **Wanaka** for a morning cruise on the lake. After lunch in Wanaka, we head to **Cromwell** for a look around before returning to **Queenstown**. Tonight, we dine at the legendary **Skyline Restaurant**.



Day 3: After morning tea at the luxurious **Millbrook Resort** we spend some time exploring picturesque **Arrowtown** with its historic tree-lined streets in all their autumnal splendour. This evening, we have a very special dinner experience. We cross **Lake Wakatipu** on the legendary **TSS Earnslaw** for a delicious Gourmet BBQ dinner at **Walter**

Peak Station.

Day 4: Today is a big one. We start by a drive to **Glenorchy** at the top of the lake's northern arm. From here we'll explore the mystical **Dart River** by jet boat. The Dart is a braided river, the very kind that jet boats were built for. After a stunning river ride deep into the heart of **Mount Aspiring National Park**, we'll tie up and take a brief walk amongst the ancient beech tree forests – a world apart. The return jet boat ride down the river back to Glenorchy is an adrenalin-filled rush as we skim across the shallowest of

water channels. Phew! We head back to town for lunch and some free time to relax in **Queenstown** in the afternoon.

Day 5: Our ultimate destination today is **Ranfurly** deep in the Maniototo but not before we've firstly stopped for a morning cuppa at the old Post Office in **Clyde** and a look at the mighty **Clyde Dam** and power station. Then it's on to **St Bathans** and the historic **Vulcan Hotel**, for lunch. This afternoon we settle into the lovely **Hawkdun Lodge** in **Ranfurly**.

Day 6: Another day packed with action. Our first stop is **Naseby** and a crack at the most distinct of southern sports, curling, at the **International Curling Centre**. Local experts will on hand to help us get those stones moving. And if you think those stones are big, a wonderfully scenic drive to the coast will bring us to our next destination, the famous **Moeraki Boulders**. These massive spherical concretions are up to 60 million years old. After lunch we take the scenic drive to **Dunedin** and the wonderful **Distinction Hotel**.



Day 7: Our first day in Dunedin begins with a visit to the **Royal Albatross Centre** out at the heads of Dunedin Harbour where, after morning tea, we'll be shown around and have the chance to observe these majestic birds. Then it's on to perhaps Dunedin's most famous landmark – **Larnach Castle**. After a guided tour we'll enjoy lunch in the ballroom and a wander in the glorious gardens before returning to the city where

the rest of the afternoon is free to relax in our beautiful hotel and put our feet up.

Day 8: We stick close to town today visiting a number of wonderful places. There's the grandeur of the historic house, **Olveston** where we'll explore this extraordinary property bequeathed to the city of Dunedin. After lunch we'll head to the brilliant **Otago Settlers Museum** and wander next door to look at the newly restored **Dunedin Railway Station**. There's a lot to take in around town today.

Day 9: After a jam-packed 8 days you'll be pleased to have a **FREE DAY** to relax or wander central Dunedin at your leisure. Maybe catch up with local friends or family.

Day 10: We say farewell to the South today and fly home from Dunedin to **Hawke's Bay**. Spectacular sights, amazing once-in-a-lifetime experiences and, above all, that fabulous southern hospitality. Join us on this memorable journey from Otago's gold rush past to its exciting present.

Tour No. 523

Bluff Oyster & Food Festival

Date	Friday 23 rd – Monday 26 th May
Times	All collected by 10.30am
Cost	Patron: \$2,695.00 Twin Share \$2,995.00 Single Room Member: \$2,995.00 Twin Share \$3,295.00 Single Room
Payment	\$1000.00 upon booking, balance due Thursday 20 th February
Price includes	Door to door transport, accommodation x3, breakfast x3, lunch, dinner x3, festival ticket, flights

One of the most iconic celebrations of all thing's seafood is the annual **Bluff Oyster & Food Festival**. But the festival is about much more than just the humble oyster. All manner of seafood and other 'wild' foods are celebrated and presented in ways you never dreamed about. So much of the southern economy is tied into the sea and we're going to celebrate with the locals in 2025.

Day 1: First day of our adventure we'll fly from Hawke's Bay to **Invercargill** and settle into our accommodation at the **Ascot Park Hotel**.



Day 2: Today is the day of the **Bluff Oyster & Food Festival** itself. Imagine an abundance of oysters (surprise, surprise), pāua, salmon, blue cod, mussels, crayfish and whitebait. Add local wild venison, muttonbird, wild pork and escargot (yep, that's snails!) and this is a festive feast like no other. We'll transport you to and from the festival grounds.

Day 3: We visit **Transport World** in the morning. This temple of transport pays homage to all manner of motor vehicle and a lot else besides. It's absolutely world-class in its scale and presentation and there's definitely something here for everyone. After lunch at their café your afternoon is free time. Perhaps a walk through beautiful **Queens Park** or check out the shops at Invercargill's new mall – **Invercargill Central**. There's certainly plenty to see and do in this most southern city in the world.

Day 4: We make our way home after a superb weekend in the deep south. The **Bluff Oyster Festival** celebrates all things Kiwi and is an event not to be missed. Places are limited so book now.

Our own born and bred Southlander and oyster fanatic, Ken, now living in exile here in Hawke's Bay, will lead this tour into his native patch.

Tour No. 617 TranzAlpine

Date	Tuesday 17 th – Monday 23 rd June
Times	All collected by 8.15am
Cost	Patron: \$3,955.00 Twin Share \$4,650.00 Single Room Member: \$4,355.00 Twin Share \$5,115.00 Single Room
Payment	\$800.00 upon booking, balance due by Tuesday 22 nd April
Price includes	Door to door transport, accommodation x6, breakfast x6, morning tea x3, lunch x3, dinner x5, ferry crossing

For a number of years now one of the 'must do' experiences for both international and local travellers alike, has been the scenic train trip from **Christchurch** through **Arthurs Pass**, across the **Southern Alps** and into **Greymouth** in the heart of the West Coast. Hailed by many as one of the great train journeys of the world, the **TranzAlpine** delivers an unbeatable range of scenery whilst travelling in rail luxury. In the crystal-clear June air, the vistas of the **Canterbury Plains**, **Waimakariri River** and the snow-clad **Southern Alps** will be truly spectacular, and on many people's 'Bucket List'.



We'll travel by coach to **Wellington** & take the Interislander ferry to Picton. From here we follow the scenic **Coastal Pacific Highway** to **Kaikoura** and then on to **Christchurch**. A **FREE DAY** in the 'Garden City' will be a chance to see the sights and perhaps catch up with local family or friends. The spectacular views on this rail journey, from east to west,

are complimented by superb service aboard the train and a delicious lunch. Together with the staff's expert commentary and an 'open carriage' for perfect photos, you won't miss a thing. Once on the **West Coast**, we'll spend time visiting natural wonders such as the breath-taking **Hokitika Gorge** and



Punakaiki Pancake Rocks together with historic emblems of the coasts' past like the amazing **Denniston Incline** and the old forest railway into the **Paparoa National Park**. We return northward through the beautiful **Buller** and **Tasman** districts before crossing the Cook Strait once more and back to the Bay.

This is one of the most visually stunning tours we have taken. With a combination of city and country, coach, ferry and train, alpine and coastal landscapes, this is a trip that will create images for a lifetime. For a full itinerary, please contact the office or email Kaye at support@baytours.co.nz



Tour No. 715

A Winter Escape to Rarotonga

Date	Tuesday 15 th – Thursday 24 th July 2025
Times	All collected by 2.10pm
Cost	Patron: \$7,825.00 Twin Share \$9,645.00 Single Room Member: \$8,595.00 Twin Share \$10,595.00 Single Room
Payment	\$1,500 upon booking, balance due by Tuesday 20 th May
Price includes	Door to door transport, accommodation x9, breakfast x9, lunch x4, dinner x8, flights



In July 2025 we're going to enjoy a revitalising break in beautiful **Rarotonga** with a mix of island activities and pure relaxation as we soak up the warmth of both the weather and the local hospitality – including a day spent on the legendary **Aitutaki Lagoon**. The tempo of this tour is slower than our usual Bay Tours pace, as befits a tropical paradise. There will usually be FREE time at our resort each day – often in the afternoon – for you to simply relax at your own pace. We reckon this sort of restorative break should be on a health plan.

Our **Rarotonga** home will be the wonderful **Edgewater Resort & Spa** where their Beachfront Deluxe suites look straight onto the beach. The timing of our visit coincides with the Humpback Whale migration season and the resort's west coast location is ideal for observing these massive creatures playing a couple of hundred metres off the beach. Early on in the trip we'll enjoy an **Island Discovery Tour** with local guides, highlighting various landmarks, to help orientate ourselves. A visit to a **local primary school** is a hugely popular and moving part of each Rarotonga tour. Here senior students will proudly show us around their school and perform traditional songs for us. A day spent visiting magnificent **Aitutaki** is without doubt another highlight. You'll be lost for words as you view the most perfect turquoise lagoon you've ever seen. We'll sail across this vast lagoon and around the various tiny islands amidst crystal-clear waters, following the Green Turtles that swim there. It's always fun visiting the various regular weekly **markets** around **Rarotonga** and another wonderful experience is a **progressive dinner** hosted by locals in their homes. Glorious garden visits and stunning **waterfront dinner locations** are other features of this tour. But the overarching theme of this winter escape is relaxation in the warmth of **Rarotonga** which will lift the spirit and enrich the soul. Come and say "Kia Orana!" to this magical place. For a full itinerary please call Kaye at the office or email her at support@baytours.co.nz

Tour No. 803

Exploring Fiordlands Finest

Date	Sunday 3 rd – Sunday 10 th August
Times	All collected by 9.15am
Cost	Patron: \$10,375.00 Twin Share Salvin Cabin, \$11,825.00 Twin Share Royal Cabin, \$10,675.00 Single Wandering Member: \$11,425.00 Twin Share Salvin Cabin, \$11,995.00 Twin Share Royal Cabin, \$11,745.00 Single Wandering
Payment	\$2500.00 upon booking, balance due Friday 25 th April
Price includes	Door to door transport, accommodation x7, breakfast x7, dinner x2, cruise incl drinks package and all meals onboard, flights



Bay Tours invite you to discover the primordial majesty of Fiordland's iconic **Dusky & Doubtful Sounds** on an unforgettable 6-day exploration cruise in August 2025. Limited to just 18 participants, this cruise will make for a unique encounter with our natural world. Only accessible by sea, Dusky & Doubtful Sounds are among the most isolated areas on New Zealand's mainland, ensuring their pristine, epic beauty remains unspoiled

and their historic sites undisturbed. Waterfalls, streams, rivers and fiords are enveloped with misty veils that come and go, revealing steep gradients of mountain peaks and sheltered valleys. Wildlife including unique pods of Bottlenose Dolphins, Fiordland Crested Penguins and New Zealand Fur Seals abound. Discover the calm waters of Fiordland in solitude and explore some of its most unique and wild parts on this bucket list voyage aboard the 30 metre, 4 deck, New Zealand built luxury launch **Heritage Explorer**. With daily opportunities to board the launch's smaller tender boats to explore the shore on foot, this is far more than just a cruise with scenery to be admired from afar. This is close-up!

Day 1: Hawke's Bay to Te Anau After you're collected from home, we all meet at Hawke's Bay Airport and board our mid-morning flight to **Queenstown**, arriving early afternoon. We then transfer to **Te Anau** and our hotel for the night in anticipation of the start of our adventure tomorrow.

Day 2: Te Anau/Dusky Sound Setting out from Te Anau, we enjoy the grand views and awe-inspiring scenery on a spectacular helicopter transfer to Supper Cove at the head of **Dusky Sound**. The Captain, Expedition Leader and the rest of the crew will be waiting to welcome you aboard the luxury launch *Heritage Explorer* and show you to your cabin. Settle into life aboard before we set sail along the scenic waterways of Dusky Sound, finding a suitable anchorage to enjoy your first evening aboard.

Days 3 & 4: Dusky Sound We have two days to explore Dusky Sound, Fiordland's largest. Here we have the opportunity to visit Luncheon Cove on Anchor Island, where the first European boat was built in New Zealand. Take a short walk or explore along the coastline and be amazed by the birdlife, with South Island Saddleback, Robins, Yellowhead and Parakeets in abundance on the island thanks to its predator free status. It was on nearby Pigeon Island pioneering conservationist Richard Henry was based during his time in Dusky Sound. At Astronomers Point there may be the opportunity to walk in the footsteps of



At Astronomers Point there may be the opportunity to walk in the footsteps of

Captain Cook and his astronomer, William Wales. It was here that Cook's ship, Resolution, was moored during their time in Dusky Sound. Our cruise through this enchanting sound visits some of New Zealand's most significant historic and conservation sites, as well as offering an exploration of some of the country's most majestic scenery as we sail deep into the heart of Fiordland. Be sure to be on the lookout for some of the abundant marine life that occurs here including New Zealand Fur Seals and Bottlenose Dolphins.

Day 5: Acheron Passage & Breaksea Sound At the northern side of Dusky Sound we enter Acheron Passage. Separated from the mainland by this scenic waterway we find Resolution Island – one of the world's first conservation sanctuaries and the largest island in Fiordland. Our time here may include venturing into Wet Jacket Arm where the crew of Cook's Resolution ended up with wet jackets during their survey work. It is also the site where Moose were released, and last seen, in New Zealand. During the afternoon we explore the waters of Breaksea Sound where you might like to join the chef fishing for tonight's dinner or take the kayaks for a shoreline exploration.



Day 6: Breaksea & Doubtful Sounds

After a quiet night aboard surrounded by the nature and wilderness of Breaksea Sound, join your naturalists on deck to spot seabirds including the majestic Wandering and Buller's Albatross as we pass Breaksea Island, which guards the entrance to Breaksea Sound. It was on Breaksea Island that the first successful island rat eradication program was completed. Today it is a protected nature reserve of great significance to the many endangered species which call the island

home. From here we sail onwards towards some of the most spectacular scenery in all of Fiordland – Doubtful Sound, or the sound of silence as it's also known. Spanning some staggering 40-kilometres and holding the title as New Zealand's deepest fiord, Doubtful Sound with its cloud-scraping wilderness cloaked mountains, sheer cliffs, waterfalls, inlets, quiet coves and wildlife presents nature on a scale so grand it's off the chart. Tonight, we enjoy a cruise farewell dinner.

Day 7: Doubtful Sound/Te Anau/Queenstown Enjoy a farewell breakfast on board *Heritage Explorer*, among the grandeur of Fiordland, before farewelling our Captain & crew and travelling over the Wilmot Pass and across Lake Manapouri back to **Te Anau**. A relaxed afternoon transfer back to **Queenstown** will see us arrive at the **Heritage Hotel** on the shores of Lake Wakatipu. Tonight, we enjoy a tour farewell dinner with a last chance to compare experiences and memories of the last week.

Day 8: Queenstown to Hawke's Bay A gentle start to the day sees us arrive at Queenstown Airport late morning before beginning our flight homeward arriving back in the Bay late in the afternoon.

We have limited Single, Twin Share and Double cabins available, so find a buddy and book for one of the most amazing experiences ever. But don't delay, our 2022 & 2023 dates for this cruise sold out very quickly.



Kerren's Whisper

It seems the timing of announcements of big international shows and concerts haven't quite synced with our Leisure Guide publishing deadlines over the last couple of years. But don't worry, when shows or concerts in Auckland or Wellington are announced, that we think members would enjoy, we'll put something together and get an email out to you. That's why it pays to make sure we have your email address.

We're currently working on an in depth 7 Day exploration of the **Marlborough Sounds**, for **November 2025**, aboard *Heritage Explorer*, the same wonderful vessel that is the centre of our superb *Exploring Fiordlands' Finest* tour. If you'd like to register your interest in this small group expedition, please email Kaye on support@baytours.co.nz

Another tour on the horizon is the incomparable **Hurunui Garden Festival** in late **October 2025**. Over the last few years, we've cultivated (see what I did there?) many great contacts in the North Canterbury area and the organisers have specifically invited Bay Tours to bring a group to this superb celebration of gardens next year. The dates also coincide with the renowned **Hanmer Springs Christmas Fete** which we'll also include in the itinerary so look out for that.

I recently had a thoroughly enjoyable evening at a performance of '*Heathers - The Musical*' by **Theatre Hawke's Bay** at their excellent Hastings premises. Not only was the performance superb, but the hospitality and atmosphere before and in the interval was wonderful. Their next production, in November this year, will be '*Little Miss Sunshine*', a musical based on the hilarious 2006 movie about a dysfunctional family taking the youngest daughter to a child beauty pageant. I know this will be a huge hit with audiences. We are seeking expressions of interests in this and if there is sufficient, we'll put together a trip to one of the performances.

Please call Kayley at the office or email her at tourclub@baytours.co.nz to register.

NEXT LEISURE GUIDE WILL BE RELEASED IN DECEMBER

**Unsubscribe: If you no longer wish to receive this Leisure Guide
Please contact us and we will remove you from our database.**

**Ph: (06) 845 2736 EXT 1 for Tour Club or Email your
Tour Club Co-ordinator Kayley at tourclub@baytours.co.nz
www.baytours.co.nz**



All Post to:

PO Box 12221
Ahuriri, Napier 4144