

# TOUR CLUB LEISURE GUIDE

Issue No. 26  
2025-2026



[tourclub@baytours.co.nz](mailto:tourclub@baytours.co.nz) | 06 845 2736 (ext. 1)  
[www.seniorguidedtours.co.nz](http://www.seniorguidedtours.co.nz)



# Welcome to Bay Tours & Charters

## Leisure Guide



Hello again to all our wonderful Tour Club members and welcome to the latest edition of our **Leisure Guide**. You will find within these pages the pathway (or at least one of them, we think) to your happiness over the next 6 months and beyond. Over this first half of 2025 we've had some wonderful trips and tours away. In February we enjoyed stunning South Island summer weather as we visited Canterbury Homesteads & Gardens. And we enjoyed still sunny weather, as

only Wellington can, for our exploration of our capital city in May. Speaking of warm weather, our Pacific Islands cruise was a highlight of last summer and we're delighted that our trip to Sydney in July for the 'Book Of Mormon' show is a sellout. The group who went for dinner in February at **High St Bistro** in Dannevirke raved so much about it, we've persuaded the owners to open especially for lunch for us in September, so look out for that inside here. On the personal front, many of you will know that our four sons are scattered across the world. And whilst modern technology makes regular contact much easier these days, there's no substitute for face-to-face family time. So, Ken and I have decided to spend Christmas 2025 with family and that will, I'm afraid, mean the Christmas Mystery tour won't happen this year.

As far as new and upcoming tours in this edition are concerned, look out for our overnight trip to Auckland in September for the stage production of '**Priscilla, Queen Of The Desert**'. Anyone who's seen the movie will know what a hilarious romp that will be. Look out, too, for **Cross Country Back Roads** in Spring. Ken has been plotting routes again and this one's a cracker! We're very proud to be part of a new fundraising event happening later this year. **Hawke's Bay Garden Affair** is raising funds for Riding For The Disabled Hawke's Bay. Nearly 30 mostly private gardens will open for ticketholders across three days in November and we have selected what we think are the best 15 gardens and we'll be visiting them over 2 days. That will be super popular. Much-loved tours returning in this edition include **Kapiti & Mātīu Somes Islands** in December, **The Bridge To Nowhere** in January, **South Of The South** which will traverse the lower part of the South Island in February, **West Coast Experience** in March and **Back Country Stations** which will visit some amazing farming operations around the Gisborne area in April 2026. And a late addition to our plans will be overnight trips to Auckland for each of the 3 nights of **The Royal Edinburgh Military Tattoo** in February, returning to NZ for the first time in a decade. A certain someone in our team, cannot wait!

Coming up on the international front in this edition, look out for an encore of **Exploring Tasmania** in March, where we'll experience a wonderful cross-section of what that special place has to offer. And take a look at '**Kerren's Whisper**' in this edition, firstly for news of another fantastic multi-faceted tour in Australia that's on the horizon. And, secondly, for a tour in November 2026 to a northern Pacific country renowned for its tea ceremony and fat wrestlers. All this, and so many more, new and returning favourite trips and tours are inside here and Ken & I are very proud of the breadth and quality of the experiences in this Leisure Guide.

As always, we're so very grateful for the ongoing support we receive from members and, on behalf of all the Bay Tours family, we thank you and we look forward to sharing some of these experiences with you over the rest of 2025 and beyond.

**Cover Photo (overleaf): Mt Peel Station Feb 2025**

**Kerren & Ken Withington**

# General Information

## Payments:

**Credit card:** We accept credit card payments by Visa or MasterCard but there is a 2% credit card handling fee. To avoid incurring this bank cost you can pay by;

**Cash or internet banking;** Internet banking, please place the **tour number with the first 4 letters of your surname in the reference field e.g. 101425WITH**. If you are paying for more than one tour, please place the other tour number/s in the code field. If you are paying your patron fee in the same payment, please write PATRON in the particulars field.

This also applies if you visit a Kiwibank branch to make an over-the-counter deposit. You MUST highlight your reference details on your deposit slip to the teller to ensure they key them in for your transaction.

**Account Name: Bay Tours & Charters (2012) Limited**

**Account Number: 38-9014-0316437-00**

## Dietary Requirements:

If you have any dietary requirements, please bring this to our attention when you are booking your trip to enable us to accommodate your needs.

## Accommodation Preferences:

If you wish to have a hotel room on a lower level or if you prefer two beds instead of a double, please let us know at the time of booking so we can accommodate your needs.



## Mobility Checkpoint:

Some tours which have an aspect to them that will require a specific level of mobility will be flagged with this **RED MAN** sign: This DOESN'T necessarily mean you will be unable to participate. We simply ask that you call the office to discuss the specific requirement.

## Kaye & Kayley - Your Tour Club Co-ordinators



All our tours include door to door transport from urban areas in Hawkes Bay. If you live rurally, we can discuss an alternative pick up point. For our members who live in CHB, if the tour is going through your hometown, we can pick you up on the way, otherwise you are welcome to park your car in our yard in Onekawa for the duration of the tour.

Please make sure you note down final payment due dates on your calendar or diary as we do not send payment reminders or invoices. This can be found in the details section of each tour.



**Post to:**

PO Box 12221, Ahuriri, Napier 4144

**Phone us at:**

(06) 845 2736 – EXT 1

**E-Mail: Tour Co-ordinator Kayley at:**

[tourclub@baytours.co.nz](mailto:tourclub@baytours.co.nz)

**Visit us at our address:**

26 Turner Place, Onekawa, Napier 4110

# Tour Club Booking Form

Date	Tour	Tour Name	Patron	Member
Fri 18 – Sun 20 July	71825	A Mid-Winter Christmas	\$1,145	\$1,260
Tue 22 July	72225	Ken's Mystery Day Out	\$160	\$200
Fri 25 July	72525	Winter Soak & Lunch	\$175	\$205
Mon 28 Jul – Fri 1 Aug	72825	The Book of Mormon – Sydney	\$3,995	\$4,555
Sun 3 – Sun 10 Aug	80325	Exploring Fiordland's Finest	\$10,375	\$11,425
Fri 8 Aug	80825	Lunch at Pōrangahau Country Club	\$150	\$175
Thu 14 Aug	81425	Patrons Lunch at Valley D'Vine	\$75	N/A
Sat 16 – Sun 17 Aug	81625	Mamma Mia Musical – Wellington	\$695	\$775
Thu 21 Aug	82125	Exploring Eketāhuna	\$175	\$215
Tue 26 Aug	82625	Winter Pub Lunch & Quiz	\$150	\$175
Thu 28 Aug	82825	Dinner at Mangapapa	\$170	\$185
Sun 31 Aug	83125	Creedence Clearwater Collective – Napier	\$210	\$235
Tue 2 Sep	90225	A Visit to the National Army Museum	\$175	\$210
Thu 4 – Fri 12 Sep	90425	Cruise Fiji's Yasawa Islands	\$6,555	\$7,215
Sat 13 – Sun 14 Sep	91325	Priscilla Queen of the Desert – Auckland	\$795	\$895
Tue 16 Sep	91625	Craggy Range Sheep Dairy & Lunch	\$195	\$220
Thu 18 Sep	91825	Lunch at High St Bistro – Dannevirke	\$175	\$195
Sat 20 – Sun 21 Sep	92025	WOW #1 – Wellington	\$755	\$835
Thu 25 Sep	92525	Garden to Vase with Foraged & Found	\$295	\$330
Fri 26 Sep	92625	Lunch at Elephant Hill	\$160	\$190
Sat 27 – Sun 28 Sep	92725	WOW #2 – Wellington	\$755	\$835
Mon 29 – Tue 30 Sep	92925	Cross Country Back Roads	\$675	\$775
Thu 2 Oct	100225	Christmas Barn & Banquet	\$220	\$250
Fri 3 Oct	100325	Matilda the Musical – Dinner & Show	\$250	\$280
Mon 6 – Fri 10 Oct	100625	Molesworth & Rainbow Stations & More	\$3,485	\$3,850
Thu 9 – Sat 18 Oct	100925	North of the North	\$4,755	\$4,995
Sat 18 Oct	101825	Queen: It's a Kinda Magic	\$225	\$250
Tue 21 Oct	102125	Notable Homes of Hawke's Bay	\$200	\$230
Wed 22 Oct	102225	Spring Progressive Dinner	\$165	\$190
Tue 28 Oct – Tue 4 Nov	102825	Hurunui Garden Festival	\$4,495	\$4,995
Thu 30 – Fri 31 Oct	103025	Cirque du Soleil: Corteo - Auckland	\$845	\$930
Sun 2 – Mon 3 Nov	110225	Ngā Manu Kiwi & Native Bird Encounters	\$895	\$995
Tue 4 – Fri 7 Nov	110425	Forgotten World by Rail & River	\$2,195	\$2,515
Fri 7 Nov	110725	Hawkes Bay Garden Affair #1	\$165	\$185
Sun 9 Nov	110925	Hawkes Bay Garden Affair #2	\$170	\$190
Tue 11 Nov	111125	Tina the Ultimate – Dinner & Show	\$225	\$255
Thu 13 – Tue 25 Nov	111325	The Ghan, Darwin & Adelaide	\$11,995	\$13,195
Sat 15 Nov	111525	Cross Hills Gardens Country Fair	\$205	\$230
Mon 17 – Tue 18 Nov	111725	An Evening with Cliff Richard – Wgtn	\$825	\$915
Fri 21 – Sun 23 Nov	112125	Wairarapa Garden Festival	\$1,495	\$1,695
Mon 24 Nov	112425	A Celtic Christmas – Dinner & Show	\$240	\$270
Wed 26 Nov – Mon 1 Dec	112625	Great Barrier Island Escape & Garden Festival	\$3,995	\$4,395
Thu 27 Nov	112725	Spring Country Progressive Lunch	\$140	\$170
Tue 2 – Tue 9 Dec	120225	Marlborough Sounds – An Exploration	\$9,555	\$10,590



Wed 3 – Sat 6 Dec	120325	Kapiti & Matiu/Somes Islands	\$2,095	\$2,405
Fri 5 Dec	120525	Herbs & High Tea: Weleda Garden & Mangapapa	\$180	\$210
Thu 11 Dec	121125	Patrons Lunch – No 5 Café & Larder	\$75	N/A
Thu 29 – Fri 30 Jan	12926	Chefs Table at Blue Duck Station	\$1,975	\$2,175
Fri 30 Jan – Sun 1 Feb	13026	The Bridge to Nowhere	\$1,725	\$1,925
Sun 8 – Wed 18 Feb	20826	South of the South	\$7,485	\$8,235
Thu 19 – Fri 20 Feb	21926	Edinburgh Military Tattoo – Auckland #1	\$890	\$1,005
Fri 20 – Sat 21 Feb	22026	Edinburgh Military Tattoo – Auckland #2	\$890	\$1,005
Sat 21 – Sun 22 Feb	22126	Edinburgh Military Tattoo – Auckland #3	\$890	\$1,005
Wed 25 Feb – Tue 10 Mar	22526	Exploring Tasmania	\$9,895	\$10,895
Thu 5 – Thu 12 Mar	30526	Chatham Islands including Festival Day	\$6,595	\$7,255
Sat 7 Mar	30726	Martinborough Fair	\$140	\$165
Wed 18 Mar	31826	Sparkle & Style – One for the Ladies	\$285	\$320
Thu 19 – Wed 25 Mar	31926	West Coast Experience	\$6,685	\$7,495
Wed 25 – Sun 29 Mar	32526	Great Barrier Island Escape	\$3785	\$4165
Tue 31 Mar	33126	Tuesday Temptations	\$145	\$165
Wed 8 – Sat 11 Apr	40826	Back Country Stations	\$1,685	\$1,855
Mon 27 Apr – Fri 1 May	42726	Molesworth & Rainbow Stations & More	\$3,675	\$4,015

## Tour Club

### Conditions & Important Booking Information

#### 1. Reservations & Payments

All day trips should be made in one payment at the time of booking.

For all overnight or longer tours, a deposit as stated in the Leisure Guide is payable to secure the booking. The balance must be paid in full by the declared date in the Leisure Guide.

Any customer who has booked a package with Bay Tours shall not assign, purport to assign, or attempt to re-sell the package (whether whole or in part), rights or interests under these Terms without prior consent from Bay Tours.

Any reservation made within six (6) weeks of the tour departure must be paid in full.

#### 2. Medical

Please notify us of significant medical issues when you are considering making a booking so that we can inform you of any potential risks that may present themselves as part of the tour. Bay Tours reserves the right to decline/refuse a booking because of medical concerns.

#### 3. Health & Fitness

At Bay Tours we pride ourselves on giving personal service to our customers. However, our guides are not qualified to provide individuals, who are not of reasonable, able-bodied health, the special time and attention they may need to make their tour a memorable experience. We're very happy for you to join us if you have a caregiver that can accompany you and provide help to you along the way.

#### 4. Behaviour

Bay Tours & Charters Ltd is not a common carrier and therefore reserves the right to refuse to carry or admit a person whose behaviour is considered detrimental to the enjoyment of the group. By travelling with Bay Tours & Charters Ltd the traveller agrees

to accept the authority of Bay Tours staff leading the tour and accept their decisions. Our staff are entitled to a safe working environment and our passengers to a great holiday. Any threats to safety, either physical or verbal, or inappropriate behaviour by a passenger may result in their removal from the tour. If staff require a passenger to leave a tour, no refunds will be given and the passenger will be responsible for their own travel costs from that point.

#### **5. Travel Insurance – ask us for a quote with CoverMore**

In association with Cover-More Travel Insurance we offer to members insurance against unforeseen events which may necessitate you cancelling your travel with Bay Tours. This is part of a comprehensive cover policy. It will secure your refund in the event of you having to withdraw from a booking. **We just need your date of birth in order to provide you with a quote.** There is a \$25 excess, payable for each claimable event.

- Should you decide to make use of this insurance, it must be purchased at the time you make your booking and paid in full with your tour deposit.
- Insurance Terms and Conditions apply and will be attached to your Cover-More Travel Insurance schedule which will be forwarded to you following purchase. Please ensure you take time to read through the policy wording and make yourself familiar with the cover it offers.
- Activation of your Policy by way of claim is between you as the policy holder and Cover-More NZ Ltd.

#### **6. Cancellations and Refunds**

##### **With Travel Insurance**

Should you be forced to cancel your travel with us due to a claimable unforeseen event, Bay Tours will calculate the level of direct refund we are able to make to you. You then simply complete a Cover-More claim form for the difference between the Bay Tours refund and the amount you paid for the tour. Once approved, Cover-More will reimburse you less the \$25 excess.

##### **Without Travel Insurance**

Cancellation fees without Travel Insurance with us are as follows;

##### **Multi-Day Tours**

###### **45 Days or more prior to commencement of the tour:**

Full refund, less any non-recoverable payments to suppliers of the tour eg flights, show tickets etc

###### **44 to 22 Days prior to the commencement of the tour:**

100% loss of deposit paid.

###### **21 Days or less prior to the commencement of a tour:**

100% loss of tour price paid.

If you cancel at any time, and following discussion with Kaye or Kerren, you are able to get someone to take your place, you will receive a refund of the amount paid, less an admin fee of \$250 and any non-transferable payments to suppliers e.g flights

**We strongly encourage the purchase of Travel Insurance in order to provide peace of mind that the full amount paid is protected (as per item 5 above).**

##### **Day Trips**

###### **4 Days or more prior to the Day Trip:**

Refund in full

###### **3 Days or less prior to the Day Trip:**

No refund

#### **7. Itinerary Variations**

Bay Tours & Charters Ltd reserves the right to alter the tour package (including the itinerary) and substitute accommodation facilities and/or activities to those advertised



should unforeseen circumstances beyond our control make changes necessary. The company will always endeavour, at their discretion, to select appropriate alternatives.

## **8. Tour Cancellations**

Bay Tours & Charters Ltd reserves the right to cancel or withdraw any tour or any booking made for a traveller. In this event we will refund the total tour price, but will not have any further liability.

## **9. Liability**

Bay Tours & Charters Ltd are not liable for and deny all responsibility for personal injury or property damage arising out of these activities.

The arrangement providers, namely the carriers providing land, sea or air travel, the operators providing transfers, accommodation, tours, meals and other services, all do so according to their conditions. The traveller accepts the arrangements subject to those conditions and accepts that their rights may be limited to those conditions as found in tickets, vouchers, signs, forms, contracts and the like.

The traveller has no right to claim against Bay Tours & Charters Ltd for any loss, damage, delay or injury caused to the traveller or their baggage whilst under the care or control of an arrangement provider. A traveller's baggage and personal effects shall be carried at owner's risk as provided for under the Carriage of Goods Act.

Bay Tours & Charters Ltd is not responsible for any losses or additional expenses due to delays or alterations in air, land or sea travel due to inclement weather, acts of God, strikes, breakdowns, civil unrest, quarantine, or other circumstances beyond its control.

## **10. International Tours**

It is a condition of participation in any of our international tours that New Zealand residents purchase comprehensive travel insurance from the time of booking until the completion of the tour. The insurance must include cover for lost or damaged luggage, accident or sickness, loss or theft of personal belongings and documents and the need to cancel or curtail your holiday. Please note that special conditions apply for pre-existing medical conditions with all travel insurance policies.

**You may wish to consider insuring with Cover-More NZ Ltd through Bay Tours. Ask us about it.**

The traveller has full responsibility for ensuring they hold a valid passport and all visas, permits and certificates required for the selected tour as well as any necessary vaccinations to comply with applicable regulations.

## **11. Brochure Pricing**

The prices that appear in the Leisure Guide are valid at the time of publication. The Company reserves the right to change pricing at any time after publication should this be forced upon us. Should changes occur you will be notified at the time of booking.

## **12. Photographs**

The photographs reproduced depict typical scenes experienced, but the subject matter may not necessarily be seen or experienced whilst visiting that destination on any given day. Whilst away with Bay Tours you may be included in some photographs and/or video taken by our guides and drivers that will be used for future promotional advertising purposes and by booking on to this tour you authorise the use of any images you are captured in to be used without any further consent or payment.

## **13. Acknowledgement and Acceptance**

In booking a tour with Bay Tours & Charters the participant(s) acknowledge that they have read, understood and accept these conditions.

## Tour No. 71825 A Mid-Winter Christmas

Date	Friday 18 <sup>th</sup> – Sunday 20 <sup>th</sup> July
Times	All collected by 7am
Cost	Patron: \$1,145.00 Twin Share   \$1,395.00 Single Room Member: \$1,260.00 Twin Share   \$1,555.00 Single Room
Payment	Full payment upon booking please
Price includes	Door to door transport, accommodation x2, breakfast x2, morning tea x1, lunch x2, dinner x1



Back by popular demand – our magical midwinter escape to the **Greytown Festival of Christmas** returns for 2025! This tour was a hit last year, and we've added even more festive cheer for this year's edition.

**Day 1:** We begin our festive weekend with a relaxing journey south and a stop for morning tea along the way. Then it's on to

Greytown for a special new highlight – the very first **Mid-Winter House Tour**. Step inside eight beautifully styled homes, each transformed with seasonal charm and festive flair. From cosy fireside settings to exquisite Christmas tablescapes, you'll find plenty of inspiration and warmth as you wander through these inviting spaces. We'll split up the house tour with lunch en-route followed by more time exploring the homes before checking in at the Copthorne Solway in Masterton. We'll finish the day with a relaxed in-house dinner.

**Day 2:** After breakfast, we visit the tranquil **Stablehouse Garden** for a private tour and morning tea, followed by a festive three-course Christmas lunch at **Tirohana Estate**, complete with crackers and cheer. In the afternoon we pop into **C'est Cheese** before heading to the main event – the **Greytown Festival of Christmas**! Enjoy dazzling light projections, snow falling outside the Town Hall, the Parade, and carols by candlelight. Choose from a range of food trucks for dinner and soak in the joyful atmosphere of this much-anticipated winter celebration.

**Day 3:** On our journey home, we visit **The Christmas Heirloom Company** for a dose of festive inspiration, enjoy a delicious lunch at **Artisan Kitchen Café**, and browse quality woollens and knitwear at **New Zealand Natural Clothing** in Norsewood before arriving back in the Bay.

A perfect mix of cosy charm, Christmas magic, and winter wonder – this tour is sure to leave you feeling merry and bright!





## Tour No. 72225

### Ken's Mystery Day Out

Date	Tuesday 22 <sup>nd</sup> July
Times	All collected by 8.15am
Cost	<b>Patron Special: \$160.00</b> Member: \$200.00
Payment	Full payment upon booking please
Price includes	Door to door transport, morning tea, lunch



It's nearly two years since Ken last led us a merry dance on his Mystery Day Out. And well, not much else to be said about this one. The clue is in the title. Although it's not an entire mystery. We can tell you that it takes place, err, during the day...and that you'll be, um, 'out', whatever that means. Other than that, our lips are sealed. But be warned, these are very popular. Must be the way we talk them up!

## Tour No. 72525

### Winter Soak & Lunch - Taupō

Date	Friday 25 <sup>th</sup> July
Times	All collected by 7.50am
Cost	Patron: \$175.00 Member: \$205.00
Payment	Full payment upon booking please
Price includes	Door to door transport, hot springs entry, lunch

Indulge in a truly relaxing and inspiring day out as we head to beautiful Taupō for a blend of soothing hot springs and stunning local artistry.

Our first stop is the iconic **Taupō DeBretts Hot Springs**, where you can unwind in the naturally heated mineral pools surrounded by lush native bush. With their renowned therapeutic properties and peaceful setting, the pools offer the perfect way to unwind and recharge.



Then it's just a short drive to **Lava Glass Café**, where a warm welcome and a delightful lunch await. Your visit also includes entry to the **glassblowing studio**, where you'll witness the mesmerising art of glassmaking in action, and access to the **sculpture garden**, a vibrant outdoor gallery of contemporary glass art nestled in beautifully landscaped grounds. There's also time to browse the onsite gallery shop for a special piece to take home.

This tour offers a perfect mix of relaxation, creativity, and delicious food – an uplifting winter's day out in one of the country's most scenic spots.



## Tour No. 80325

### Exploring Fiordlands Finest

Date	Sunday 3 <sup>rd</sup> – Sunday 10 <sup>th</sup> August
Times	All collected by 9.15am
Cost	Patron: \$10,375.00 Twin Share Salvin Cabin, \$11,825.00 Twin Share Royal Cabin, \$10,675.00 Single Wandering Member: \$11,425.00 Twin Share Salvin Cabin, \$11,995.00 Twin Share Royal Cabin, \$11,745.00 Single Wandering
Payment	Full payment upon booking
Price includes	Door to door transport, accommodation x7, breakfast x7, dinner x2, cruise incl drinks package and all meals onboard, flights



Join us on an unforgettable 6-day exploration of the remote and majestic **Dusky & Doubtful Sounds**. Limited to just 16 guests, this **small-group voyage** offers a rare chance to explore some of New Zealand's most pristine and isolated wilderness. Accessible only by sea, these awe-inspiring fiords are home to mist-veiled waterfalls, steep mountain peaks, sheltered valleys, and unique wildlife including Bottlenose Dolphins, Fiordland Crested Penguins, and Fur Seals.

Step aboard **Heritage Explorer**, a 30-metre, 4-deck luxury expedition vessel, designed and built right here in Aotearoa. Each day brings opportunities to step ashore using the ship's tender boats for guided nature walks, historic visits, and close-up wildlife encounters — making this much more than a scenic cruise.

#### Itinerary Highlights:

- **Day 1:** Depart Hawke's Bay, fly to Queenstown and transfer to Te Anau for an overnight stay.
- **Day 2:** Scenic helicopter flight into Dusky Sound, where your cruise adventure begins.
- **Days 3–4:** Discover Dusky Sound's history and wildlife, including visits to Anchor and Pigeon Islands, Cook's Astronomers Point, and predator-free bird sanctuaries.
- **Day 5:** Explore Acheron Passage and Breaksea Sound, with kayaking, walks, and a chance to fish for your dinner.
- **Day 6:** Sail into breathtaking Doubtful Sound, home to towering cliffs, cloud-cloaked peaks, and serene waters.
- **Day 7:** Disembark, return to Te Anau and on to Queenstown for a farewell dinner and final night.
- **Day 8:** Fly home to Hawke's Bay with memories to last a lifetime.

Spaces are limited with Single, Twin Share and Double cabins available. Secure your spot now for this once-in-a-lifetime adventure.





## Tour No. 80825

### Lunch at Pōrangahau Country Club

Date	Friday 8 <sup>th</sup> August
Times	All collected by 9.45am
Cost	Patron: \$150.00 Member: \$175.00
Payment	Full payment upon booking please
Price includes	Door to door transport, lunch



#### PORANGAHAU Country Club

Take a relaxing winter's day out and enjoy good company, rural charm, and a hearty lunch. We begin with a comfortable coach journey south, through the scenic heart of Central Hawke's Bay.

Our destination is the welcoming **Pōrangahau Country Club**, where we'll settle in for a delicious **two-course lunch** hosted by Jaimee Schimanski-Wills who has established Coastal Catering based at the Country Club.

After lunch, we make our way home, returning via the stunning Tuki tuki River Valley. Whether it's your first time with us or one of many, this is the kind of day out that reminds us of the simple pleasures that we so love about Hawke's Bay: good food, great views, and even better company.

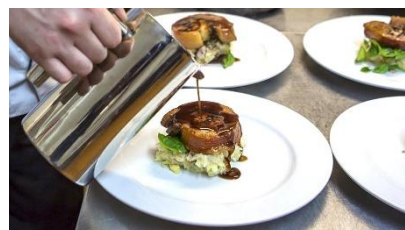


## Tour No. 81425

### Patrons Lunch at Valley D'Vine

Date	Thursday 14 <sup>th</sup> August
Times	All collected by 11.45am
Cost	<b>Patron Special: \$75.00</b>
Payment	Full payment upon booking please
Price includes	Door to door transport, 2 course lunch

Another special 'Patron Only' lunch, this time at Valley D'Vine in Esk Valley. Join us for a delicious **2-course lunch** created for us by owner Greg Miller. Greg is such a creative and skilled chef and our visits to him are always culinary highlights. A great chance for us to say thanks to you and for you to catch up with Tour Club friends.



## Tour No. 82125 Exploring Eketāhuna

Date	Thursday 21 <sup>st</sup> August
Times	All collected by 8.20am
Cost	<b>Patron Special: \$175.00</b> Member: \$215.00
Payment	Full payment upon booking please
Price includes	Door to door transport, lunch



Step back in time and discover the small-town charm and rich local history of Eketāhuna on this delightful winter's day out.

Our journey begins with a relaxing drive through scenic back roads before arriving at the **Middleton Model Railway**, where you'll enjoy a nostalgic look at this lovingly crafted miniature world, complete with a talk by

the owner.

Next, we're off to the warm welcome of the **Eketāhuna Club**, for a hearty home-style lunch hosted by local identity, Gleny Hansen.

In the afternoon, we visit the historic **ANZAC Memorial Bridge** at Kaiparoro, where Glenys will share the touching story behind this unique war memorial – one of the few of its kind in New Zealand, combining both monument and function in a single graceful structure.

With comfort stops along the way and plenty of good company, this day promises to be a fascinating and easy-paced outing celebrating the stories of New Zealand's past.

## Tour No. 82625 Winter Pub Lunch & Quiz

Date	Tuesday 26 <sup>th</sup> August
Times	All collected by 11am
Cost	Patron: \$150.00 Member: \$175.00
Payment	Full payment upon booking please
Price includes	Door to door transport, 2 course lunch

Our popular Pub Quiz will debut at the wonderful **Meeanee Hotel**. Remember, this is a team event. There will be 8 rounds of questions arranged around the lunch courses with each round having a broad category such as 'Geography' or 'Television & Movies'. Peter, our Quizmaster, will ask 10 questions in each round. It's huge fun and everyone contributes something to their team at some stage. Prizes and prestige for the winners are up for grabs and there's also spot prizes so everyone's in with a chance. Join us for a great lunch and lots of laughs as the teams battle it out to be **Bay Tours Pub Quiz Champions**.





## Tour No. 82825

### Dinner at Mangapapa

Date	Thursday 28 <sup>th</sup> August
Times	All collected by 6pm
Cost	Patron: \$170.00 Member: \$185.00
Payment	Full payment upon booking please
Price includes	Door to door transport, 3 course dinner



We only did this in June, but everyone had a fabulous time and said "Let's go back!" So back we go. For more than 20 years **Mangapapa**, known by many as 'The old Wattie homestead' has operated as a boutique hotel whose restaurant has a reputation for high quality cuisine and service. Old-world, white linen table settings set the tone for an outstanding **3 course dinner**, plus a couple of surprises, in unhurried splendour. Come join us for a fabulous dinner amid the tranquil surroundings of one of the regions finest historic homesteads.



*Some of our happy diners in June*

## Tour No. 83125

### Creedence Clearwater Collective – Dinner & Show

Date	Sunday 31 <sup>st</sup> August
Times	All collected by 5.15pm
Cost	Patron: \$210.00 Member: \$235.00
Payment	Full payment upon booking please (ticket cost is non-refundable)
Price includes	Door to door transport, dinner, premium ticket to show

Bay Tours invite you to come and experience the music of Creedence Clearwater Revival and their lead singer and songwriter John Fogerty. Tribute band **Creedence Clearwater Collective** deliver a pitch-perfect high energy homage to a band that reflected a generation. Not only will you hear the band's own classic hits such as 'Bad Moon Rising', 'Proud Mary' 'Who'll Stop The Rain', 'Down On The Corner', 'Fortunate Son' and many more, but also be surprised at the hit songs leader John Fogerty wrote for other artists. We'll enjoy a delicious **2 course dinner at Shed 2** before transferring to the **Napier Municipal Theatre** for a memorable evening of 60s and 70s hits performed live. Don't miss the vibe!



## Tour No. 90225

### A Visit to the National Army Museum

Date	Tuesday 2 <sup>nd</sup> September
Times	All collected by 8.50am
Cost	<b>Patron Special: \$175.00</b> Member: \$210.00
Payment	Full payment upon booking please
Price includes	Door to door transport, morning tea, lunch, museum entry



It's been three years since our last day trip to visit our National Army Museum at **Waivouru**. It has housed the memorabilia of our military history since it opened in 1978. It's an amazing collection, superbly displayed to tell our stories. You're in for a wonderful day which starts with a drive over the '*Gentle Annie*', stopping beforehand at **Kuripapango** for a cuppa. A

delicious lunch on our arrival at the museum in the **Mess Tent Cafe** is followed by plenty of time to wander the museum itself. Our return journey on the same road always provides such stunning vistas. This is a fabulous day out visiting a very special place.

## Tour No. 90425

### Cruise Fiji's Yasawa Islands

Date	Thursday 4 <sup>th</sup> – Friday 12 <sup>th</sup> September
Times	All collected by 12.50pm
Cost	Patron: \$6,555.00 Twin Share   \$8,995.00 Single Room Member: \$7,215.00 Twin Share   \$9,895.00 Single Room
Payment	\$1,500.00 deposit upon booking, balance due by Thursday 10 <sup>th</sup> July
Price includes	Door to door transport, flights, accommodation x4, breakfast x4, lunch, dinner x4, 4-night Fiji Islands Cruise incl accommodation, all meals & activities

This extraordinary tour includes 5 days/4 nights aboard the intimate M.V. Fiji Princess cruise and a relaxing 3-night stay at the luxurious Hilton Fiji Beach Resort & Spa on Denarau Island—Fiji's most renowned holiday destination.

The **Yasawa Islands**, a volcanic archipelago two hours by boat from Fiji's mainland, are the picture-perfect South Pacific paradise: palm-fringed white sand beaches, crystal-clear turquoise waters, and vibrant coral reefs teeming with marine life.



#### Tour Highlights

##### Days 1–2: Arrival & Denarau

After an overnight stay in Auckland, we fly to Fiji where a traditional Fijian welcome awaits. A guided tour of the western side of Viti Levu includes the South Pacific's largest Hindu

temple and the lush Gardens of the Sleeping Giant. We then check in at the Hilton Fiji Beach Resort & Spa—our beachfront home for three nights.

### **Day 3: Free Day in Denarau**

Today is yours to enjoy as you please. Take in the view from your Beachfront Guestroom, explore Denarau's boutiques and marina, relax by the pools, indulge at the spa, or simply unwind with lunch at one of the resort's restaurants. Tonight's dinner is at the acclaimed Bonefish Seafood Restaurant.

### **Day 4: Malamala Beach Club**

We head to Malamala, the world's first private island beach club. Practice snorkelling or paddleboarding, swim in the warm lagoon, or simply relax under a palm tree with a cocktail in hand. Numbers on the island are strictly limited to keep it peaceful and exclusive.



### **Day 5: Cruise Begins**

After a short transfer to Denarau Marina, we board a high-speed catamaran to meet our cruise ship, the M.V. Fiji Princess, anchored at the Sacred Islands. This boutique cruise ship accommodates just 64 guests across 32 air-conditioned cabins. With only 30 Fijian crew

onboard, the hospitality is personal and heartfelt. We'll be staying in spacious Orchid cabins on the upper decks, all with ocean views.

Expect mouthwatering dining—BBQs, buffets, and traditional Fijian meals served in spectacular settings. Tonight, we cruise to Yalobi Bay where we enjoy a welcome reception and dinner on the Sky Deck.

### **Day 6: Blue Lagoon Paradise**

We cruise to Blue Lagoon Beach on Nanuya Lailai Island for a BBQ lunch and water activities. Snorkel, paddleboard, kayak, or simply swim in the tranquil waters. In the evening, we'll experience a traditional Lovo dinner and cultural Meke performance hosted by local villagers.

### **Day 7: Island Adventures & Caves**

Begin the day with a guided walk to Lo's Tea House on Sawa-I-Lau Island. After lunch, explore the sacred Sawa-I-Lau Caves and visit Tamasua Village for a fascinating tour and seafood dinner.

### **Day 8: Marine Wonders & Farewell Fun**

Today we visit a local school before cruising to Drawaqa Island. A marine biologist will join us to share insights into the vibrant coral ecosystems. There may be a chance to swim with Manta Rays or try your hand at traditional fishing. Tonight, we enjoy a festive farewell BBQ and dancing on the Sky Deck.



### **Day 9: Return to NZ**

After a leisurely breakfast, we cruise back to Denarau and transfer to Nadi Airport for our afternoon flight to Auckland and connecting flight to Hawke's Bay.

The Yasawa Islands offer a serene and unforgettable winter getaway, far from the crowds. Come join our own Kerren & Ken and experience the warmth of Fijian hospitality and the natural wonders of this remote island paradise.





## Tour No. 91325

### Priscilla Queen of the Desert - Auckland

Date	Saturday 13 <sup>th</sup> – Sunday 14 <sup>th</sup> September
Times	All collected by 7.30am
Cost	Patron: \$795.00 Twin Share   \$905.00 Single Room Member: \$895.00 Twin Share   \$985.00 Single Room
Payment	\$300.00 upon booking, balance due by Friday 18 <sup>th</sup> July
Price includes	Door to door transport, accommodation, breakfast, morning tea, dinner, premium ticket to show



Get ready to add a splash of colour to your spring with a fabulous overnight trip to Auckland to see the sensational *Priscilla Queen of the Desert – The Musical* at the iconic Civic Theatre.

Based on the smash-hit 1994 film, this heartwarming and hilarious musical tells the story of three

friends who hop aboard a battered old bus, Priscilla, and head off on the adventure of a lifetime across the Australian outback. With a dazzling parade of more than 500 outrageous costumes, spectacular dance numbers, and a non-stop hit parade of dancefloor favourites like *It's Raining Men*, *I Will Survive*, *Go West* and *Shake Your Groove Thing*, this is a feel-good show bursting with fun, friendship and fabulousness.

Our adventure begins early as we head north, enjoying a relaxed BTAC morning tea at beautiful Wharewaka Point by the lakefront in Taupō. We'll stop for lunch at the quirky township of Tirau before arriving in Auckland mid-afternoon to check in at the stylish Waipuna Hotel in Mt Wellington. After a delicious in-house buffet dinner, we'll make our way to The Civic for this spectacular evening of entertainment.

After a restful night and hearty breakfast at the hotel, we'll take our time arriving back home late afternoon, with fabulous memories, full hearts, and a few new favourite songs in your head!

This promises to be a weekend full of laughter, music, and pure entertainment – a real tonic to brighten the tail end of winter.

## Tour Club Friends & Perks



Invite a friend to join Tour Club and you'll both be rewarded:

- **You get \$50 or \$100 credit** (depending on their first trip) once they've travelled.
- **They get \$50 or \$100 off** their first trip too!

Just make sure your friend mentions your name when they sign up — or, with their permission, you can pass their details on to us directly to ensure you're noted as the referrer. Too easy!

## Tour No. 91625 Craggy Range Sheep Dairy & Lunch

Date	Tuesday 16 <sup>th</sup> September
Times	All collected by 9am
Cost	Patron: \$195.00 Member: \$220.00
Payment	Full payment upon booking please
Price includes	Door to door transport, morning tea, lunch

Here at Bay Tours we're so thrilled when we get the opportunity to introduce a local enterprise that is a rising star in its field.

Out the back of the Tukituki Valley, behind Havelock North is a farming venture with a difference that's picking up awards and causing a stir. **Craggy Range Sheep Dairy** is the brainchild of James and Kate Clairmont and they, and their young family, milk 200 French dairy-breed ewes every day with the aim being the production of various delicious cheeses. Sheep milk is naturally homogenised, contains almost twice as much calcium and much more protein and amino acids than cow's milk. And at last year's **National Cheese Awards** their cheeses scooped an incredible **FIVE trophies**. After morning tea at **Te Awanga Domain**, we'll take the picturesque drive along the Tukituki River and up Craggy Range Road to their farm where, firstly, James will introduce us to his beloved milking ewes and show us around the specially built milking shed. We'll see where the cheese-making magic happens and then make our way up to the homestead where Kate will welcome us for a tasting of their handcrafted, award-winning cheeses. There will be a chance to purchase anything that appeals.



From here we make our way to the excellent **No.5 Café & Larder**, known for its warm hospitality and country-style menu, for a delicious lunch. We finish the day with a visit to the popular **Te Mata Figs**, where Helen and Murray will share the story behind their homegrown fig products – complete with a tasty sample, of course!

This will be a day of new discoveries and of showcasing the high quality produce our region has in abundance. It'll be popular so don't hesitate to book your place.



*Cape Sanctuary Tour & Lunch – March 2025*

## Tour No. 91825

### Lunch at High St Bistro - Dannevirke

Date	Thursday 18 <sup>th</sup> September
Times	All collected by 10.50am
Cost	Patron: \$175.00 Member: \$195.00
Payment	Full payment upon booking please
Price includes	Door to door transport, 2 course lunch



Treat yourself to a delicious day out as we journey south for a relaxed afternoon of fine food and friendly company in Dannevirke. We were so impressed with the trip we made down to **High St Bistro** in 'Dannevegas' last year for dinner, that we've persuaded owners, Campbell, Nicole and Brock Sprague to especially open for us at lunchtime.

We'll travel in comfort through the heart of the Hawke's Bay countryside before arriving at the popular and critically acclaimed **High St Bistro**, where we'll enjoy a **2-course lunch** from a specially

prepared menu. With quality ingredients and warm service in a stylish yet welcoming setting, this is a dining experience to savour.

There'll be time to relax, enjoy conversation, and take in the pleasant surroundings before we head home feeling refreshed and well-fed.

A perfect outing for those who enjoy good food and great company – why not join us? You won't want to miss this one.

## Tour No. 92025 & 92725

### WOW #1 & #2 - Wellington

Date	Saturday 20 <sup>th</sup> – Sunday 21 <sup>st</sup> & Sat 27 <sup>th</sup> – Sun 28 <sup>th</sup> September
Times	All collected by 8.35am
Cost	Patron: \$755.00 Twin Share   \$895.00 Single Room Member: \$835.00 Twin Share   \$985.00 Single Room
Payment	\$250.00 upon booking, balance due Friday 1 <sup>st</sup> August (ticket cost is non-refundable)
Price includes	Door to door transport, accommodation, breakfast, morning tea, dinner, premium ticket to show

What can we say about the **World of Wearable Art** show that hasn't already been said? It is simply this, a truly world-class exhibition show, created entirely in and by New Zealanders, which combines theatre, music, dance and even circus to showcase stunning pieces of 'art-to-be-worn' by designers from around the world. Each year the show seems to get even better. Bay Tours have been securing premium viewing seats and taking local Hawke's Bay people to the show in Wellington for years now. Get together with friends or make new ones on the journey to this experience that will dazzle the senses.





## Tour No. 92525

### Garden to Vase with Foraged & Found

Date	Thursday 25 <sup>th</sup> September
Times	All collected by 8.20am
Cost	Patron: \$295.00 Member: \$330.00
Payment	Full payment upon booking please
Price includes	Door to door transport, morning tea, lunch, flower workshop



Following the amazing experience of our first visit to the stunning **Aramoana homestead** for this brilliant day out, we knew we had to go again. Enjoy a truly special day out filled with natural beauty, creativity, and gentle inspiration with a hands-on floral experience led by the talented team from **Foraged and**

#### **Found.**

Nestled in a picturesque coastal setting, our hosts will guide us through their lush **cut flower garden**, sharing stories of the homestead's history along the way. A light morning tea will be served before we settle in for a relaxed **floral arrangement workshop**, where you'll be guided in creating your own beautiful vase arrangement to take home. No standing required, as seating is provided throughout the session.

We'll pause mid-day to enjoy a **delicious lunch on the verandah**, with sweeping views out toward the sea – the perfect backdrop to a creative and restorative outing.

Places are limited to just 20 guests, so don't miss your chance to unwind, create, and connect in this very special setting.

## Tour No. 92625

### Lunch at Elephant Hill

Date	Friday 26 <sup>th</sup> September
Times	All collected by 11.45am
Cost	Patron: \$160.00 Member: \$190.00
Payment	Full payment upon booking please
Price includes	Door to door transport, lunch

It's been more than 5 years since we last had lunch at the magnificent **Elephant Hill** winery at Te Awanga. This stunning environment, where fine food, ocean views, and refined surroundings come together, always makes for a memorable experience.

We'll enjoy a **3-course lunch**, specially created by new **Head Chef Conor Mertens**, served family-style as we take in the views of the Pacific Ocean and towards Cape Kidnappers.

Elephant Hill is one of Hawke's Bay's premier dining destinations and we're excited to be returning for what promises to be a spectacular lunch.



## Tour No. 92925

### Cross Country Back Roads

Date	Monday 29 <sup>th</sup> – Tuesday 30 <sup>th</sup> September
Times	All collected by 8am
Cost	Patron: \$675.00 Twin Share   \$795.00 Single Room Member: \$775.00 Twin Share   \$925.00 Single Room
Payment	\$225 upon booking, balance due Tuesday 5 <sup>th</sup> August
Price includes	Door to door transport, accommodation, breakfast, morning tea x2, lunch, dinner



Join us for a **2 Day** journey off the beaten track as we explore the scenic byways, hidden gems, and heartland charm of the central North Island's countryside.

Our adventure begins driving up the coast to **Wairoa**, where we'll enjoy morning tea at legendary **Osler's Bakery** before winding through the lush, forested beauty of **Te Urewera**. We pause beside **Lake Waikaremoana** for a peaceful picnic lunch, then continue through remote country roads to **Murupara** for

a mid-afternoon ice cream. Later, we arrive in **Rotorua**, where we'll unwind at the **Lakeside Novotel Hotel** and share a relaxed buffet dinner together.

The following morning, enjoy breakfast at your leisure before we head to the serene **Waikite Valley Thermal Pools** for morning tea and a chance to enjoy a soak in the rejuvenating warm waters. Our return journey meanders over the back roads, with free time in **Taupō** for lunch, before heading home full of stories, smiles, and fresh country air.

A relaxed getaway through the quiet corners and scenic treasures of our own backyard – perfect for those who love the journey as much as the destination.

## Tour No. 100225

### Christmas Barn & Banquet

Date	Thursday 2 <sup>nd</sup> October
Times	All collected by 8.05am
Cost	Patron: \$220.00 Member: \$250.00
Payment	Full payment upon booking please
Price includes	Door to door transport, morning tea, lunch

Step into the spirit of the season early with a joyful day of festive cheer, shopping delights, and a beautiful banquet lunch to remember.

Our day begins with a morning tea stop in **Dannevirke**, a chance to stretch the legs and enjoy a cuppa before continuing south to the wonderfully enchanting **Christmas Barn** near Palmerston North. Brimming with twinkling decorations, charming gifts, and timeless treasures, this delightful stop is sure to spark your Christmas spirit.



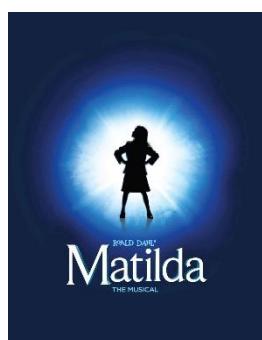
Afterwards, we're off to the exclusive **Orlando Country**, nestled in the Manawatu countryside, for a truly indulgent banquet lunch, served in elegant surroundings with views to match. With excellent hospitality and flavours to savour, this is a dining experience to remember.

A perfect pre-Christmas outing – festive, relaxed, and full of joy. Come along and share in the sparkle!

## Tour No. 100325

### Matilda the Musical – Dinner & Show

Date	Friday 3 <sup>rd</sup> October
Times	All collected by 5.15pm
Cost	Patron: \$250.00 Member: \$280.00
Payment	Full payment upon booking please
Price includes	Door to door transport, 2 course dinner & premium ticket to show



Join us for a magical evening of theatre and fine dining as we head to Napier's iconic Municipal Theatre for the spectacular *Matilda the Musical*. Before the show, we'll enjoy a delicious dinner at Shed 2, the perfect spot to relax and savour a wonderful meal before an unforgettable night of entertainment.

Based on Roald Dahl's beloved tale, *Matilda the Musical* is a dazzling, high-energy production packed with wit, charm, and show-stopping numbers. Follow the story of Matilda, an extraordinary girl with a brilliant mind and a daring spirit, as she takes on the challenges of childhood with courage and a little bit of magic. With stunning performances and an award-winning score, this show is sure to delight audiences of all ages.

Don't miss this enchanting night of theatre and dining—book your seat for an evening of pure joy!



## Tour No. 100625

### Molesworth & Rainbow Stations & More

Date	Monday 6 <sup>th</sup> – Friday 10 <sup>th</sup> October
Times	All collected by 8am
Cost	Patron: \$3,485.00 Twin Share   \$3,925.00 Single Room Member: \$3,850.00 Twin Share   \$4,320.00 Single Room
Payment	\$800.00 upon booking, balance due by Monday 11 <sup>th</sup> August
Price includes	Door to door transport, accommodation x4, breakfast x4, morning tea x4, lunch x3, dinner x4, flights

This classic tour has become something of a Bay Tours institution. The stunning scale and rugged beauty of **Molesworth Station** together with another neighbouring giant, **Rainbow Station** with its latticework of pristine lakes, is contrasted by the alpine tranquillity of the village of **Hanmer Springs** where we'll be based. Another stark contrast to the impression of permanence at **Molesworth** can be seen when we visit **Woodchester Station** where the effects of the Kaikoura earthquake will astound you. A **FREE DAY** in Hanmer Springs itself allows you time to relax or explore this beautiful alpine village between our big station touring days.





**Day 1:** This morning we fly to Christchurch. We'll be welcomed by Ross Carter of Molesworth Tours, who has over 40 years' experience guiding visitors through the Molesworth and Rainbow back country, including more than a decade with Bay Tours. Ross will collect us from the airport, and we'll drive north towards **Woodchester Station**, east of Hanmer Springs and nestled in the shadow of the St James Range. Here the Kelly family will host us for lunch and show us some

astonishing evidence of nature's power which has transformed their lives forever. Later in the afternoon we make our way to **Hanmer Springs** and our superb centrally located base, the cozy **Drifter's Inn** where hosts Adele and Andy MacLeod will look after us for the next four nights.

**Day 2:** Today we're collected by Ross in a special 4WD mini-coach and we head over **Jack's Pass** and into the Clarence Valley and **Molesworth Station**. We'll visit iconic points on the massive station such as the 150yo **Acheron Accommodation House**, **Isolated Flat** with its hundreds of acres of rippling clover and tussock grass, and the main central homestead complex with its century old cob buildings. Cattle share the sides of the sparkling rivers with Canada Geese and Paradise Ducks. It's difficult to prepare yourself for the sheer vastness and beauty of the place. Passing through sections of the **Muller** and **Tarndale Stations** on the way back, we descend back into **Hanmer Springs** again via the rugged **Jollies Pass**. A day heavy with memorable moments.

**Day 3:** There's time to relax and reflect on yesterday as you have a **FREE DAY** in Hanmer Springs today. Explore this beautiful alpine village with its many bush walks, wander the tranquil grounds of the old Queen Mary Hospital with its historic buildings or enjoy a soak in the pristine thermal Hot Pools of the spa which gives the town its name. Tonight, we'll dine together at the hotel.

**Day 4:** Today we're back with Ross as we again climb Jack's Pass but, this time, we head west up through the former **St James Station** and into the Spenser Range to **Lake Tennyson**. We'll drive over **Island Pass**, the highest in the country at 1300 metres, before descending into **Rainbow Station** itself. Craggy beech-covered mountains sweep down to the boulder-strewn rivers that bisect the valleys. Remarkable for its transitioning landscapes, Rainbow Station is much smaller than Molesworth in area at a 'mere' 20,500 acres.



Usually carrying around 14,000 head of stock – a mix of sheep and cattle this time – its diversity of terrain and climates has made its productivity legendary. What a contrast.

**Day 5:** We depart Hanmer Springs this morning and make our way back to **Christchurch Airport** but not before a visit to **Iron Ridge Sculpture Park** on the banks of the Waipara River. Here sculptor Raymond Herber has, over 20 years, transformed a former limestone quarry into a huge, stunning, exhibition space like no other. Then it is on to the airport where, after a late lunch, we catch our flight back to 'the Bay'.

**Molesworth** and **Rainbow Stations** make up a land truly alive with the evocative atmosphere of stockmen and shepherds, dogs and drovers, slough hats and well-worn saddles. It is to get a glimpse of their way of life and to meet some of the people continuing the legacy.

**Places on this tour are extremely limited so do not hesitate in securing your spot.**

## Tour No. 100925

### North of the North

Date	Thursday 9 <sup>th</sup> – Saturday 18 <sup>th</sup> October
Times	All collected by 7.45am
Cost	Patron: \$4,755.00 Twin Share   \$5,835.00 Single Room Member: \$4,995.00 Twin Share   \$6,425.00 Single Room
Payment	\$800.00 upon booking, balance due Thursday 14 <sup>th</sup> August
Price includes	Door to door transport, accommodation x9, breakfast x9, morning tea x4, lunch x7, dinner x9



It's been a few years since the warming balmy breezes of "The Winterless North" have beckoned us. With time to spend in the jewel that is the **Bay of Islands** plus a wonderful sojourn even further north to beautiful **Doubtless Bay** and now the addition of time in the stunning **Hokianga**, this edition of our **North of the North** tour will be the most comprehensive and satisfying yet. In all, this **10 Day** round trip will allow us to better experience

this most historically important of regions. And the weather's usually pretty good in Spring too! Here's a summary of this amazing itinerary;

**Day 1: Hawke's Bay to Auckland** We set out on our summer adventure heading north as far as Auckland today and staying at the fabulous **Waipuna Hotel**.

**Day 2: Auckland to Bay of Islands** We have a brief stop in pretty **Warkworth** for a cuppa and then it's onward, over the Brynderwyn Hills, and across Bream Bay to **Whangārei** for lunch and a wander at the spectacular **Hundertwasser Centre**. This afternoon we're into the Far North and after an ice cream stop at **Kawakawa** it's on to the wonderful **Kingsgate Autolodge** in **Paihia**, our base for the next 4 days right on the beachfront, in the heart of the **Bay of Islands**.

**Day 3: Paihia & The Bay** This morning we walk to Marsden Wharf and board the 'Dolphin Seeker' to cruise through the bay and out to the famous 'Hole-In-The-Rock' where the open ocean meets us at **Cape Brett**. It's very common to come across schools of Bottlenose Dolphins as we're cruising and our crew will be keeping an eye out for them. We'll have lunch on the stunning **Urupukapuka Island** where afterwards you can swim in the warm crystal-clear water of the bay, walk to the top of the island for panoramic views, or simply relax under the Pohutukawa or on the beach. We disembark at **Russell** on the way back and enjoy a guided tour of our country's first capital before returning on the ferry to **Paihia** to relax or explore. Dinner tonight is at the stunning **Zane Grey's** restaurant at the water's edge.



**Day 4: Paihia A FREE DAY** of leisure today. Perhaps wander the **Paihia Arts & Crafts Market** on the Village Green or explore further along Marsden Rd to the beautiful stone church of **St Pauls**. Maybe grab some delicious fish & chips from Vinnies for lunch and enjoy them on the waterfront or visit the **Paihia Library**. If you enjoy a swim there are three excellent beaches within 10 minutes walk of the hotel or maybe just relax poolside.

Tonight, we come together to enjoy a wonderful Chinese meal with our friends at the secret hideaway **King Wah** restaurant.



through **James Busby's Treaty House** and the new museum dedicated to the **28<sup>th</sup> Māori Battalion**. The views across the bay to Russell, Paihia and Opua from the giant Treaty Ground lawn are fabulous. Tonight, we take the ferry to Russell for dinner at **The Duke Of Marlborough Hotel**. Superb!

**Day 6: Paihia to Doubtless Bay** We say farewell to Paihia this morning as we head north, firstly to **Kerikeri** to visit the historic **Stone Store** and New Zealand's oldest building, **Kemp House**. There's so much to see around this complex. We then continue further north to **Doubtless Bay** and our first stop in the district is lunch at the legendary **Mangonui Fish Shop** which sits out over the water. There's time after lunch to explore this picture-perfect seaside settlement before we head a little further around the bay past **Coopers Beach** and **Cable Bay** to visit **Gumdiggers Park**, dedicated to the legacy of the thousands who, more than a hundred years ago, came to the Far North to dig for the precious **Kauri Gum**. Set amidst a real former gumfield, the Park gives a fabulous insight into the lives of the gum diggers and the value of the Kauri Gum (or Amber) they extracted. After this we settle into our new home at the lovely **Taipa Beach Resort**. With its palm trees, beachfront location and warm sea breezes, it's easy to imagine you're in the Islands.

**Day 7: Cape Reinga & Ninety Mile Beach** We spend today taking a custom-built 4WD coach to the very northern tip of New Zealand, **Cape Reinga**. What a thrill to speed along the sands of **Ninety Mile Beach** and power through the streams and gullies around the giant sand dunes south of the Cape. We return to **Taipa** for the night.

**Day 8: Doubtless Bay to the Hokianga** This morning we pack up and head south. And after a beach morning tea at **Kaeo** we meander towards the magnificent Hokianga and lunch at the little settlement of **Rawene**. In the afternoon we visit the historic home of pioneer James Clendon – ship's captain turned merchant & magistrate. Then it's on to **Opononi** and our accommodation for tonight.

**Day 9: Hokianga to Auckland** Today we begin our journey home down the west coast stopping in the Waipoua Forest to visit the venerable giant Kauri, **Tāne Mahuta**. Then it's on to **Kaiwaka** for lunch and down to **Auckland** and a return to the **Waipuna Hotel** with time to relax or perhaps a gentle walk around the **Panmure Basin**.

**Day 10: Auckland to Hawke's Bay** Today we return home to Hawke's Bay with wonderful memories of an amazing time in the North and perhaps a tan as well.

The **Bay of Islands** and the **Far North** can rightfully be considered foundational to our nation. It is where the New Zealand of today began to take shape. Add to this the wonderful sub-tropical climate of the region and the crystal-clear waters of the **Bay of Islands** and it's obvious why this part of New Zealand is such a magnet for visitors.

Join us for the most comprehensive visit to the region that we've ever undertaken, giving you the time to enjoy and savour the pace, the people and the beauty that is New Zealand's **Far North**.

**Day 5: Waimate & Waitangi** This morning we visit the first mission station established by Samuel Marsden at **Waimate** in 1832 and enjoy morning tea in the gardens. Later we stop for a picnic lunch by the delightful **Haruru Falls** before making our way to the magnificent **Waitangi Treaty Grounds**. Here a guide will show us around Hobson's Landing and up to the Treaty Grounds themselves where there will be plenty of time to look





## Tour No. 101825

### Queen: It's a Kinda Magic – Dinner & Show

Date	Saturday 18 <sup>th</sup> October
Times	All collected by 5.45pm
Cost	Patron: \$225.00 Member: \$250.00
Payment	Full payment upon booking please
Price includes	Door to door transport, dinner, premium ticket to show



When it comes to tribute acts, this is something pretty special. Not only does **It's a Kinda Magic** look and sound just like Freddie Mercury and the band Queen, but they recreate a specific moment in the bands' career – their **1986 World Tour** concert. Featuring more than 20 of the band's greatest hits including 'We Will Rock You', 'Bohemian Rhapsody', 'We Are The Champions' & 'Fat-bottomed Girls', painstaking detail is paid to all aspects of the music and performances of 1986. From Freddie's voice and Brian May's 'Red Special' guitar to the costumes and lighting set ups of that famous tour. Join us for dinner at **Shed 2** before we take our seats at the **Napier Municipal Theatre** ready for the singing and dancing to begin. This will be one of the most entertaining nights of 2025.



## Tour No. 102125

### Notable Homes of Hawke's Bay

Date	Tuesday 21 <sup>st</sup> October
Times	All collected by 10.40am
Cost	Patron: \$200.00 Member: \$230.00
Payment	Full payment upon booking please
Price includes	Door to door transport, lunch, afternoon tea

Spend the day immersed in the grace, charm, and rich stories of some of Hawke's Bay's most distinctive historic homes. This elegant & engaging day tour offers rare access to private properties that beautifully reflect the region's heritage & architecture. Our journey begins with a scenic drive through to historic **Maraekakaho** to view several historic buildings associated with the giant Maraekakaho Station that dominated this part of Hawke's Bay in the provinces pioneering days. Once part of this gigantic station, at **Greenhill**, in the Raukawa Valley, we'll enjoy a talk & guided tour of this stunning property with the current owners, followed by lunch. In the afternoon, we continue to **Redcliffe**, near Ōtātara, which is one of the two original Dolbel family homesteads. Here our host Sue Calcinai will share tales of the home's past as we stroll through the home and its lovely gardens. Finally, we're welcomed to **Silverford** a Charles Natusch designed home in the Dartmoor Valley, where we'll enjoy a tour, and a delightful **afternoon tea**, with the owners, in gracious surroundings. Join us for a relaxed day exploring the beauty & history tucked behind the gates of a few of Hawke's Bay's finest private country residences.



## Tour No. 102225

### Spring Progressive Dinner

Date	Wednesday 22 <sup>nd</sup> October
Times	All collected by 5.50pm
Cost	Patron: \$165.00 Member: \$190.00
Payment	Full payment upon booking please
Price includes	Door to door transport, 3 course dinner



Join us for a delightful evening of dining and discovery as we savour the best of local cuisine across three vibrant venues on this progressive dinner experience.

We begin the evening at **K Kitchen & Bar** in central Napier, where a specially curated **entrée** will set the tone for what's to come. From there, we journey to the waterside charm of Ahuriri and settle in at **Madame Social**, known for its stylish flair and culinary creativity, to enjoy our **main**

**course**. We end our evening just down the quay at the ever-popular **Shed 2 Restaurant**, where a sweet finale of **dessert** awaits in a relaxed and welcoming setting.

Let us do the driving while you indulge in wonderful food, great conversation, and the magic of an evening well spent.

## Tour No. 102825

### Hurunui Garden Festival

Date	Tuesday 28 <sup>th</sup> October – Tuesday 4 <sup>th</sup> November
Times	All collected by 8.15am
Cost	Patron: \$4,495.00 Twin Share   \$5,345.00 Single Room Member: \$4,995.00 Twin Share   \$5,895.00 Single Room
Payment	\$800.00 upon booking, balance due Tuesday 2 <sup>nd</sup> September
Price includes	Door to door transport, accommodation x7, breakfast x7, morning tea x4, lunch x4, dinner x7

One of the most renowned areas of the country for gardens – particularly country gardens – is the North Canterbury district of **Hurunui**. In late October, every year, garden enthusiasts from around the country descend upon the district to enjoy access to some of New Zealand's most impressive spaces. In October, Bay Tours will be attending the festival for the first time at the suggestion of organizing committee member and local gardening guru Doreen Dryden, who extended the invite to Ken during a visit he made to her garden in early 2024. As well as visiting many different properties around the





district over three days, this **8 Day** tour is timed to include the wonderful **Hanmer Springs Fete**, a much-anticipated highlight on the North Canterbury social calendar, and attend race day at the picturesque seaside **Kaikoura Trotting Club**. There's something in this tour for everyone. Here's a summary;

**Days 1 & 2:** We overnight in **Wellington** on Day 1 and take the ferry across Cook Strait then drive to **Kaikoura** where we spend the night on Day 2.



**Day 3:** We depart Kaikoura this morning and over the course of the day make our way towards **Hanmer Springs** visiting gardens in **Waiau**, **Rotherham** and **Culverden** along the way. We settle into our home for the next 3 nights – the much-loved **Drifter's Inn** right in the middle of Hanmer.

**Day 4:** Today we visit properties in the **Waipara**, **Amberley** and **Hawarden** districts before returning to Hanmer Springs where a soak in the Hot Pools might be just the thing before dinner.

**Day 5:** It's the **Hanmer Springs Fete** today with the annual celebration held in the grounds of the historic Queen Mary Hospital – just a couple of minutes' walk from our accommodation. It's a **FREE DAY** for you so you can set your own itinerary today. Perhaps enjoy

a walk amongst the tree carvings in the forest behind the village. Have a coffee in one of the excellent cafés or just relax and enjoy the festive atmosphere of this pretty place.

**Day 6:** We take our leave of Hanmer this morning and head to **Cheviot** for a look at a couple of stunning gardens before continuing on to **Kaikoura** and an afternoon at the trots on the seaside racecourse at South Bay. We'll overnight in Kaikoura again.

**Day 7:** We continue our journey northward stopping at **Blenheim**. We'll visit two stunning gardens – **Welton House** and **Longfield** – where they're putting the finishing touches to things in preparation for the Marlborough Garden Festival the following week.

**Day 8:** After an overnight stay in Picton we take an early ferry back to **Wellington** and carry on to **Palmerston North** where we break for lunch before returning to the Bay in the afternoon.

We're very excited about this tour which has been a long time in the making. The **Hurunui Garden Festival** is timed to showcase the North Canterbury region in all its late-Spring finery. Come and experience South Island hospitality and some spectacular properties and experiences. Don't miss this incredible opportunity.





**Bay Tours invites you to become a**

# *Patron Member*

We invite all members to consider becoming an inaugural **Patron Member** which, for the payment of a modest annual subscription of \$49pp, or \$85 for couples, will give you access to specially discounted prices on every tour you book. The more you travel with us, the more you'll save.

Becoming a **Patron Member** will also gain you access to exclusive offers of heavily discounted Patron Only Lunches at various restaurants and cafes throughout the year. You'll see one of these listed in this Leisure Guide.

And if these opportunities weren't enough reason to join, there's more...

We've partnered with several prominent retail and hospitality outlets who will grant you exclusive discounts when you present your **Patron Member** Card in their establishment (See more about this on the next page).

So, to summarise, here's why becoming a **Patron Member** makes sense;

- A discounted price on every tour we offer.
- Access to Patron Only Lunches through the year at specially discounted prices.
- Special discounts at partner retail and hospitality establishments.
- All this for a modest inaugural subscription of \$49pp or \$85 for couples.
- Invest in your touring year by simply emailing [tourclub@baytours.co.nz](mailto:tourclub@baytours.co.nz) or calling our office on 06 845 2736 ext. 1 and becoming a **Patron Member** today.

*Regardless of when you sign up, your membership expires on the 31<sup>st</sup> January each year. You decide whether to re-subscribe each year.*

# PATRON PARTNER BENEFITS

The businesses below have partnered with us to offer additional benefits to Tour Club Patrons. Sign up now to enjoy these exclusive discounts.



## Lone Star - Napier

You and your guests enjoy 10% off the bill when you dine together at Lone Star.



## Ahuriri Pharmacy

Get 10% off all your health and beauty needs or gifts for your family and friends.



## Silky Oak Chocolate

Indulge in some gourmet treats and get 10% off retail and food (including café)\*.



## Bay Plaza Pharmacy

Shop for all your beauty and healthcare needs and get a 10% discount.



## Birdwoods

Treat yourself to a coffee or stay for lunch and get a 10% discount on all café items.



## We sow, you grow

10% off all locally grown herbs, vegetables and plants for your garden.

**To get your offer, you will need to show your current membership card**

**\*Discount not available on already price reduced items.**

## Tour No. 110225

### Ngā Manu Kiwi & Native Bird Encounters

Date	Sunday 2 <sup>nd</sup> – Monday 3 <sup>rd</sup> November
Times	All collected by 9am
Cost	Patron: \$895.00 Twin Share   \$1,065.00 Single Room Member: \$995.00 Twin Share   \$1,175.00 Single Room
Payment	\$300.00 upon booking, balance due Thursday 25 <sup>th</sup> September
Price includes	Door to door transport, accommodation, breakfast, lunch, afternoon tea, dinner



Since 1974 **Nga Manu Nature Reserve** on the Kapiti Coast has been a cornerstone for the conservation of New Zealand's natural heritage. Whilst its big brother, Kapiti Island, is widely known, Nga Manu quietly protects one of the last remnants of coastal lowlands swamp forest in the country. Officially opened to the public in 1981, the 35-acre wildlife reserve offers visitors an immersive experience of our native flora and fauna, inspiring efforts in conservation and education. On this **2 Day** tour we'll experience guided encounters with New Zealand's native

birds in their natural environment.

Our first day begins with a scenic drive south, stopping for lunch at the ever-popular **Viv's Kitchen** in Sanson, before making our way down the Himatangi Straights, through Horowhenua to the Kapiti Coast and our overnight accommodation at the luxurious **Raumati Sands Resort**. After a seaside dinner at the **Waterfront Bar & Kitchen**, we make our way to **Ngā Manu Nature Reserve**, where our special **Kiwi Night Encounter** begins. Guided by the knowledgeable Rangers, we'll venture into the Reserve after dark with an intimate and unforgettable opportunity to observe these fascinating nocturnal birds.

After a refreshing night's sleep and breakfast we return to **Ngā Manu** where, again led by the Rangers, we'll have a **Native Bird Close Encounter** where we'll meet the cheeky **Kaka**, the flamboyant **Kakariki**, playful **Kea** and unique **Whio** (Blue Duck). We'll have the opportunity to feed these amazing birds, gaining insights into their behaviours and habitats. This hands-on encounter is a unique chance to connect with the avian wildlife in the safety of the Reserve. Afterwards we'll enjoy a picnic lunch in the beautiful reserve grounds. After lunch we begin our journey home, but with one more charming stop to make when we enjoy a **Devonshire Tea** at the elegant homestead of **Wharerata** on the outskirts of Palmerston North.



Join us for a rare opportunity to experience the New Zealand bush after dark, and meet some of our most treasured native creatures up close in their natural surroundings.

**Limited to 10 places, book now so you don't miss out!**



## Tour No. 110425 Forgotten World by Rail and River

Date	Tuesday 4 <sup>th</sup> – Friday 7 <sup>th</sup> November
Times	All collected by 9.45am
Cost	Patron: \$2,195.00 Twin Share   \$2,555.00 Single Room Member: \$2,515.00 Twin Share   \$2,895.00 Single Room
Payment	\$750.00 upon booking, balance due Friday 12 <sup>th</sup> September
Price includes	Door to door transport, accommodation x3, breakfast x3, morning tea x3, lunch x3, dinner x3



For many years we've taken tours into the heart of the **King Country** to experience a day traversing the old rail lines of a part of the country, west of Taumaranui, that's often referred to as '*The Forgotten World*'. And each time we've visited we've discovered other hidden gems of this district that we felt also deserved exploration. So, this year, we've combined the experience of riding the rails on the converted golf carts

through picturesque countryside, as we always have, with an exploration of the upper reaches of the **Whanganui River** by jet boat, which we haven't done before.

**Day 1:** Our adventure begins with a scenic journey north to **Taumarunui**, stopping along the way to enjoy a delicious catered lakeside lunch in **Taupō**, before driving around the lake and through National Park (now called Waimarino) before settling in at the cozy **Central Park Motel** in Taumaranui, our home for the next three nights.

**Day 2:** This morning, we divide our tour group in half with one starting with the exploration of the countryside in the **rail carts** travelling through abandoned rail tunnels, past wild backcountry while the other group heads to the river to discover the secrets of this special waterway, by **jet boat**, and the role it's played in the life of the region. Then, we come together to enjoy a hearty country lunch before the groups swap activities in the afternoon. This way we're discovering so much more of this rugged and remote district.

**Day 3:** Today offers a change of pace with a visit to the charming **Nevalea Alpaca Farm** where Leonie and Neville Walker have over a thousand of these charming animals, many of which we'll meet, on their nearly 900 acre property. Our next stop is **Paddy's Hill Farm** and the magnificent garden of Melana and Simon Bradley. Here we'll enjoy a guided tour of the garden before sitting down to a high tea style lunch. Perhaps after lunch there'll be time to test your putting abilities on their private 9-hole mini golf course. Then it's off to visit our second '*Garden Of National Significance*' of the day at **Omaka Lodge** where owners Christopher and Scott will show us around the garden, surrounding the lodge, with its many garden 'rooms'. What a day visiting these jewels of the King Country.



**Day 4:** We journey home via beautiful **Lake Maraetai**, at Mangakino, and **Taupō**, bringing with us rich memories of a truly unique and scenic escape.

This is a rare chance to explore one of the overlooked regions of New Zealand in comfort and style – a tour filled with charm, history, and the wonders of nature.

## Tour No. 110725 & 110925 Hawkes Bay Garden Affair #1 & #2



Bay Tours are delighted to introduce an opportunity – over two days – to visit some of the finest private gardens in Hawke's Bay, and all in aid of the wonderful **Riding For The Disabled** service based in Hastings. Since the formation of Riding For The Disabled in New Zealand more than 50 years ago, Hawke's Bay has been at the forefront and **Hawke's Bay**

**Garden Affair** is a registered charity whose purpose is to create and manage this major fundraiser event for the group.

Nearly 30 of the finest gardens in Hawke's Bay, most of which are private and not usually open for visitors, will welcome ticket-holders of **Hawke's Bay Garden Affair**, in all their late-Spring glory, to support this wonderful cause. And Bay Tours will be right there.

Whilst we are privy to the incredible list of gardens that will be involved, the information cannot be made public until after the tickets are released, to ensure the continued privacy of the property owners who have so generously agreed to be involved.

However, we can tell you that the scope of gardens is huge. From farm & country house gardens to the private playgrounds of prominent Hawke's Bay families and virtually hidden gardens that even their neighbours don't know the scale of. The list is stellar!

Hawke's Bay Garden Affair ranges over 3 days from the 7<sup>th</sup> to the 9<sup>th</sup> of November.

We have created **two distinct and completely different itineraries** for the first and last days of the event, selecting what we think is a fine cross-section of thrilling gardens to visit. We'll visit **15 gardens** across the 2 days. So, with a days' break in-between, the keenest amongst us can book for both days knowing there's no double-up on anything.

## Tour No. 110725 Hawkes Bay Garden Affair #1

Date	Friday 7 <sup>th</sup> November
Times	All collected by 9.40am
Cost	<b>Patron Special: \$165.00</b> Member: \$185.00
Payment	Full payment upon booking please
Price includes	Door to door transport, lunch



We will visit **7 gardens** today, all in and around the beautiful **Tuki tuki River Valley** and each primed and perfect for our visit. A picnic lunch has been arranged at one of the gardens.

## Tour No. I I0925 Hawkes Bay Garden Affair #2

Date	Sunday 9 <sup>th</sup> November
Times	All collected by 10am
Cost	<b>Patron Special: \$170.00</b> Member: \$190.00
Payment	Full payment upon booking please
Price includes	Door to door transport, lunch

This day features **8 gardens** situated from Puketapu, where we'll also have lunch at the pub, to Havelock North.

Both these days will be remarkable in the range of gardens on show. And in booking either, or both, tours you'll do so knowing that you're supporting an extremely important service to the disabled community of Hawke's Bay.

**Places on each of these days are strictly limited, so don't delay in securing your seat.**



## Tour No. I I I I25

### Tina the Ultimate – Dinner & Show

Date	Tuesday 11 <sup>th</sup> November
Times	All collected by 5pm
Cost	Patron: \$225.00 Member: \$255.00
Payment	Full payment upon booking please
Price includes	Door to door transport, dinner, premium ticket to show

**TINA**  
The Ultimate Tribute to  
The Queen of Rock 'n' Roll  
Starring  
*Caroline Borole*



Get ready for a night of powerful vocals, big hits, and the incredible story of a music legend – it's time for **Tina the Ultimate**, a tribute concert celebrating the life and legacy of the one and only Tina Turner! Featuring the powerful, raspy vocals, high-intensity dancing and thrilling stage presence of South African Caroline Borole, complete with her international band,

brass section, backing vocalists and dancers to making this SIMPLY THE BEST tribute to the Queen of Rock 'n' Roll, Tina Turner.

Our evening begins at the popular **Shed 2 Restaurant**, where we'll enjoy a delicious **2-course dinner**. Then it's just a short hop over to the **Napier Municipal Theatre** for the show.

Hear all the energetic rock and soulful RnB hits that made Tina one of the 20<sup>th</sup> century's biggest names in music: *(Simply) The Best, What's Love Got To Do With It, River Deep Mountain High, Proud Mary, Nutbush City Limits, We Don't Need Another Hero, What You Get is What You See, Private Dancer, It Takes Two* and many more.

Don't miss this fabulous evening of music and memories – a celebration of strength, soul, and sensational rhythm!



## Tour No. 111525 Cross Hills Gardens Country Fair

Date	Saturday 15 <sup>th</sup> November
Times	All collected by 7.20am
Cost	Patron: \$205.00 Member: \$230.00
Payment	Full payment upon booking please
Price includes	Door to door transport, morning tea, lunch, gardens & fair entry

Spring will be in full bloom – and there’s no better way to celebrate than with a day at the much-loved **Cross Hills Gardens Country Fair**, nestled among 18 acres of spectacular private gardens in Kimbolton.

We’ll begin with a refreshing morning tea in Dannevirke, before arriving at the fairgrounds just in time to explore over **215 hand-picked stalls** offering everything from artisan crafts and local produce to garden wares and handmade treasures. With live music, international food stalls, and winding garden paths bursting with colour, this is a delightful day out for lovers of markets, gardens, and all things beautifully made.

Take your time to browse, shop, and soak up the festive atmosphere.

Don’t miss this blooming wonderful fair – a true highlight on the spring calendar!



## Tour No. 112125 Wairarapa Garden Festival

Date	Friday 21 <sup>st</sup> – Sunday 23 <sup>rd</sup> November
Times	All collected by 8.15am
Cost	Patron: \$1,495.00 Twin Share   \$1,725.00 Single Room Member: \$1,695.00 Twin Share   \$1,950.00 Single Room
Payment	\$500.00 upon booking, balance due Friday 26 <sup>th</sup> September
Price includes	Door to door transport, accommodation x2, breakfast x2, morning tea, lunch x3, dinner x2, garden festival entry



Join us for a blooming marvellous weekend away as we explore the charm, colour, and creativity of the **Wairarapa Garden Festival** – a true highlight of the spring calendar. The Wairarapa has some of the finest and best-established gardens you’ll find anywhere.

Once all participating gardens are confirmed, we’ll pick our route to highlight the best of what’s on offer including scenic garden trails, opportunities to meet the gardeners themselves and, of course, the Market Fair.

**Day 1:** We begin our getaway with an elegant high tea lunch at **Tirohana Estate** in Martinborough, followed by an afternoon with owners Sarah and Warwick at the inspiring **Stablehouse Garden** before settling in at our base, the **Copthorne Solway Hotel** in Masterton.



**Day 2:** Saturday is a garden-lover's dream! We'll spend the day exploring a selection of stunning private gardens, enjoying the vibrant colours and serene landscapes of **Northern Wairarapa**, each offering something unique – from cottage charm to contemporary landscape design. Immerse yourself in the beauty of carefully curated gardens. A delicious **picnic lunch** will keep us well-fed along the way, and in the evening, we'll dine at the

excellent **The Farriers Eatery**.

**Day 3:** We visit a few final favourites before wrapping up our tour with lunch and a visit to **Pūkaha National Wildlife Centre**, for which the Garden Festival is a fundraiser, where you can enjoy native bush, wildlife, and even the popular eel feeding experience. A refreshing, floral-filled weekend with like-minded travellers – perfect for garden lovers and those who simply enjoy the beauty of spring.

## Tour No. 112425

### A Celtic Christmas – Dinner & Show

Date	Monday 24 <sup>th</sup> November
Times	All collected by 5.15pm
Cost	Patron: \$240.00 Member: \$270.00
Payment	Full payment upon booking please
Price includes	Door to door transport, 2 course dinner & premium ticket to show

Celebrate the festive season with an enchanting evening of fine dining and world-class entertainment.

Our night begins with a delightful **2-course dinner** at **Shed2**. Following dinner, we'll make our way to the **Napier Municipal Theatre** for **A Celtic Christmas by A Taste of Ireland**. This acclaimed production brings the magic of an Irish Christmas to life, featuring former World Irish dance champions and stars from **Lord of the Dance** and **Riverdance**. Experience a captivating blend of traditional Irish music, heartwarming storytelling, and exhilarating dance routines that promise to leave you spellbound.

Set against the backdrop of a snow-dusted Ireland, the show follows the romantic tale of two star-crossed lovers, Oisín and Ava, whose journey unfolds through energetic jigs, heartfelt ballads, and festive carols. The performance is a tapestry of Irish culture, showcasing the talents of world-renowned dancers and musicians in a celebration of love, resilience, and the joyous spirit of Christmas. Kick off your festive season with some Irish flair!



## Tour No. 112625

# Great Barrier Island Escape & Garden Festival

Date	Wednesday 26 <sup>th</sup> November – Monday 1 <sup>st</sup> December
Times	All collected by 7.15am
Cost	Patron: \$3,995.00 Twin Share   \$4,695.00 Single Room Member: \$4,395.00 Twin Share   \$5,165.00 Single Room
Payment	\$800.00 upon booking, balance due Wednesday 1 <sup>st</sup> October
Price includes	Door to door transport, accommodation x5, breakfast x5, lunch x5, dinner x5, garden festival ticket, flights



Without a doubt the jewel in the crown of the beautiful Hauraki Gulf is **Great Barrier Island**. This almost mystical place, 100km northeast of central Auckland, has always seemed so far away and 'other-worldly' and yet, always part of the New Zealand idyll.

These days it's easier to get there than ever before. So, we're going to spend time, over **6 Days**, with the locals experiencing one of New

Zealand's last untouched paradises. This time will allow us to enjoy everything at 'Island pace'. AND this specific tour will include the inaugural **Great Barrier Garden festival**. Here's a glimpse at what's in store;

We fly first to **Auckland** and then on to **Great Barrier Island** itself. Enjoying spectacular views of the Hauraki Gulf and Waiheke Island before landing at **Claris** and being met by our host, Leigh, who'll be showing us around.

Over the next few days we'll enjoy a wonderful series of spectacular, scenic destinations like **Medlands Beach**, **The Windy Canyon**, **Pacific Ocean Panoramas** and the 'Forgotten Wharf' at **Blind Bay**. We'll meet the locals and hear the stories at community spots such as **Tryphena Wharf**, **Shoal Bay Estate**, **The Barrier Social Club** and **Jacque's Haven**.

We'll take a cruise aboard the launch '**Sundancer**' up the island's west coast past old Kauri sawmills and deserted whaling stations, then head through the spectacular **Broken Isles** and **Man-O'-War Passage**. At **Port Fitzroy** we'll disembark and visit the amazing **Glenfern Sanctuary**, a predator-free forest, where we'll be guided around their native plant and bird reintroduction facilities and up to **Sunset Rock** for jaw-dropping panoramic views of **Port Fitzroy Harbour** itself.

How about a walk along a gentle forest track bound by ancient **Nikau Palms** to **Hot Springs** for a soak? Visit **Okupu Beach** to see some truly ancient Pohutakawa trees and take a look around an organic farm known as **Okiwi Passion**.

All this whilst staying at Leigh's own **Sunset Waterfront Lodge**, just a few metres from the water's edge in Shoal Bay. And, for the first time, this tour will include an extra day dedicated to the **Great Barrier Island Garden Festival** where we'll visit a number of the best private gardens on the island that are not usually available to visit. The festival will culminate with a Gala Dinner hosted in the Marquee at Sunset Lodge. What a tremendous bonus to our tour this extra day will be.

For many, a trip to **Great Barrier Island** is a 'bucket-list' item. The opportunity to visit this iconic maritime region of New Zealand is rare. This is the chance you've been waiting for, encompassing all the levels of Bay Tours service you've come to expect.

Numbers are limited to 15, you'll need to **book early** to join this tour.





## Tour No. I12725

### Spring Country Progressive Lunch

Date	Thursday 27 <sup>th</sup> November
Times	All collected by 11.45am
Cost	<b>Patron Special: \$140.00</b> Member: \$170.00
Payment	Full payment upon booking please
Price includes	Door to door transport, 3 course lunch



*Three delightful courses, three charming locations, one unforgettable afternoon!*

Celebrate the joys of spring with a leisurely day of culinary discovery as we meander through the beautiful Puketapu and Bay View countryside. Our progressive lunch begins at the rustic and relaxed **Shed 530**, now fully restored after the ravages of Gabrielle, where we'll enjoy a mouthwatering **Entrée** featuring a selection of

locally inspired dishes. Then it's just a short hop to the beloved **Puketapu Pub**, where Mary and Sam Danielson have a hearty and delicious **Main** course awaiting us in this classic country pub setting. Finally, after a lovely country drive through back country roads to Bay View, we'll wrap up our afternoon at the charming **Crab Farm Winery**, indulging in a delectable **Dessert** with views across the vines.

This is a wonderfully social day out, perfect for catching up with friends old and new, over fine food and beautiful surroundings. All the work is done for you—just bring your appetite and your love of good company! Book early for this springtime favourite!



## Tour No. I20225

### Marlborough Sounds – An Exploration

Date	Tuesday 2 <sup>nd</sup> – Tuesday 9 <sup>th</sup> December
Times	All collected by 9.15am
Cost	Patron: \$9,555.00 Twin Share Salvin Cabin, \$11,185.00 Twin Share Royal Cabin, \$10,095.00 Single Wandering Member: \$10,590.00 Twin Share Salvin Cabin, \$12,305.00 Twin Share Royal Cabin, \$11,105.00 Single Wandering
Payment	\$2,500.00 upon booking, balance due Tuesday 7 <sup>th</sup> October
Price includes	Door to door transport, accommodation x7, breakfast x7, dinner, Cruise incl drinks package & all meals onboard, flights

Since the incredible experience of our first group venture into Fiordland aboard the vessel **Heritage Explorer** in 2022, we have been wanting to experience the **Marlborough Sounds** with them. Anyone who has been on one of our weeks in the deep south on **Heritage Explorer** will tell you how memorable it is.



In early **December 2025** we will be exploring the **Marlborough Sounds** in-depth. Famed for the breath-taking beauty of its winding cobalt waterways, iconic landscapes, lush native

forests, wildlife and remote coastlines, the region is also rich in early New Zealand history and the location of some of the country's most important conservation efforts. The opportunity to reach parts like **d'Urville Island**, **French Pass**, **Tawhitinui Reach** and both **Pelorus** and **Kenepuru Sounds** is rare, and our **7 Day** expedition aboard **Heritage Explorer** with her expert crew will allow us the time to really get beneath the surface of these fascinating spots. Here's a summary of what you can look forward to;

**Day 1:** Our adventure begins when we meet our fellow voyagers at Hawke's Bay Airport. We fly to **Blenheim** where we'll transfer to our hotel, the wonderful **Chateau Marlborough**, for the night in readiness for tomorrow.



**Day 2:** After a hearty breakfast our journey begins in earnest as we're collected from the hotel and we transfer by road to **Havelock** at the head of **Pelorus Sound**. Here the Captain and Expedition Team will be waiting to welcome you aboard **Heritage Explorer** and show you to your cabin. You'll have the opportunity to familiarise yourself onboard before joining your fellow travellers and your Expedition Team as we set sail along Pelorus Sound this afternoon and into **Kenepuru**

**Sound** where we'll anchor for the night.

**Days 3 & 4:** After exploring **Kenepuru Sound** this morning, including our first use of the Zodiac tender craft, we'll return to **Pelorus Sound** and into **Nydia Bay** and the more active amongst us can enjoy walking part of the **Nydia Track**. There's lots of bays to explore as we make our way towards **Tawhitinui Reach** and one of the many picturesque anchorage spots for the night. The morning sees us continuing northward along **Pelorus Sound**, the largest in Marlborough. With 380kms of remote coastline, Pelorus sits in silent splendour and ready for careful exploration. Nature envelopes us at **Ngawhakawhiti Bay** where it's possible to get a feel for what the Sounds would have been like before the native forest was cleared. Tonight, we drop anchor before we reach open water at the mouth of the sound.

**Day 5:** Today we sail through notorious **French Pass**, which features the fastest moving tidal flows in New Zealand, in the wake of French explorer Dumont d'Urville and then explore the island named in his honour. The outermost island in the Marlborough Sounds, **d'Urville** features imposing sea cliffs along its west coast, a high mountainous backbone and some of the country's finest peninsula scenery. **Dolphins** and **Fur Seals** are common in the waters surrounding the island and it's from here that *Pelorus Jack*, the endearing Risso's Dolphin who famously stole the nation's heart, guided ships across the dangerous waters of the Cook Strait between 1888 and 1912.

**Days 6 & 7:** First sighted by Abel Tasman in 1642, it was Captain James Cook aboard *Endeavour*, who would first set foot in **Queen Charlotte Sound** and make **Ship's Cove** his base during his five visits between 1770 and 1777. We'll spend two days exploring the waterways and islands of this spectacular sound with opportunities to head ashore and walk a section of the **Queen Charlotte Walkway** as well as visiting the birdlife on predator-free islands. A visit to **Tory Channel**



brings the history of the Perano Whalers to life. We'll also spend time in **Ship's Cove** itself and learn its history, exploring the Cove and visiting the remote **Captain Cook Memorial** inaugurated in 1913. **Blumine Island** is another conservation success story with rare birds like the Orange-fronted Parakeet and South Island Saddleback both now thriving on the island after being translocated. On our final night together, we'll enjoy a farewell dinner and look back on the highlights of the last week.

**Day 8:** We arrive into the inner reaches of **Queen Charlotte Sound** and after a final breakfast and farewells we disembark at **Picton** & transfer to Blenheim Airport for our flights home to **Hawke's Bay**.



**Heritage Explorer** will be our floating home for the 7 days we explore. It's a 30-metre, 4-deck New Zealand flagged vessel built in 2004 and features a contemporary wood-finished interior, 10 well-appointed ensuite cabins across three decks, a dining room boasting spectacular 180-degree panoramas and theatre capabilities; lounge and bar featuring a flight of inclusive regional New Zealand wines,

beers and spirits; and a well-stocked local library. Outside, guests can enjoy plenty of covered space on the Bridge Deck or relax on the Sun Deck perfect for wildlife spotting, sunrises and sunsets, or simply enjoying watching your **Heritage Explorer** voyage unfold. Kayaks and fishing equipment are available for use during the voyage, while two tender craft allow for deeper exploration and the unforgettable wildlife encounters synonymous with all Heritage Expeditions adventures. **Heritage Explorer** has an open bridge policy and a full commercial kitchen helmed by a talented chef focused on highlighting local produce and any guest catches of the day, as well as an enthusiastic and passionate expedition team, and will be staffed by a New Zealand captain and crew.

The expedition vessel features state-of-the-art technology to provide a comfortable cruising experience with high performance dual Scania 653 engines, bow thrusters, fin stabilisers, full air-conditioning, sound attenuated twin generators and a hydraulic aft ramp, while a comprehensive navigation package ensures the ultimate Kiwi adventure awaits all guests.



The **Marlborough Sounds** is an area many New Zealanders have travelled through on their way to somewhere else. But few have the opportunity to spend time exploring this magnificent, diverse, historic maritime marvel. Come and enjoy the tranquility of Marlborough's glittering waterways, under the warmth of December sun, and be part of an extraordinary adventure which will change the way you view this unique part of New Zealand.

**Places are strictly limited, so don't delay!**



## Tour No. I20325 Kapiti & Matiu/Somes Islands

Date	Wednesday 3 <sup>rd</sup> – Saturday 6 <sup>th</sup> December
Times	All collected by 9.15am
Cost	Patron: \$2,095.00 Twin Share   \$2,615.00 Single Room Member: \$2,405.00 Twin Share   \$2,925.00 Single Room
Payment	\$750.00 upon booking, balance due Wednesday 8 <sup>th</sup> October
Price includes	Door to door transport, accommodation x3, breakfast x3, morning tea x2, lunch x3, dinner x3

It's been a couple of years since Bay Tours visited either magnificent **Kapiti Island** or mysterious **Matiu/Somes Island**. Historically notable as the stronghold of Ngāti Toa Rangatira Te Rauparaha, since 1897 conservationists have worked to gradually return



Kapiti Island to its original splendour. Today the island is one of New Zealand's most valuable nature reserves and bird sanctuaries. Burgeoning numbers of smaller birds like kakariki (red-crowned parakeet), robin, bellbird, saddleback and stitchbird join kokako, takahe, kereru (NZ wood pigeon), kaka and weka in abundance. In contrast to Kapiti, Matiu/Somes Island, which is the largest island in Wellington Harbour, has spent much of the last 140 years trying to keep

its inhabitants ON the island rather than stopping them from coming ashore. Its harbour location made it an ideal position for the country's first inner harbour lighthouse, a human quarantine station, an internment camp, military defence position and animal quarantine station. Basing ourselves at lovely **Raumati South**, our tour will include a full day spent on Kapiti Island hosted and guided by local experts, as well as an exploration of the many historical sites of Matiu/Somes Island. Here's a summary of the tour;

**Day 1:** Departing Hawke's Bay we enjoy a cuppa at Waipawa and make our way to **Palmerston North** and lunch at the splendid **Elm Café**. After lunch we make our way to the Kapiti Coast and our home for the next 3 nights, the lovely **Raumati Sands Resort**. This evening we enjoy a special dinner at the renowned **50/50 Restaurant** in Paraparaumu Beach.

**Day 2:** Today we will spend the day on **Kapiti Island**, beginning with biosecurity checks at Paraparaumu Beach before we take the boat across to the island itself. Our visit will include guided walks that focus on the history of the island before the arrival of humans and will point out the unique flora and fauna that thrives there. We'll enjoy a hosted lunch with the only family permitted to live on Kapiti Island plus there'll be plenty of free time to explore the island at your leisure. The seaside vibe continues over dinner at the wonderful **Waterfront Kitchen** right on the beach near our hotel.



**Day 3:** We make our way to Wellington and take the harbour ferry to spend the morning exploring **Matiu/Somes Island** in Wellington Harbour. Check out the historic quarantine stations and WWII gun emplacements as well as the lighthouse – still in operation –



together with the stunning views all around the harbour and up the Hutt Valley. We reboard the East By West ferry at lunchtime and carry on across the harbour to beautiful **Days Bay**. After a leisurely lunch at **The Pavilion** we make our way back to Raumati via Petone and the picturesque Pauatahanui Inlet.

**Day 4:** A special treat awaits us this morning.

We depart Raumati and travel back into the Hutt Valley over Hayward's Hill. At Trentham, in the shadow of the massive former General Motors assembly plant, we find **Cars Inc.** A mix of café and classic car collection and the personal passion of Paul Boden. We'll have morning tea here before Paul shows us around the car collection. We then make our way through the lovely Wairarapa, stopping briefly at **C'est Cheese Deli** in Carterton for a taste of their delicious products before it's on to **Greytown** for lunch & a wander of this beautiful country town. We wend our way home this afternoon.

The islands and gardens we'll visit on this tour are unique treasures of our country, preserving flora and fauna of all kinds and much of the social history of settlement in the Wellington region too. It is a privilege to have access to these sites – some private, some difficult to get to. Join us on a pilgrimage to a few of our country's most special places.

## Tour No. I20525 Herbs & High Tea: Weleda Garden & Mangapapa

Date	Friday 5 <sup>th</sup> December
Times	All collected by 10.15am
Cost	Patron: \$180.00 Member: \$210.00
Payment	Full payment upon booking please
Price includes	Door to door transport, high tea & garden entry

Join us for a graceful and fragrant day out that will delight your senses and soothe the soul. Our adventure begins with a peaceful stroll through the enchanting **Weleda Gardens** in Havelock North, where you'll discover the healing herbs and biodynamic philosophy behind their natural skincare. We'll enjoy a guided tour of the garden and historic 'Peloha' homestead, with time to browse their shop afterwards to see if something catches your eye.

Then it's time for a treat! We head to the stately **Mangapapa**, where a beautifully presented **high tea** awaits. Expect fine china, delectable savouries, delicate sweets, all served in elegant surroundings that make you feel just a little bit special.

This is the perfect day out for those who enjoy life's finer, slower pleasures—garden lovers, those interested in holistic healing and anyone in need of a little pampering.



## Tour No. 121125

### Patrons Lunch at No. 5 Café & Larder

Date	Thursday 11 <sup>th</sup> December
Times	All collected by 11.45am
Cost	<b>Patron Special: \$75.00</b>
Payment	Full payment upon booking please
Price includes	Door to door transport, 2 course lunch



Another special 'Patron Only' lunch, this time at the fabulous **No.5 Café & Larder** nestled in rural Karamu. Join us for a delicious **2-course lunch** and enjoy a browse through their excellent gift shop as well. With relaxing rural views and a menu choice that will enchant you, this is the perfect venue for a summer lunch. A great chance for us to say thanks to

you and for you to catch up with Tour Club friends.

## Tour No. 13026

### The Bridge to Nowhere

Date	Friday 30 <sup>th</sup> January – Sunday 1 <sup>st</sup> February
Times	All collected by 8.45am
Cost	Patron: \$1,725.00 Twin Share   \$2,005.00 Single Room Member: \$1,925.00 Twin Share   \$2,215.00 Single Room
Payment	\$500.00 upon booking, balance due Friday 5 <sup>th</sup> December
Price includes	Door to door transport, accommodation x2, breakfast x2, morning tea, lunch x3, dinner x2

Step back in time and into nature as we venture deep into the heart of Whanganui National Park for a truly unforgettable experience – A visit to the legendary **Bridge to Nowhere**.

Soldiers returning from WWI were balloted land in the isolated **Mangapurua Valley**. But with no road access the hard life and meagre income that the rugged land offered up was near impossible to endure. Through the 1920s many of the families up the valley simply walked off their land. And by the time the government got



around to completing the promised permanent bridge across the stream in 1936, finally giving road access, there were few families left farming there. When funds for the maintenance of the road to the bridge were declined in 1942 the remaining families packed up and left. In the decades since, the bush has reclaimed the farmland and the road in as well. Only the bridge itself, now seemingly sitting in pristine wilderness, remains as a reminder of human occupation. Here's a summary of our trip into this 'other-worldly' place; Day 1: Our adventure begins with a leisurely drive to **Ohakune**, taking in morning tea at **Kuripapango**, a delicious lunch stop at **Flat Hills**, and a pause at the poignant **Tangiwai Memorial** before settling into the elegant **Powderhorn Chateau**.

Day 2: Today we journey by **jet boat up the Whanganui River**, with its steep banks of native bush, to the start of an easy 50-minute guided walk to the mysterious bridge that



stands as a monument to dreams abandoned and communities lost to time. After a **picnic lunch beside the bridge**, when we'll hear stories from our local expert whose family were involved in its construction, we return via river to **Pipiriki** and drive the River Road to visit the beautiful historic church of St Joseph's at the isolated riverside settlement of **Jerusalem** before returning to our accommodation in Ohakune.

Day 3: On our final day, we collect a sweet treat from the iconic **Johnny Nation's Bakery in Ohakune**, to enjoy with our **picnic lunch beside Lake Taupō**, and journey home, full of stories and memories.

## Tour No. 20826

### South of the South

Date	Sunday 8 <sup>th</sup> – Wednesday 18 <sup>th</sup> February
Times	All collected by 8.45am
Cost	Patron: \$7,485.00 Twin Share   \$8,615.00 Single Room Member: \$8,235.00 Twin Share   \$9,485.00 Single Room
Payment	\$1,500.00 upon booking, balance due Friday 12 <sup>th</sup> December
Price includes	Door to door transport, accommodation x10, breakfast x10, morning tea x2, lunch x7, dinner x10, flights



From pristine Fiordland on the southern west coast to unique Stewart Island and eastward to The Catlins, we'll explore the deep south led by our own son of the South.

Bay Tours owner Ken Withington is Southland born and bred and with wife Kerren, will lead this **11-day** pilgrimage back to his roots and show off the scenic grandeur and southern hospitality of **The South of the South**.

**Day 1:** We fly to beautiful **Queenstown** this morning where Ken will meet us with the Bay Tours coach and then it's a wonderful scenic drive to **Te Anau** where we settle into our hotel.

**Day 2:** Our exploration of **Fiordland** begins today with a trip into **Doubtful Sound** via **Lake Manapouri** and the **Wilmot Pass**. Three times longer than Milford Sound and ten times the surface area, a cruise of remote **Doubtful Sound** will reward with abundant wildlife and incredible vistas and birdsong.

**Day 3:** An amazing morning awaits as we cross **Lake Te Anau** and experience a guided tour of the hugely popular **Te Anau Glowworm Caves** by path and small boat. On our return to Te Anau you have a Free Afternoon with perhaps a visit to the **Te Anau Bird Sanctuary** for those interested.

**Day 4:** Today we take the world-renowned road, including the **Homer Tunnel**, to iconic **Milford Sound** for an astounding scenic cruise around one of this country's greatest natural wonders. Then we're back to **Te Anau** for the night.

**Day 5:** We begin our day with a visit to the most impressive private military museums we've ever seen. Then it's a skip and jump down the road for morning tea at **Keplar Mountain View Alpacos**. We then depart Te Anau and enjoy a picnic lunch at the famous **Clifden Suspension Bridge**. From here we continue south east to **Riverton** on the south coast and on to Kens' hometown – **Invercargill** for the next couple of nights.



**Day 6:** In the morning we're off to **Bluff** for a tour of NZ's southern-most distillery and the adjacent Paua Farm. Then it's the incredible **Maple Glen Gardens** for lunch and time to wander this magnificent place.

**Day 7:** Today we're off to **Stewart Island** by plane and we'll enjoy a guided tour of the island on arrival. Enjoy some leisure time in the afternoon for bush or beach walks. After dinner in **Oban** there will be an **OPTIONAL: Kiwi Spotting Night Tour** for the hale and hearty.

**Day 8:** Today we take the water-taxi to **Ulva Island Bird Sanctuary** for a gentle guided amble around this unique environment where they say the bird life is so friendly, they'll come too close for your camera lens.

**Day 9:** We farewell the beauty and hospitality of Stewart Island this morning and return to the mainland where we make our way to jaw-dropping **Bill Richardson Vintage Truck Museum**, firstly for lunch in the café and then for a nostalgic view of over 200 stunningly restored vehicles and transport memorabilia. This afternoon we have free time to explore Invercargill at leisure.

**Day 10:** We depart Invercargill this morning and, continuing our journey eastward, into **The Catlins** area of eastern Southland. We'll visit the astonishing 'Petrified Forest' at Curio Bay, take in the incredible views of the Great Southern Ocean from Florence Hill and check out the beach at Kaka Point. A wonderful day spent wending our way through this remote wonderland with lighthouses, waterfalls, pristine harbours and lounging sea lions. Then suddenly we're in **Dunedin!**

**Day 11:** We say farewell to southern hospitality and fly directly from Dunedin back to 'the Bay'. This expansive tour takes in so many breath-taking places and experiences that it will remain with you for ever. With the insight and local knowledge that Ken and Kerren bring, this tour is a once in a lifetime 'Bucket List' experience not to be missed. Come join us ... but hurry, as numbers are limited.



## Tour No. 21926, 22026 & 22126 Edinburgh Military Tattoo – Auckland #1, #2 & #3

Date	#1 – Thursday 19 <sup>th</sup> – Friday 20 <sup>th</sup> February #2 – Friday 20 <sup>th</sup> – Saturday 21 <sup>st</sup> February #3 – Saturday 21 <sup>st</sup> – Sunday 22 <sup>nd</sup> February
Times	All collected by 7.30am
Cost	Patron: \$890.00 Twin Share   \$995.00 Single Room Member: \$1,005.00 Twin Share   \$1,105.00 Single Room
Payment	\$300 upon booking, balance due by Monday 5 <sup>th</sup> January (ticket cost is non-refundable)
Price includes	Door to door transport, accommodation, breakfast, morning tea, dinner, covered seating show ticket



Join us for a truly unforgettable overnight escape to witness the stirring spectacle of the world-renowned **Edinburgh Military Tattoo**, performed under the stars at Auckland's iconic **Eden Park**. This internationally acclaimed event brings together military bands, cultural performers, dancers, and precision drill teams from across the globe for an awe-inspiring display of music, ceremony and tradition. With its dramatic lighting, rousing performances, and moving tributes,

the Tattoo is an experience like no other – and it’s coming to Aotearoa for a strictly limited season.

To ensure no one misses out, we are offering three identical tours timed to match all show dates – Thursday 19th, Friday 20th, and Saturday 21st February. Each tour begins with a comfortable morning departure from Hawke’s Bay, followed by morning tea in Taupō, and a lunch stop in the quirky village of Tirau. By mid-afternoon, we’ll arrive at **Auckland’s Waipuna Hotel**, a long-time Bay Tours favourite. After time to freshen up, we’ll enjoy a delicious buffet dinner at the hotel before boarding the coach for Eden Park.

With premium seats secured in Sections 410 and 411, you’ll have a great view of the pageantry and performance unfolding before you. From the booming sound of massed pipes and drums to the delicate steps of highland dancing and the thunderous excitement of military precision displays, the Edinburgh Military Tattoo is both deeply moving and immensely entertaining. A 20-minute interval offers a chance to stretch your legs before the spectacle continues and concludes in signature style.

With three dates to choose from and limited tickets for each, we recommend booking early to avoid disappointment. Come and be part of something truly special – an evening of music, culture and pageantry that will stay with you long after the final salute.

## Tour No. 22526 Exploring Tasmania

Date	Wednesday 25 <sup>th</sup> February – Tuesday 10 <sup>th</sup> March
Times	All collected by 12pm
Cost	Patron: \$9,895.00 Twin Share   \$12,395.00 Single Room Member: \$10,895.00 Twin Share   \$13,755.00 Single Room
Payment	\$2000.00 upon booking, balance due Tuesday 16 <sup>th</sup> December
Price includes	Door to door transport, accommodation x13, breakfast x13, morning tea, lunch x5, dinner x13, flights

Across the Tasman Sea from us lies an island bursting with gorgeous scenery and an extensive array of unique wildlife, conveniently fitted into a heart shaped land mass less than a quarter of the size of New Zealand. Here, nearly half the land area is protected through national parks, reserves and UNESCO World Heritage Sites. From the remote and untamed wilderness of the west to the beautiful, untouched white-sand beaches of the east, and from the fertile food &



wine lands of the north to the history-laden towns of the south. This incredible island is **Tasmania**. Following the huge demand for our first tour of Tasmania in 2024, Bay Tours is returning there in late **February 2026** and we’ll spend **14 Days** exploring this incredibly diverse place with all four points of the compass covered and loads in between. Here’s just a taste of what our exciting itinerary has to offer;

**Day 1:** Our tour begins with an afternoon flight to **Auckland** where we overnight ready for our flight to **Tasmania** in the morning.

**Day 2:** This morning we take our direct flight from Auckland to Tasmania’s capital city, **Hobart**. After an orientation tour of the city, we settle into our base for the next four



nights, the centrally situated and exciting new **Crowne Plaza Hotel** with stunning views of the city and harbour.

**Day 3:** We spend today at historic **Port Arthur Convict Settlement**, site of one of Australia's most notorious penal colonies. A guided tour and short harbour cruise provide different perspectives on the convict past. We also visit picturesque **Eaglehawk Neck** and **Pirates Bay**.

**Day 4:** A **FREE DAY** to explore **Hobart**, Australia's second oldest city, at your own pace. You may want to join your Tour Hosts at **Salamanca Markets** in the morning.

**Day 5:** Today we head south of Hobart, following the D'Entrecasteaux Channel, through the beautiful **Huon Valley** to visit the seaside town of **Margate** which offers shopping with a real difference. Then it's on for lunch at **Crawleighwood**, a private garden renowned for its maple woodlands and ancient Gondwanaland plantings. Later we visit Hobart's historic **Shot Tower**.



**Day 6:** We say "Farewell" to Hobart, for now, and head northwest climbing onto the **Central Plateau**. Amaze at '**The Wall In The Wilderness**', an astonishing work of art depicting the history of Tasmania's Central Highlands. Notice the changing landscape as we descend the Chamouni Valley to the copper mining town of **Queenstown**. Finally, we arrive at **Strahan Village** on the west coast, our home for the next two nights.

**Day 7:** Today we board the giant '*Spirit Of The Wild*' catamaran to cruise across **Macquarie Harbour** and up the **Gordon River** into the heart of Tasmania's wilderness. Ancient sassafras and myrtle rainforest lead us to **Heritage Landing** where we can go ashore amidst this incredible environment. After lunch onboard we voyage to **Hell's Gates** past **Sarah Island** – the worst convict settlement of them all. A full day's cruising concludes back at **Strahan** where there's time to explore the village before dinner. In the evening, enjoy an open-air performance of '*The Ship That Never Was*'.

**Day 8:** Continuing north we arrive at **Cradle Mountain National Park** and enjoy a guided 4WD tour including **Dove Lake** and **Waldheim Chalet** before we resume our journey northwards to the outskirts of Tasmania's second city, Launceston, where we settle into our accommodation at the elegant **Country Club of Tasmania**.

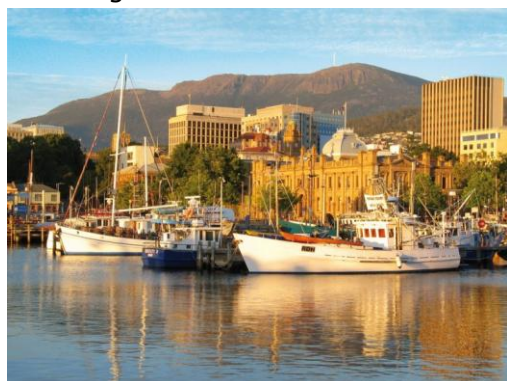
**Day 9:** It's an early start this morning as we head west to the historic village of **Stanley** nestled at the foot of an ancient volcano. Time to explore the town here & perhaps take the chairlift to the summit. Later we return eastward through the region known as the **Great Western Tiers** and visit the unique '*Yarns Artwork In Silk*' exhibition in the town of **Deloraine**.

**Day 10:** This morning, we begin by visiting the dramatic **Cataract Gorge** in the middle of Launceston, before we continue our journey eastward through the former tin-mining towns of Scottsdale and Derby. We stop to admire the famous **War Memorial Tree Carvings** at **Legerwood** and **St Columba Falls** before arriving on the east coast and our overnight accommodation at pretty **St Helens**.

**Day 11:** Turning south, we follow the white-sand beaches of the east coast before visiting **East Coast Natureworld Wildlife Sanctuary** at **Bicheno** where we'll encounter the famous Tasmanian Devil, Wombats, Echidnas, Kangaroos & Wallabies as well as native birds and reptiles. After a seafood lunch we visit ocean blowholes and indulge in some locally



made ice cream, finally crossing the **Derwent River** back into **Hobart** from the east and checking back into our wonderful **Crowne Plaza Hotel**.



**Day 12:** No visit to Hobart would be complete without a ferry trip up the Derwent River to **Berriedale** and the amazing **MONA** (Museum of Old and New Art). Created by the unconventional businessman and art collector, David Walsh, this complex of breathtaking architecture combines museum, art gallery, restaurants, music venues and open spaces that will captivate and engage you.

**Day 13:** A last **FREE DAY** in **Hobart** lets you revisit favourite spots or discover new ones at your own pace. Or simply relax and re-charge after our travels of the previous days. Tonight, we enjoy a farewell dinner together at a local waterfront restaurant.

**Day 14:** Today we say our final farewells to Hobart and Tasmania and fly back to **Auckland** and then onward to **Hawke's Bay** and our homes.

Couple this exciting itinerary with the reassuring level of care, service and attention to detail that familiar travellers have come to expect from Bay Tours and 'Exploring Tasmania' is a must-do experience.



## Tour No. 30526

### Chatham Islands including Festival Day

Date	Thursday 5 <sup>th</sup> – Thursday 12 <sup>th</sup> March
Times	All collected by 9.20am
Cost	Patron: \$6,595.00 Twin Share   \$6,825.00 Single Room Member: \$7,255.00 Twin Share   \$7,525.00 Single Room
Payment	\$1,500.00 upon booking, balance due Thursday 8 <sup>th</sup> January
Price includes	Door to door transport, accommodation x7, breakfast x7, lunch x6, dinner x7, flights

Join our small group tour and experience the absolute uniqueness that is '**The Chathams**'. Trees that lean nearly horizontal, rugged landscapes containing an array of volcanic formations, ancient forest remnants, rolling farmland, sandy beaches, abundant oceans and spectacular ever-changing scenery. The isolation, moody climate and history that includes Moriori, Māori, sealers, whalers, missionaries, farmers and settlers gives them a strong community spirit. From Hawke's Bay we'll fly, via **Wellington**, into the **Chatham**



**Islands** where our home for the next **7 nights** will be **Hotel Chatham**. During our visit, we'll explore it all. Highlights will include the views from the 200m high **Rangi Ika Cliffs**, the life size statue of **Tommy Solomon**, the last known full blooded Moriori, visit **Blind Jim's Creek** and search the coastline for **fossilized shark's teeth**. Also, the beautiful **Hapupu National Reserve** Moriori Tree Carvings, enormous **Basalt Columns**, **Port Munning Seal Colony**, **Kaingaroa Fishing Village** and much, much more. And this year the trip will coincide with the island's annual '**Day Out**', when the whole community comes together in a festival-like format to celebrate the islands' unique way of life. The warmth of the local hospitality is legendary, and the quality of the seafood will astound you. This is a bucket-list trip for many and we can't wait to show you around.

## Tour No. 30726 Martinborough Fair

Date	Saturday 7 <sup>th</sup> March
Times	All collected by 6.45am
Cost	Patron: \$140.00 Member: \$165.00
Payment	Full payment upon booking please
Price includes	Door to door transport, morning tea



The Rotary **Martinborough Fair** is held in the picturesque Martinborough Square. This iconic fair, reportedly the largest in Australasia, comprises over **480 stalls** selling artwork, crafts, clothing, food and other quality products. This day trip is one of our most popular year after year and as usual, it'll be an early start in order to provide as much time in **Martinborough** as possible. We'll stop for morning tea on the way and plan to **arrive**

**around 11.30am**. There'll be plenty of time to wander at your leisure (and plenty of space on the coach to stash your goodies). We'll **depart by 3.00pm** and head home, stopping at Woodville Domain to eat what you have purchased from the fair for dinner before the last leg of the journey. This is the fair everyone talks about so come and experience it for yourself.

## Tour No. 31826 Sparkle & Style – One for the Ladies

Date	Wednesday 18 <sup>th</sup> March
Times	All collected by 8.05am
Cost	Patron: \$285.00 Member: \$320.00
Payment	Full payment upon booking please
Price includes	Door to door transport, morning tea, lunch

Ladies, it's time to treat yourselves to a day of indulgence, inspiration, and a little creative flair – all wrapped up in good company and fine style.

We begin our day of culture and creativity with a visit to **MTG** in Napier and also around the corner at **Creative Arts Napier** where Gallery Manager, Tania Wright, will tell us about the artistic network that feeds the gallery and will show us around. Discover local artistic talent and creativity on display. Then we're off to the iconic **National Tobacco Co. Building** in Ahuriri for a sparkling **High Tea experience**, complete with dainty savouries, decadent sweets, and a complimentary drink to accompany lunch.

Then after lunch, having enjoyed some of the creative talents on show here in Hawke's Bay, it's our turn, with the assistance of the professionals, to get a bit arty and a bit crafty ourselves with a fun and truly unique informal **Pottery & Bloom** session. Firstly, Rachel from **Bloom Bouquets** will demonstrate and help each of us arrange a collection of dried flowers into a bespoke bouquet. Then, Karen from **Pottery**





**Experience** will guide us as we each create our own handcrafted vase to display our bouquet. This will include painting them before they're put into the kiln for firing. Each of us will end up with a wonderful keepsake to treasure and remember a truly special day.

## Tour No. 31926 West Coast Experience

Date	Thursday 19 <sup>th</sup> – Wednesday 25 <sup>th</sup> March
Times	All collected by 6.30am
Cost	Patron: \$6,685.00 Twin Share   \$7,655.00 Single Room Member: \$7,495.00 Twin Share   \$8,535.00 Single Room
Payment	\$1,500.00 upon booking, balance due Tuesday 20 <sup>th</sup> January
Price includes	Door to door transport, accommodation x6, breakfast x6, morning tea x2, lunch x5, dinner x6, flights



Of all the destinations we go to with Tour Club members, perhaps the region most shrouded in mystery is the South Island's **West Coast**. The region remains a steadfastly remote part of New Zealand. To even begin to get a feel for the place it takes a few days to get around what is the country's largest region. From the highest mountains and stunning coastal scenery to dense rainforests and everything in between. Steeped in myth and legend

from ancient Maori pounamu (greenstone) trails and Moa hunts to pioneering settlers and tough miner tales, 'the Coast' is a world apart. Where every passing car waves to you and the hospitality is warm and 'old school'.

From Westport in the north to Haast in the south, we'll meander through this fascinating region where the natural environment still dominates every residents' life in some way. Here's a summary of the itinerary;

**Day 1:** We fly to **Wellington** and then on to **Nelson**, where our coach will meet us and we begin our adventure. After lunch in **Murchison**, and a look at the famous **Buller Swing Bridge**, we carry on to the historic mining town of **Reefton** which is experiencing a renewal in recent times. We'll have billy tea with the **Bearded Miners** and sample the local moonshine before we settle into our accommodation at **Dawson's Hotel**.

**Day 2:** We make our way this morning to **Westport** to meet our guide for the day, Mickey, who will take us for a tour of the **Stockton Coal Mine**, New Zealand's largest single coal producer.

We'll drive through several small towns on our way up onto the Stockton Plateau where we'll first have lunch in the 'Smoko Room' before we get a real sense of the workings of this open-cast mining operation, as well as visiting the aerial ropeway which takes the coal down to the railhead at Nakawau. As we start our journey south we'll stop at Punakaiki to see the world-famous **Pancake Rocks** before arriving at the **Scenic Hotel Punakaiki**, our accommodation tonight.



**Day 3:** We stick with the mining theme this morning, as we continue our journey south, stopping firstly to look around the **Brunner Mine Historic Area** – site of New Zealand's

worst mining disaster in 1896. Then it's on to the town of **Blackball** with its famous (not)Hilton Hotel and Blackball Salami Co. Down the road we can still see the remains of the old mine entrance and chimneys. A gentle walk along **Greymouth's** riverside reveals more memories of the regions mining past before we enjoy lunch at the **Theatre Royal Hotel** in Kumara. This afternoon we wander the spectacular **Hokitika Gorge**, with its turquoise water, before we check into the lovely **Beachfront Hotel** in Hokitika.



**Day 4:** Our southerly direction continues today and our first stop is a short boat cruise across the beautiful **Lake Mahinapua** south of **Hokitika**, followed by lunch at the famous **West Coast Treetop Walkway**, a steel causeway that allows you to walk amongst the canopies of ancient temperate rainforest giants such as Rimu and Tamahi. And all 20 metres above the forest floor. Then we continue south through **Ross** and **Hari Hari** to **Franz Josef** where we'll

take a short helicopter flight up to the **Franz Josef Glacier** and step onto this amazing force of nature. What a way to finish an enriching day experiencing the West Coast environment.

**Day 5:** After a night at **Franz Josef**, we continue south to picturesque **Lake Matheson**, the most photographed lake in New Zealand. And with unparalleled views, across the mirror-like surface of the lake itself, of Fox Glacier, Mt Tasman and Aoraki/Mt Cook, you can see why. After a cuppa we head into the UNESCO World Heritage Area that is **Haast**. At this point we leave the main highway, stay with the coast road and arrive at magnificent **Jackson Bay**, on the edge of **Mt Aspiring National Park**, for a glorious waterfront lunch at **The Cray Pot**. After lunch and a look around, we return to the highway and head through the **Haast Pass** towards Lakes Wanaka and Hawea. Tonight, we stay on the shores of **Lake Dunstan**.

**Day 6:** Today we first head up the eastern side of Lake Dunstan to **Tarras** at the foot of the **Lindis Pass** for a cuppa before crossing Hawea Flat to high country **Glen Dene Station**. Bound by **Lake Hawea** in the east and **Lake Wanaka** in the west, **Glen Dene** is 15,000 acres with extensive panoramas back towards the Southern Alps. Our hosts, Sarah and Richard Burdon, will tell us about their property and give us lunch. We can also enjoy their extensive garden. Later we enjoy a scenic drive along the shores of Lake Wanaka to **Glendhu Bay** before stopping at **Warbirds & Wheels**, an aviation and classic car museum next to Wanaka airport. Another fabulous day of vistas and destinations.

**Day 7:** Today we say farewell to the South and take the easy way home by flying from **Queenstown** back home to **Hawke's Bay**.

On this tour we'll spend a week immersed in the very heart of some of the more isolated parts of the South Island getting to know the Westland, Grey, Haast and Hawea districts. An intoxicating mix of natural wonder, heartbreaking history and southern hospitality punctuated by some of the most breath-taking scenery New Zealand can offer. And that's saying something!

Join us and enjoy all the pampering and attention to detail you've come to expect from Bay Tours on this 'Bucket-List' tour.





## Tour No. 32526 Great Barrier Island Escape

Date	Wednesday 25 <sup>th</sup> – Sunday 29 <sup>th</sup> March
Times	All collected by 7.15am
Cost	Patron: \$3785.00 Twin Share   \$4485.00 Single Room Member: \$4165.00 Twin Share   \$4935.00 Single Room
Payment	\$1000.00 upon booking, balance due Wednesday 28 <sup>th</sup> January
Price includes	Door to door transport, breakfast x4, morning tea x3, lunch x4, afternoon tea x2, dinner x4, accommodation x4, all flights



Without a doubt the jewel in the crown of the beautiful Hauraki Gulf is **Great Barrier Island**. This almost mystical place, 100km northeast of central Auckland, has always seemed so far away and 'other-worldly' and yet, always part of the New Zealand idyll.

These days it's easier to get there than ever before. So, once again, we're returning to 'the Barrier' to spend time, over **5 Days**, with the locals to experience one of New Zealand's last untouched paradises. This time will allow us to enjoy everything at

'Island pace'. Here's a glimpse at what's in store;

We fly first to **Auckland** and then on to **Great Barrier Island** itself. Enjoying spectacular views of the Hauraki Gulf and Waiheke Island before landing at **Claris** and being met by our host, Leigh, who'll be showing us around.

Over the next few days we'll enjoy a wonderful series of spectacular, scenic destinations like **Medlands Beach**, **The Windy Canyon**, **Pacific Ocean Panoramas** and the 'Forgotten Wharf' at **Blind Bay**. We'll meet the locals and hear the stories at community spots such as **Tryphena Wharf**, **Shoal Bay Estate**, **The Barrier Social Club** and **Jacque's Haven** and **My Fat Puku Cafe**.

We'll take a cruise aboard the launch '**Sundancer**' up the island's west coast past old Kauri sawmills and deserted whaling stations, then head through the spectacular **Broken Isles** and **Man-O'-War Passage**. At **Port Fitzroy** we'll disembark and visit the amazing **Glenfern Sanctuary**, a predator-free forest, where we'll be guided around their native plant and bird reintroduction facilities and up to **Sunset Rock** for jaw-dropping panoramic views of **Port Fitzroy Harbour** itself.



How about a walk along a gentle forest track bound by ancient **Nikau Palms** to **Hot Springs** for a soak? Visit **Okupu Beach** to see some truly ancient Pohutakawa trees and take a look around an organic farm known as **Okiwi Passion**. Sharing a meal with friends is an occasion to be revered and enjoyed on 'the Barrier' too. Orla at **Currach Irish Pub** and Steve at **Mulberry Grove Store & Café** are examples of locals whose larger-than-life personalities are reflected in their hospitality. All this whilst staying at Leigh's own **Sunset Waterfront Lodge**, just a few metres from the water's edge in Shoal Bay.

For many, a trip to **Great Barrier Island** is a 'bucket-list' item. The opportunity to visit this iconic maritime region of New Zealand is rare. This is the chance you've been waiting for, encompassing all the levels of Bay Tours service you've come to expect.

Join us for an unforgettable odyssey around this island wonderland.



## Tour No. 33126 Tuesday Temptations

Date	Tuesday 31 <sup>st</sup> March
Times	All collected by 9.20am
Cost	Patron: \$145.00 Member: \$165.00
Payment	Full payment upon booking please
Price includes	Door to door transport, morning tea, lunch



Spend a deliciously relaxing day indulging in some of Hawke's Bay's most loved local gems, from scones and figs to blueberries and beautiful views.

We begin the day with morning tea at **Birdwoods Gallery & Café**, where freshly baked sweet and savoury scones, English breakfast tea, and Hawthorne coffee await in charming surroundings. Next, we visit **Te Mata Figs** outside Havelock North for an insightful talk and browse, discovering the story behind their award-

winning products.

From there, we head to the tranquil gardens of **Cornwall Park** in Hastings for a relaxed picnic lunch. then top off our afternoon with a sweet treat and behind-the-scenes tour at **Bay Blueberries**, where their gelato and sorbet are as fresh as the fruit they grow.

A delightful Tuesday filled with local flavour and good company – the perfect way to enjoy the best of our own backyard.

## Tour No. 40826 Back Country Stations

Date	Wednesday 8 <sup>th</sup> – Saturday 11 <sup>th</sup> April
Times	All collected by 8.15am
Cost	Patron: \$1,685.00 Twin Share   \$2,210.00 Single Room Member: \$1,855.00 Twin Share   \$2,435.00 Single Room
Payment	\$500.00 upon booking, balance due Tuesday 17 <sup>th</sup> February
Price includes	Door to door transport, accommodation x3, morning tea x2, lunch x3, dinner x3

Following the popularity of our initial tour visiting farming enterprises around the Gisborne district in early 2022, we're very pleased to introduce an updated encore adventure. Since the 1880s the hill country around Gisborne has been home to some of the most successful and innovative rural enterprises in the country. All manner of both agriculture and horticulture have thrived in this part of the East Coast at one time or another.



Hawke's Bay farming dynasties have had numerous familial connections to the Gisborne area, so we're delighted to pay a few of these places a return visit AND introduce some

farming operations we're visiting for the first time. Over **4 days** we'll visit a variety of rural enterprises who are, like so many farms today, recognizing changing customer needs and diversifying their offerings. Here's a summary of the planned itinerary;

**Day 1:** After driving north and stopping for morning tea at **Gemmell's** shiny new café in Wairoa, our first farm visit takes us up onto the plateau at the southern end of the Mahia Peninsula. **Onenui Station** occupies just over 8,200 acres on the triangular southern tip of the peninsula and farms both cattle and sheep. Since the 1950's, when the farm was only accessible every 12 hours with the tide, Onenui Station has been owned and managed by **Tawapata South**, an incorporated iwi entity that also owns the land operated by Rocket Lab at the very tip of the peninsula. We'll learn about this award-winning farming operation and also enjoy lunch here. After our visit we carry on to **Gisborne** and the fabulous **Portside Hotel**, our home for the next 3 nights.



**Day 2:** This morning we visit **Waipura Station** which ranges over 2,100 acres on the steep hills just out of Gisborne. After morning tea and a chat in the woolshed with the Foster family we'll head out in time to catch the shepherds in action with their dogs. A glorious lunch is in store at the beautiful **Bushmere Arms** before we head to our final destination of the day, **Turihaua Angus Stud**, the oldest Angus stud farm in Australasia. Established by J.N. Williams (of Frimley orchard fame) in 1897, Turihaua remains in the Williams family to this day. The family will show us around their operation and talk about the extensive history of Turihaua and the Williams name.

**Day 3:** Today begins in the Rere District west of Gisborne and another internationally acclaimed Angus stud, **Tangihau Station**. Since its establishment over 70 years ago, the station has had only 3 managers and is owned by East Coast farming royalty, the Bayly family. This is our first visit to the property, and we'll have morning tea with the current Station Manager, Dean McHardy, who has run the property for more than 30 years, and learn why the sale prices of **Tangihau Angus** bulls are often the highest in Australasia. We'll also be shown around their recently completed complex for their own on-farm bull auctions. No trip into this area would be complete without a visit to the splendid **Rere Falls**. We have lunch at **Eastwoodhill Arboretum** and enjoy a tour of this national woodland treasure by jeep in the afternoon.

**Day 4:** Today is Saturday and that means our first stop of the day **MUST** be the **Gisborne Farmer's Market**. Then we're off for another first-time visit. **Pihitia Station** is a 2,500 acre coastal hill country sheep breeding & finishing station that has also been in the same Williams family as Turihaua



since 1896. Toby Williams is the 5<sup>th</sup> generation to run the property. Toby is also Chair of Federated Farmers Meat & Wool Council and a passionate advocate for NZ wool. He'll show us around and tell us about coastal hill farming. We'll enjoy lunch on Gisborne's beautiful **Waikanae Beach** before we begin our homeward journey back to the Bay.

It's always a privilege to gain access to, and be shown around, private farming concerns and to listen to the people responsible for growing and maintaining them. Prepare to hear some remarkable stories of international success amid all the familiar farming challenges. Places are limited so book early for this remarkable tour.

## Tour No. 42726

### Molesworth & Rainbow Stations & More

Date	Monday 27 <sup>th</sup> April – Friday 1 <sup>st</sup> May
Times	All collected by 8am
Cost	Patron: \$3,675.00 Twin Share   \$4,275.00 Single Room Member: \$4,015.00 Twin Share   \$4,725.00 Single Room
Payment	\$800.00 upon booking, balance due Monday 2 <sup>nd</sup> March
Price includes	Door to door transport, accommodation x4, breakfast x4, morning tea x4, lunch x3, dinner x4, flights



This classic tour has become a Bay Tours institution. Journey through the vast backcountry of New Zealand's largest farm—**Molesworth Station**—and neighbouring **Rainbow Station**. These two giants of the South Island offer rugged landscapes, alpine lakes, and fascinating glimpses into Kiwi farming life. Based in the charming alpine village of **Hanmer Springs**, you'll enjoy the perfect mix of adventure and relaxation.

**Day 1:** Fly from Hawke's Bay to **Christchurch**, where our long-time local guide, Ross Carter of Molesworth Tours, greets us. With 40 years' experience and a decade of guiding Bay Tours groups, Ross takes us north to **Woodchester Station**. Hosted by the Kelly family, we witness firsthand the lasting impact of the Kaikōura earthquake. In the afternoon, we arrive at **Drifter's Inn**, our welcoming **Hanmer Springs** base for the next four nights.

**Day 2:** We explore **Molesworth Station** by 4WD, travelling through the Clarence Valley, over **Jack's Pass**, and visiting landmarks like the **Acheron Accommodation House** and **Isolated Flat**. With sweeping views, riverbeds dotted with cattle, geese, and paradise ducks, and cob homesteads, the scale and raw beauty of the station is unforgettable.

**Day 3:** Enjoy a **FREE DAY** in Hanmer Springs. Relax in the famous thermal pools, take a bush walk, or explore the historic Queen Mary Hospital grounds. We regroup for a shared dinner tonight.

**Day 4:** Another 4WD adventure, this time through the stunning **Rainbow Station**. We journey past **Lake Tennyson** and over **Island Pass**—the country's highest—taking in spectacular views and diverse terrain. Rainbow's 20,500 acres are rich in natural contrast, with its blend of sheep, cattle, rivers, and forested ridges.

**Day 5:** We return to Christchurch, stopping en route at the **Iron Ridge Sculpture Park**, a unique art experience in a former quarry. After a late lunch, we fly back to Hawke's Bay.



These iconic stations are steeped in the spirit of the land—of shepherds, stockmen, and wide-open skies. This is a rare opportunity to see a remote and authentic slice of New Zealand life. **Spaces are limited—book now to avoid disappointment.**





# Fully Booked – Waitlist Open

The following tours have proven incredibly popular and are now fully booked. However, don't worry – we are holding waitlists for each in case of cancellations. If you'd like to add your name to a waitlist, just get in touch and we'll let you know if a spot opens.

## **Tour No. 72825 – The Book of Mormon – Sydney**

A hit Broadway musical and a whirlwind Sydney escape! With flights, accommodation, and premium seats to this outrageous comedy, it's no wonder it filled fast.

## **Tour No. 81625 – Mamma Mia Musical – Wellington**

ABBA's infectious hits, sparkling costumes and feel-good fun – this Wellington weekend of music, laughter and memories is a guaranteed crowd-pleaser.

## **Tour No. 103025 – Cirque du Soleil: Corteo – Auckland**

A magical world of acrobatics, comedy and theatrical wonder. Cirque's return to New Zealand always causes a stir, and this Auckland overnight has sold out.

## **Tour No. 111325 – The Ghan, Darwin & Adelaide**

One of the world's great rail journeys. This exclusive 13-day Australian adventure from the Top End to the southern coast is a dream come true – and already full.

## **Tour No. 111725 – An Evening with Cliff Richard – Wellington**

A nostalgic night with a true music legend. This overnight to see Cliff Richard live in concert has struck a chord with fans – all seats are currently filled.

## **Tour No. 12926 – Chef's Table at Blue Duck Station**

An unforgettable food and farm experience in the remote wilderness of Blue Duck Station. With luxury dining and exclusive access, this culinary escape is now full



## Kerren's Whisper

We're talking with the Environment, Conservation & Outdoor Education Trust – who run the **Kiwi Creche** at **Lake Opouahi** – about the return of our group visits in **February 2026**. The predator-free area suffered a lot of damage in Cyclone Gabrielle and it's great to see the Kiwi chick & juvenile population increasing again. Put your name o

In **October 2026** we'll see the long-awaited return of our tour to South Australia to cruise the **Murray River**. But this time we've also added a stay in the brand new **Monarto Safari Resort**, right in the middle of the world's largest open-range safari park outside Africa. We'll experience sunset and dawn game drives here, just as you would on safari in Kenya or Botswana. AND, as if that isn't enough, we'll also be including the luxurious **Indian Pacific** train from Adelaide to Sydney on the way home. Wow! What an experience that tour is going to be. **Those on our existing Interest List for Murray River will be contacted first, once details are finalized. If you would like to add your name to this list, please contact our office.**

In **November 2026** Ken and I will lead a tour to the Land of the Rising Sun – **Japan**. Back in March we visited Japan with an eye to a group tour there. It was an incredible experience and we're keen to incorporate much of what we did into an appropriate itinerary, which we're working on at the moment. The tour will include both a cruise (with group shore excursions organized to include the best of what we visited in some of the ports) and a land-based segment as well. **If you would like to register your interest in a tour to Japan, please contact our office.**



**All Post to:**  
**PO Box 12221**  
Ahuriri, Napier 4144

**Unsubscribe: If you no longer wish to receive this Leisure Guide  
Please contact us and we will remove you from our database.  
Ph: (06) 845 2736 EXT 1 for Tour Club or Email your  
Tour Club Co-ordinator Kayley at [tourclub@baytours.co.nz](mailto:tourclub@baytours.co.nz)**

**THE NEXT LEISURE GUIDE WILL BE RELEASED IN DECEMBER**

**🚗 Share the Joy of Touring – Invite a Friend to the Tour Club!**

Do you know someone who would love exploring Aotearoa with friendly people and great experiences? Use the vouchers below to invite them to join the Bay Tours **Tour Club**!

🎁 **They'll get \$50 or \$100 off their first tour**

💰 **You'll get \$50 or \$100 credit** once they've travelled

*(Amount depends on whether their first tour is a day trip or overnight/longer.)*

To use a voucher, simply:

1. Write your name on the 'Referred by' line.
2. Hand the voucher to your friend or family member.
3. They contact Bay Tours to join and if they're ready, book their first trip.

✂️ **Tear off a voucher and pass it on – easy!**

**🚗 Bay Tours Tour Club Referral Voucher**

You've been referred to Bay Tours!

Get \$50–\$100 off your first tour when you sign up and mention your friend's name below:

Referred by: \_\_\_\_\_

📞 Contact us to join and book: 06 845 2736 EXT 1

✉️ [tourclub@baytours.co.nz](mailto:tourclub@baytours.co.nz)

🌐 [www.seniorguidedtours.co.nz](http://www.seniorguidedtours.co.nz)

**🚗 Bay Tours Tour Club Referral Voucher**

You've been referred to Bay Tours!

Get \$50–\$100 off your first tour when you sign up and mention your friend's name below:

Referred by: \_\_\_\_\_

📞 Contact us to join and book: 06 845 2736 EXT 1

✉️ [tourclub@baytours.co.nz](mailto:tourclub@baytours.co.nz)

🌐 [www.seniorguidedtours.co.nz](http://www.seniorguidedtours.co.nz)

**🚗 Bay Tours Tour Club Referral Voucher**

You've been referred to Bay Tours!

Get \$50–\$100 off your first tour when you sign up and mention your friend's name below:

Referred by: \_\_\_\_\_

📞 Contact us to join and book: 06 845 2736 EXT 1

✉️ [tourclub@baytours.co.nz](mailto:tourclub@baytours.co.nz)

🌐 [www.seniorguidedtours.co.nz](http://www.seniorguidedtours.co.nz)

**🚗 Bay Tours Tour Club Referral Voucher**

You've been referred to Bay Tours!

Get \$50–\$100 off your first tour when you sign up and mention your friend's name below:

Referred by: \_\_\_\_\_

📞 Contact us to join and book: 06 845 2736 EXT 1

✉️ [tourclub@baytours.co.nz](mailto:tourclub@baytours.co.nz)

🌐 [www.seniorguidedtours.co.nz](http://www.seniorguidedtours.co.nz)